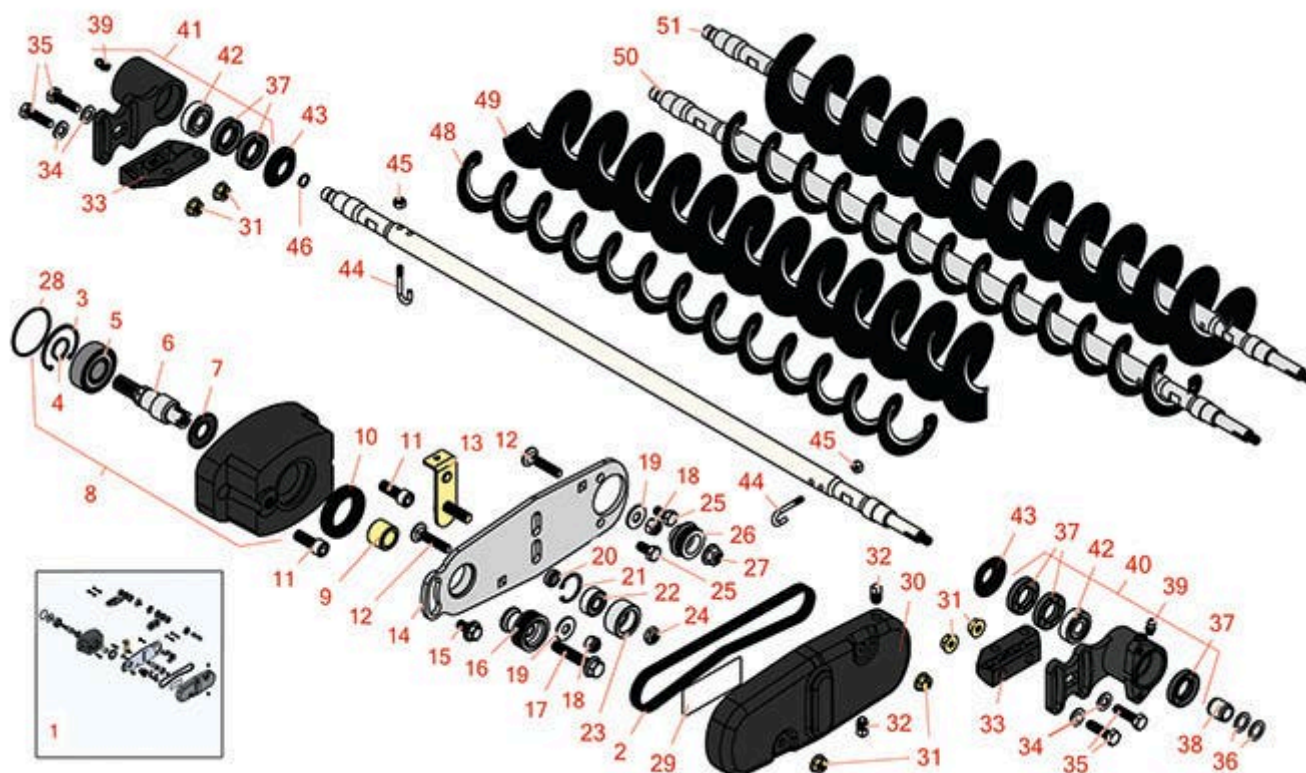




Replaces R&R Products Reel Max 544D

Parts

Cutting Unit
Rear Brush



All original equipment manufacturers names and part numbers are used for identification purposes only, and we are in no way implying that our products are original equipment parts. Prices subject to change without notice.



Replaces R&R Products Reel Max 544D

Parts

Cutting Unit
Rear Brush



Item No	R&R Part No.	OEM Part No.	Description	Qty Req	Order Quantity
---------	--------------	--------------	-------------	---------	----------------

Complete Roller Brush Kits

1	R150906		Brush Kit - Rear Roller - Less Brush	1	
---	----------------	--	--------------------------------------	---	--

Tech Note: R150915 or R150916 must also be added:

Belts

2	R110-1746	R150621	Belt - Brush	1	
---	------------------	---------	--------------	---	--

Other Parts Available

3	R32120-62	32120-62	Ring - Retaining	1	
---	------------------	----------	------------------	---	--

4	R458013	R30-0580, R32120-72, R93-2525, R936125	Ring - Retaining	1	
---	----------------	-------------------------------------------------	------------------	---	--

5	R93-2559	R204-060, RTC23201	Bearing	1	
---	-----------------	-----------------------	---------	---	--

6	R107-7796		Shaft - Drive	1	
---	------------------	--	---------------	---	--

7	R107-7795		Seal - Oil	1	
---	------------------	--	------------	---	--

8	R108-4200	R108-4197	Bearing Housing Assy	1	
---	------------------	-----------	----------------------	---	--

9	R108-4477		Spacer	1	
---	------------------	--	--------	---	--

10	R240-7		Grommet - Rubber - 2 in OD	1	
----	---------------	--	----------------------------	---	--

11	R3274-7		Bolt - Soc HD Cap 3/8-16 x 1	2	
----	----------------	--	------------------------------	---	--

12	R112-6950	R3230-27	Bolt - Carriage 5/16-18 x 1-1/2	2	
----	------------------	----------	---------------------------------	---	--

13	R108-4478		Plate - Idler	1	
----	------------------	--	---------------	---	--

14	R108-4176		Plate-Brush	1	
----	------------------	--	-------------	---	--

15	R27-0411		Bolt - Shoulder	1	
----	-----------------	--	-----------------	---	--

16	R110-1741		Pulley - Driver	1	
----	------------------	--	-----------------	---	--

All original equipment manufacturers names and part numbers are used for identification purposes only, and we are in no way implying that our products are original equipment parts. Prices subject to change without notice.



Replaces R&R Products Reel Max 544D

Parts

Cutting Unit
Rear Brush



Item No	R&R Part No.	OEM Part No.	Description	Qty Req	Order Quantity
17	R66-9302	R3234-20	Screw - HHF, Whiz	1	
18	R3296-47		Locknut - 5/16-18 Jam Nyloc	2	
19	R453009	3256-3, R01-166-0400, R24-10-BD, R24-9-AD, R24H1136, R32-9650, R3256-2, R3256-23, R3256-67, R3290-217, R3556-3, R4-2390, R452006, R7-0152	Washer - Flat 5/16 SAE	2	
20	R93-3658		Spacer - Hardened	1	
21	R32151-60		Ring - Snap	1	
22	R110-1701		Bearing	1	
23	R110-1745		Bearing Assy - Idler	1	
24	R3296-59		Locknut - 3/8-16 Nylon Jam	1	
25	R322-2	R513338P	Bolt - Hex HD 5/16-18 x 5/8	2	
26	R110-1743		Pulley - Driven - Keyed	1	
<i>Tech Note: (2007 & Prior):</i>					
27	R104-8301	R109-6658, R133-7570	Locknut - 3/8-16 Nylon Flanged	1	
28	R112-6968		O-Ring	1	
29	R110-1734		Decal-Belt Tension	1	
30	R112-6951		Cover - Belt	1	

All original equipment manufacturers names and part numbers are used for identification purposes only, and we are in no way implying that our products are original equipment parts. Prices subject to change without notice.



Replaces R&R Products Reel Max 544D

Parts

Cutting Unit
Rear Brush



Item No	R&R Part No.	OEM Part No.	Description	Qty Req	Order Quantity
31	R104-8300	R119-4041	Locknut - 5/16-18 Flanged Y/Zinc	6	
32	R285-17	R285-10	Plug - 1/8 NPT	2	
33	R108-4480		Bracket - Rear Roller Brush	2	
34	R94-6936		Washer - Hardened - 5/16 SAE	4	
35	R322-16	R4-4200	Bolt - Hex HD 5/16-18 x 1-1/8	4	
36	R112-6957		Washer - Hardened	2	
37	R106-8530		Seal - Oil	5	
38	R108-4491		Spacer - Hardened	1	
39	R302-5	R173-0, R21-6010, R255825, R302-37, R302-47, R302-57, R302-58, R302-6, R31-0300, R32-9660, R471214, R471223, R471226, R60-0800, R62-3880, R92-4181, RJD7797, RJD7842, RJD7844, RM0004, RZS48114-04	Fitting - Grease	2	
40	R108-4206		Bearing Housing Assy - Driven	1	
41	R108-4207		Bearing Housing Assy - Non Driven	1	
42	R95-0707		Bearing - Self Aligning	2	
43	R108-4172		Seal - Excluder	2	

All original equipment manufacturers names and part numbers are used for identification purposes only, and we are in no way implying that our products are original equipment parts. Prices subject to change without notice.



Replaces R&R Products Reel Max 544D

Parts

*Cutting Unit
Rear Brush*



Item No	R&R Part No.	OEM Part No.	Description	Qty Req	Order Quantity
44	R105-9632		Bolt - J	2	
45	R3296-2	R32127-10, R9157404	Nut - #10 Lock	2	
46	R237-22	R107-8844, R232-72, R237-78	O-Ring	1	
48	R108-4193		Brush - Roller - 2 OD	1	
49	R110-1740		Brush-Roller (High HOC) 3.5 in OD	1	
50	R150915	R108-4190	Shaft Assy - Rear Roller Brush - 2 in Keyed	1	
51	R150916		Shaft Assy - Rear Roller Brush 3.5 in - Keyed	1	

All original equipment manufacturers names and part numbers are used for identification purposes only, and we are in no way implying that our products are original equipment parts. Prices subject to change without notice.