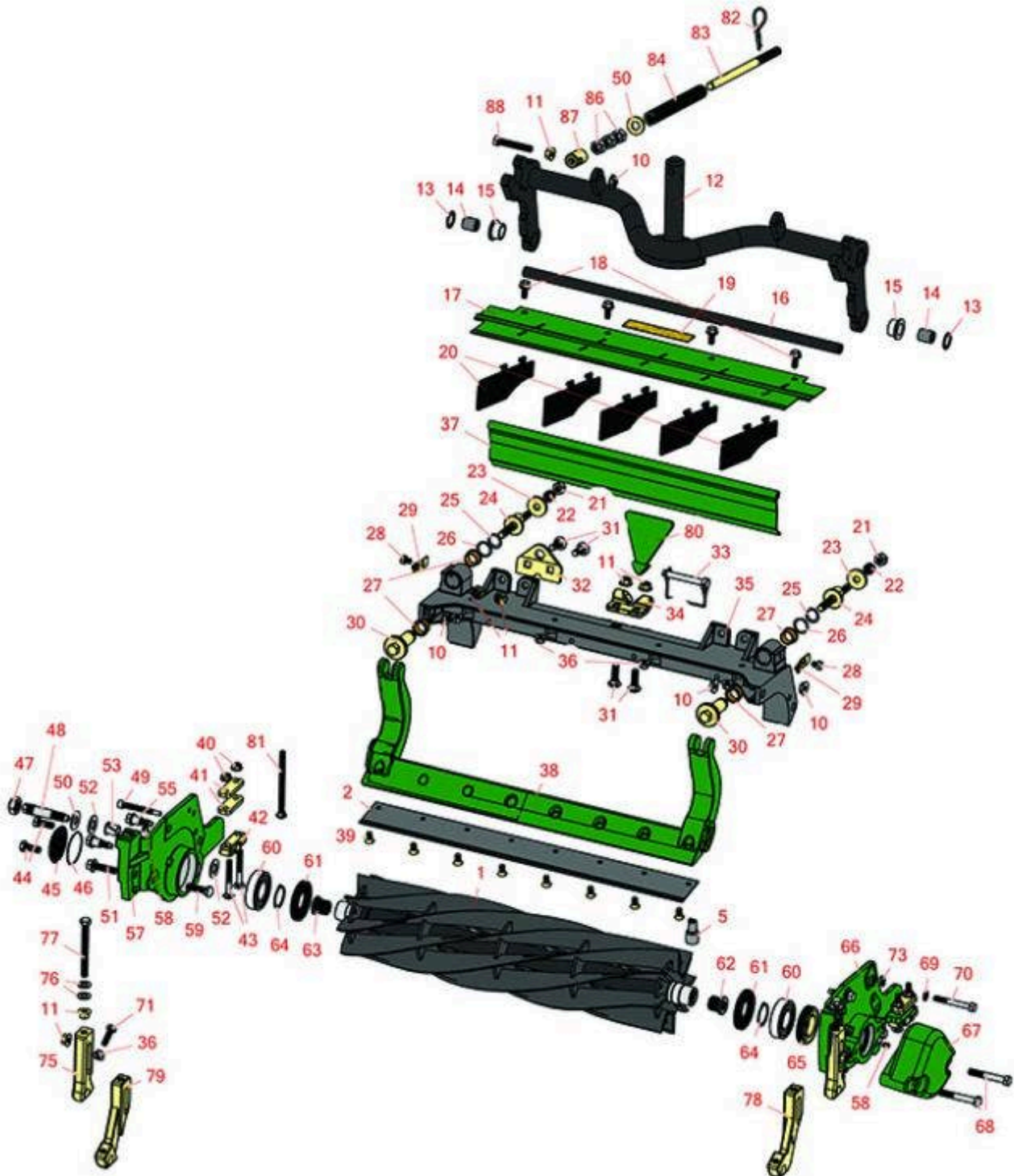




Replaces R&R Products Reel Max 544D

Parts

Cutting Unit
Reel & Bedknife



All original equipment manufacturers names and part numbers are used for identification purposes only, and we are in no way implying that our products are original equipment parts. Prices subject to change without notice.



Replaces R&R Products Reel Max 544D

Parts

Cutting Unit
Reel & Bedknife



Item No	R&R Part No.	OEM Part No.	Description	Qty Req	Order Quantity
---------	--------------	--------------	-------------	---------	----------------

R&R Reels, Lifetime Guaranteed

1	R108-9070		Reel - 5 Blade 22x5	1	
---	------------------	--	---------------------	---	--

Detail Description: R&R Reel blades are manufactured from high carbon-boron alloy steel and then hardened to RC46-49 to match the temper of our bedknives and original equipment bedknives. All R&R Reels are cylindrically ground on bearing surfaces and then relief ground. Reels are then precision computer balanced for extended bearing and reel life. R&R Products Reels are guaranteed against defects in material and workmanship for the life of the reel under normal use.:

1	R108-9071		Reel - 8 Blade 22x5	1	
---	------------------	--	---------------------	---	--

Detail Description: R&R Reel blades are manufactured from high carbon-boron alloy steel and then hardened to RC46-49 to match the temper of our bedknives and original equipment bedknives. All R&R Reels are cylindrically ground on bearing surfaces and then relief ground. Reels are then precision computer balanced for extended bearing and reel life. R&R Products Reels are guaranteed against defects in material and workmanship for the life of the reel under normal use.:

R&R Bedknives, Lifetime Guaranteed

2	R110-4084		Bedknife - Low Cut	1	
---	------------------	--	--------------------	---	--

Detail Description: R&R Bedknives are manufactured from high carbon-boron alloy steel and then hardened to RC46-49 to match the temper of our reel blades and original equipment reels. Bedknives are surface ground on the top and front edge and straightened three times before being packaged with oil for rust prevention. All R&R Bedknives now have an increased front edge grind for added life. All R&R Bedknives are guaranteed against defects in material and workmanship under normal use for the life of the part.:

2	R108-9096		Bedknife - Standard	1	
---	------------------	--	---------------------	---	--

Detail Description: R&R Bedknives are manufactured from high carbon-boron alloy steel and then hardened to RC46-49 to match the temper of our reel blades and original equipment reels. Bedknives are surface ground on the top and front edge and straightened three times before being packaged with oil for rust prevention. All R&R Bedknives now have an increased front edge grind for added life. All R&R Bedknives are guaranteed against defects in material and workmanship under normal use for the life of the part.:

2	R110-4074		Bedknife - High Cut	1	
---	------------------	--	---------------------	---	--

All original equipment manufacturers names and part numbers are used for identification purposes only, and we are in no way implying that our products are original equipment parts. Prices subject to change without notice.



Replaces R&R Products Reel Max 544D

Parts

Cutting Unit
Reel & Bedknife



Item No	R&R Part No.	OEM Part No.	Description	Qty Req	Order Quantity
---------	--------------	--------------	-------------	---------	----------------

Detail Description: R&R Bedknives are manufactured from high carbon-boron alloy steel and then hardened to RC46-49 to match the temper of our reel blades and original equipment reels. Bedknives are surface ground on the top and front edge and straightened three times before being packaged with oil for rust prevention. All R&R Bedknives now have an increased front edge grind for added life. All R&R Bedknives are guaranteed against defects in material and workmanship under normal use for the life of the part.:

R&R Razor Tool Steel Bedknives, Lifetime Guaranteed

2	R108-9095	R137-0833	Bedknife - Razor Tool Steel - 22 High Cut	1
---	------------------	-----------	---	---

Detail Description: R&R Razor bedknives are manufactured from premium alloy tool steel steel and then hardened to RC48-51 to match the temper of our Razor reel blades and original equipment premium series reels. Bedknives are surface ground on the top and front edge and specially packaged for rust prevention. All R&R Bedknives now have an increased front edge grind for added life. All R&R Bedknives are guaranteed against defects in material and workmanship under normal use for the life of the part. You can expect up to double the life over standard bedknives.:

Service Tools

5	R51-0880		Bedknife Screw Driver Tool	0
---	-----------------	--	----------------------------	---

Detail Description: Easily install and remove bed knife screws with the help of a ratchet with 3/8" drive. Tool manufactured with hardened alloy steel.:

Other Parts Available

10	R32128-43	R30-8990, R3290-357	Nut - Flanged Whiz - 3/8-16	5
11	R32128-19		Locknut - 3/8-16 Flanged Top Lock	5
12	R106-3937		Carrier Frame Assy	1
13	R67-9410		Washer - Clevis Pin	1
14	R108-4279		Spacer - Frame	2
15	R93-2877		Bushing - Flanged	2
16	R108-4284		Shaft - Support	1

All original equipment manufacturers names and part numbers are used for identification purposes only, and we are in no way implying that our products are original equipment parts. Prices subject to change without notice.



Replaces R&R Products Reel Max 544D

Parts

*Cutting Unit
Reel & Bedknife*



Item No	R&R Part No.	OEM Part No.	Description	Qty Req	Order Quantity
17	R107-2996G		Grass Shield - Front - Green	1	
18	R3234-5	R62-3310	Bolt - 5/16-18x3/4 Hx Ser Was HD	4	
19	R93-6688		Decal - Warning	1	
20	R110-1706		Deflector	5	
21	R33025-00		Locknut - 10mm x 1.5 Jam	2	
22	R99-3755		Spring - Bed Bar Adjusting	2	
23	R99-2098		Washer - Bed Bar Adjuster	2	
24	R99-2096		Screw - Bed Bar Adjustment - M10 Thrd 1 End	2	
25	R32120-93		Snap Ring - HD	2	
26	R106-5335		Wave Washer - Reel Adjusting	2	
27	R106-5344		Bushing - Flanged and Keyed	4	
28	R114-9396	R119-4067	Bolt - Hex HD 5/16-18 x 3/8	2	
29	R99-2097		Detent - Bed Bar Adjuster	2	
30	R106-5363		Shaft - Adjusting - Bed Bar - Stainless	2	
31	R3231-25	R01-173-0610, R30-9970, R3231-3, R900064P	Bolt - Carriage 3/8-16 x 1-1/4	4	
32	R110-4069		Bracket	1	
33	R107-7400		Pin - Lynch	1	
34	R110-4058		Bracket - Chain	1	
35	R107-2951		Frame	1	

All original equipment manufacturers names and part numbers are used for identification purposes only, and we are in no way implying that our products are original equipment parts. Prices subject to change without notice.



Replaces R&R Products Reel Max 544D

Parts

*Cutting Unit
Reel & Bedknife*



Item No	R&R Part No.	OEM Part No.	Description	Qty Req	Order Quantity
36	R445722	R30-8980, R32128-2, R32128-20	Nut - Serrated Washer	4	
37	R107-7777G		Grass Shield Assy - Rear - Green	1	
38	R150905		Bed Bar - Fits R&R Units Only	1	
39	R150476	R170476, R3-3816, R52-4910, R57-4910	Screw - Bedknife 5/16-18 x 5/8	8	
40	R104-8300	R119-4041	Locknut - 5/16-18 Flanged Y/Zinc	4	
41	R106-3925		Shim - 1/4 - Rear Roller HOC	8	
42	R106-3924		Bracket - Rear Roller	2	
43	RP17609-2	R441672	Bolt - Carriage 5/16-18 x 1-1/2	4	
44	R3234-11		Bolt - Hex Washer HD	2	
45	R150485	R2410-30	Cap - Protective Bearing Housing	1	
46	R237-68		O-Ring	2	
47	R3296-33	R444820, R445801	Locknut - 5/8-18 ESNA Jam	2	
48	R106-9623		Bolt - Bedbar	2	
49	R107-7773		Bolt - Soc HD Cap 5/16-18 x 2-1/2	1	

All original equipment manufacturers names and part numbers are used for identification purposes only, and we are in no way implying that our products are original equipment parts. Prices subject to change without notice.



Replaces R&R Products Reel Max 544D

Parts

Cutting Unit
Reel & Bedknife



Item No	R&R Part No.	OEM Part No.	Description	Qty Req	Order Quantity
50	R453017	3256-26, R01-166-0050, R01-166-0240, R01-166-0800, R24-13-AD, R24-14-AD, R32-8110, R3256-6, R452012, R69-8980	Washer - Flat 1/2	2	
51	R3234-19		Bolt - Hex Washer 3/8-16x1-3/4	2	
52	R61-1950		Washer - Nylon - Bed Bar	4	
53	R56-9520		Bushing - Nyliner	2	
55	R107-2979		Bolt - Shoulder	4	
57	R150901G		Side Plate - RH - Frame - Green	1	
58	R302-5	R173-0, R21-6010, R255825, R302-37, R302-47, R302-57, R302-58, R302-6, R31-0300, R32-9660, R471214, R471223, R471226, R60-0800, R62-3880, R92-4181, RJD7797, RJD7842, RJD7844, RM0004, RZS48114-04	Fitting - Grease	2	
59	R3231-4	R01-157-0440, R01-173-0612	Bolt - Carriage 3/8-16 x 1-1/2	2	

All original equipment manufacturers names and part numbers are used for identification purposes only, and we are in no way implying that our products are original equipment parts. Prices subject to change without notice.



Replaces R&R Products Reel Max 544D

Parts

Cutting Unit
Reel & Bedknife



Item No	R&R Part No.	OEM Part No.	Description	Qty Req	Order Quantity
60	R93-2489		Bearing - Reel	2	
61	R107-4028	R105-6757	Seal - Grease	2	
62	R105-8075		Insert - Threaded - RH - 8 Tooth	1	
63	R105-8076		Insert - Threaded - LH - 8 Tooth	1	
64	R92-2601		Snap Ring	2	
65	R107-2954		Nut - Bearing Adjuster	1	
66	R150900G		Side Plate - LH - Frame - Green	1	
67	R108-9090G		Weight - Green	1	
68	R101526	321-11, R01-150-0970, R01-178-0620, R20-53-AGD, R3224-8, R323-12, R323-31, R323-47	Bolt - Hex HD 3/8-16 x 2-1/2 GR5	2	
69	R3256-74		Washer - Flat	1	
70	R322-14	R01-150-0830, R01-178-0524, R30-8900	Bolt - Hex HD 5/16-18 x 3 GR5	1	
71	R322-16	R4-4200	Bolt - Hex HD 5/16-18 x 1-1/8	2	
73	R106-4214		Set Screw - 1/4-20 x 1/2 Cone Point	1	
75	R107-2952		Bracket - Front Roller	2	

All original equipment manufacturers names and part numbers are used for identification purposes only, and we are in no way implying that our products are original equipment parts. Prices subject to change without notice.



Replaces R&R Products Reel Max 544D

Parts

Cutting Unit
Reel & Bedknife



Item No	R&R Part No.	OEM Part No.	Description	Qty Req	Order Quantity
76	R453011	3256-24, 453011, R01-166-0100, R01-166-0120, R01-166-0270, R01-166-0500, R01-166-0600, R01-166-0620, R132-4593, R237-12, R24-10-AD, R24-11-AD, R24-11-BD, R24-12-AD, R24-12-BD, R30-9310, R32-8190, R3256-24, R3256-3, R3256-36, R3256-4, R47-9950	Washer - Flat 3/8 SAE Y/Zinc	4	
77	R107-4026		Bolt - Hex Tap 3/8-16 x 3-3/4	2	
78	R108-4213		Bracket- HOC - LH - Groomer	1	
79	R108-4214		Bracket-HOC - RH - Groomer	1	
80	R110-4088-03	R119-8010-03	Kickstand	1	
81	R3230-30		Bolt - Carriage 5/16x4 1/2	4	
82	R92-2762		Pin - Snap	1	
83	R107-2970		Rod - Spring	1	
84	R108-9084		Spring	1	
86	R443818	R01-191-0813, R3218-18, R3218-5	Nut - 1/2-13 Hex Jam Zinc	3	
87	R99-8662		Tube - Spring	1	

All original equipment manufacturers names and part numbers are used for identification purposes only, and we are in no way implying that our products are original equipment parts. Prices subject to change without notice.



Replaces R&R Products Reel Max 544D

Parts

Cutting Unit
Reel & Bedknife



Item No	R&R Part No.	OEM Part No.	Description	Qty Req	Order Quantity
88	R104-3396		Bolt - Hex HD 3/8-16 x 2-1/4	1	

All original equipment manufacturers names and part numbers are used for identification purposes only, and we are in no way implying that our products are original equipment parts. Prices subject to change without notice.