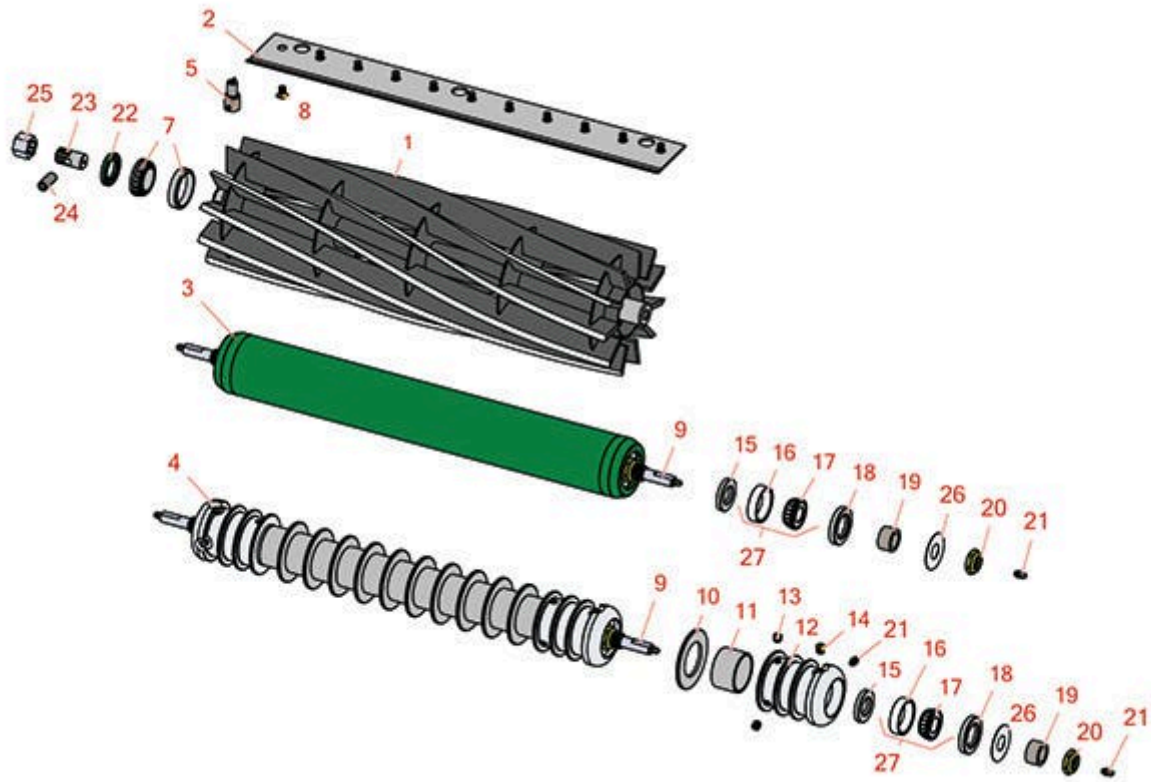




Replaces Ransomes 250 Parts

Cutting Unit
Reel & Bedknife



All original equipment manufacturers names and part numbers are used for identification purposes only, and we are in no way implying that our products are original equipment parts. Prices subject to change without notice.



Replaces Ransomes 250 Parts

Cutting Unit
Reel & Bedknife



Item No	R&R Part No.	OEM Part No.	Description	Qty Req	Order Quantity
---------	--------------	--------------	-------------	---------	----------------

1	R4113568	2206002, 4113568	Reel - 11 Blade w/Coupling	1	
---	-----------------	---------------------	----------------------------	---	--

***Detail Description:** R&R Reel blades are expertly crafted from premium high carbon-boron alloy steel, heat-treated to perfectly complement both R&R and OEM bedknives. Each reel undergoes precision cylindrical grinding on bearing surfaces, followed by relief grinding for optimal performance. Advanced computer balancing ensures extended reel and bearing life. Backed by our lifetime guarantee against defects in materials and craftsmanship under normal use, R&R Reels deliver unmatched durability and cutting precision you can trust.:*

1	R2206047	2206047	Reel - 7 Blade	1	
---	-----------------	---------	----------------	---	--

***Detail Description:** R&R Reel blades are expertly crafted from premium high carbon-boron alloy steel, heat-treated to perfectly complement both R&R and OEM bedknives. Each reel undergoes precision cylindrical grinding on bearing surfaces, followed by relief grinding for optimal performance. Advanced computer balancing ensures extended reel and bearing life. Backed by our lifetime guarantee against defects in materials and craftsmanship under normal use, R&R Reels deliver unmatched durability and cutting precision you can trust.:*

R&R Bedknives, Lifetime Guaranteed

2	R2202002	2202002	Bedknife - Thin 5mm	1	
---	-----------------	---------	---------------------	---	--

***Detail Description:** R&R Bedknives are manufactured from high carbon-boron alloy steel and then hardened to RC46-49 to match the temper of our reel blades and original equipment reels. Bedknives are surface ground on the top and front edge and straightened three times before being packaged with oil for rust prevention. All R&R Bedknives now have an increased front edge grind for added life. All R&R Bedknives are guaranteed against defects in material and workmanship under normal use for the life of the part.:*

2	R2202167	2202167	Bedknife - Thick 5/16	1	
---	-----------------	---------	-----------------------	---	--

***Detail Description:** R&R Bedknives are manufactured from high carbon-boron alloy steel and then hardened to RC46-49 to match the temper of our reel blades and original equipment reels. Bedknives are surface ground on the top and front edge and straightened three times before being packaged with oil for rust prevention. All R&R Bedknives now have an increased front edge grind for added life. All R&R Bedknives are guaranteed against defects in material and workmanship under normal use for the life of the part.:*

R&R Rollers

3	R170505	2206099	Roller - Smooth Tubular Steel	1	
---	----------------	---------	-------------------------------	---	--

***Detail Description:** Constructed with a through shaft, this heavy duty roller uses greasable tapered bearings for extended life.:*

All original equipment manufacturers names and part numbers are used for identification purposes only, and we are in no way implying that our products are original equipment parts. Prices subject to change without notice.



Replaces Ransomes 250 Parts

Cutting Unit
Reel & Bedknife



Item No	R&R Part No.	OEM Part No.	Description	Qty Req	Order Quantity
---------	--------------	--------------	-------------	---------	----------------

4	R170500	2206098	Roller - Grooved Repairable Steel	1	
---	---------	---------	-----------------------------------	---	--

Detail Description: Constructed with a through shaft and greasable tapered bearings for extended life, this roller can be repaired by unscrewing the ends and replacing the series of washers and spacers.:

Service Tools

5	R51-0880		Bedknife Screw Driver Tool	0	
---	----------	--	----------------------------	---	--

Detail Description: Easily install and remove bed knife screws with the help of a ratchet with 3/8" drive. Tool manufactured with hardened alloy steel.:

Other Parts Available

7	R2208003	2208003, A209044	Bearing - with Cup	2	
---	----------	---------------------	--------------------	---	--

8	R150477	64249-01, A119001	Screw - Bedknife 5/16-18 x 1/2	11	
---	---------	----------------------	--------------------------------	----	--

9	R170503		Shaft	1	
---	---------	--	-------	---	--

10	R150673		Washer - 3 Repairable Roller	10	
----	---------	--	------------------------------	----	--

11	R150671		Spacer - 2 3/4 / 3 Rollers 13/16 L	0	
----	---------	--	---------------------------------------	---	--

11	R150676		Spacer - 2-3/4 Dia x 1-1/4 L	11	
----	---------	--	------------------------------	----	--

12	R100103		Roller End - Grooved	2	
----	---------	--	----------------------	---	--

13	R150691		Screw - Set Nyloc 3/8-16 x 3/8	4	
----	---------	--	--------------------------------	---	--

14	R170714		Fitting - Pressure Relief	2	
----	---------	--	---------------------------	---	--

15	R253-122		Seal	2	
----	----------	--	------	---	--

16	R254-79		Cup - Bearing	2	
----	---------	--	---------------	---	--

Detail Description: Use R254-79M installation mandrel to properly install race.:

17	R254-78		Tapered Bearing Cone	2	
----	---------	--	----------------------	---	--

All original equipment manufacturers names and part numbers are used for identification purposes only, and we are in no way implying that our products are original equipment parts. Prices subject to change without notice.



Replaces Ransomes 250 Parts

Cutting Unit
Reel & Bedknife



Item No	R&R Part No.	OEM Part No.	Description	Qty Req	Order Quantity
18	R253-117		Seal - Outer Triple Lip	2	
19	R5-4038		Sleeve - Wear Reel Shaft	2	
20	R3296-15		Locknut - 3/4-16 Nylon Jam	2	
21	R302-5		Fitting - Grease	2	
22	R2208011-01	2208011-01, A230019	Seal - Oil Reel	1	
23	R4114239	4114239	Insert - Splined Reel	1	
24	R64176-05	64176-05	Pin - Spiral Roll Reel	1	
25	R2722589	2722589	Coupling - Reel	1	
26	R150504		Washer	2	
27	R500534	2208006	Bearing - with Cup	2	

Detail Description: Kit includes: 1 ea R254-78- Bearing Cone & R254-79 Bearing Cone:

All original equipment manufacturers names and part numbers are used for identification purposes only, and we are in no way implying that our products are original equipment parts. Prices subject to change without notice.