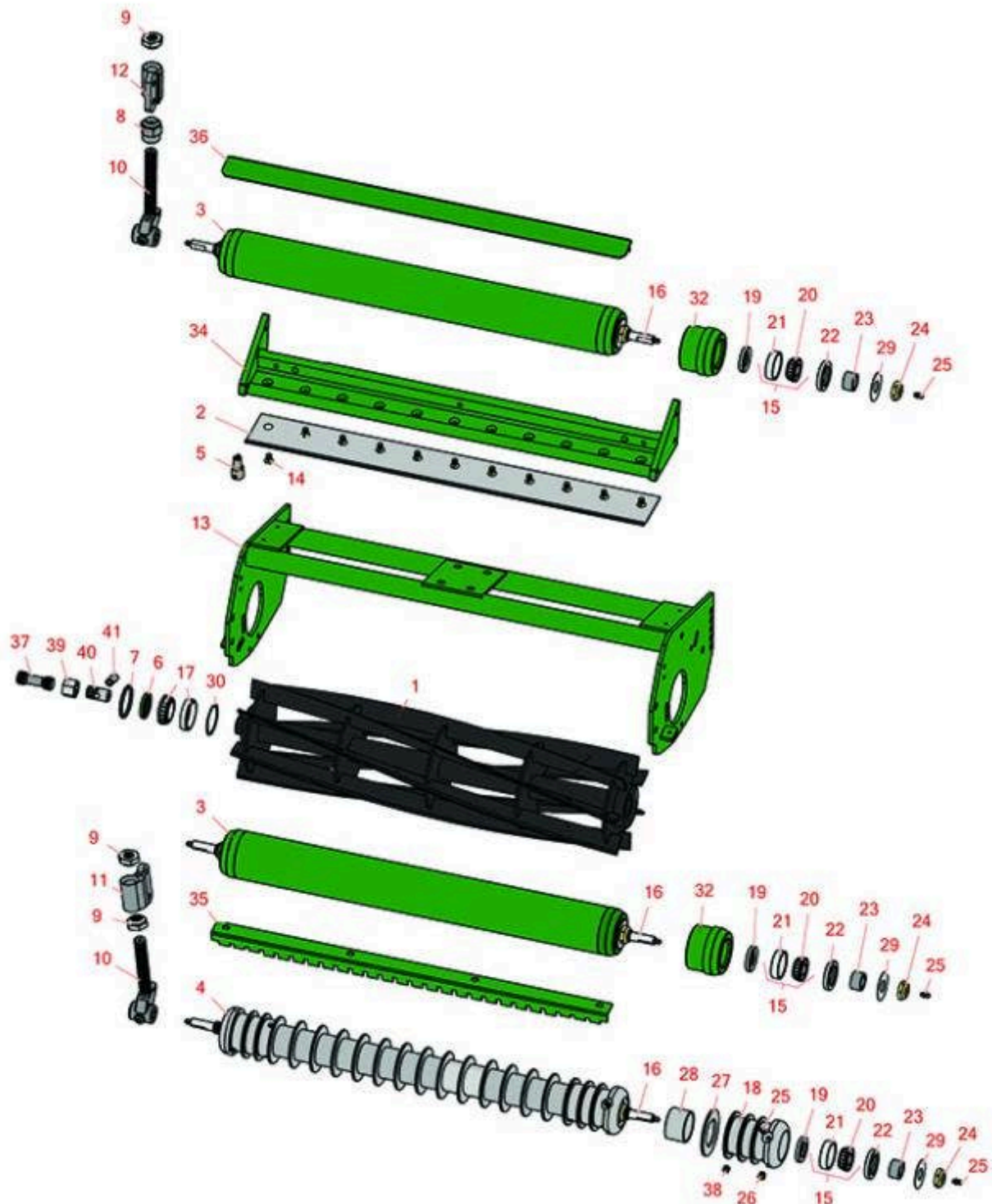




# Replaces Ransomes 185, 285, 300, 305 & 405 Parts

Cutting Unit  
Reel & Bedknife



All original equipment manufacturers names and part numbers are used for identification purposes only, and we are in no way implying that our products are original equipment parts. Prices subject to change without notice.



# Replaces Ransomes 185, 285, 300, 305 & 405 Parts

Cutting Unit  
Reel & Bedknife



Item No	R&R Part No.	OEM Part No.	Description	Qty Req	Order Quantity
---------	--------------	--------------	-------------	---------	----------------

## R&R Reels, Lifetime Guaranteed

1	<b>RMBE2377</b>	MBE2377	Reel - 7 Blade	1
---	-----------------	---------	----------------	---

*Tech Note: Fits 300:*

*Detail Description: R&R Reel blades are expertly crafted from premium high carbon-boron alloy steel, heat-treated to perfectly complement both R&R and OEM bedknives. Each reel undergoes precision cylindrical grinding on bearing surfaces, followed by relief grinding for optimal performance. Advanced computer balancing ensures extended reel and bearing life. Backed by our lifetime guarantee against defects in materials and craftsmanship under normal use, R&R Reels deliver unmatched durability and cutting precision you can trust.:*

1	<b>RMBE2378</b>	MBE2378	Reel - 11 Blade	1
---	-----------------	---------	-----------------	---

*Tech Note: Fits 300:*

*Detail Description: R&R Reel blades are expertly crafted from premium high carbon-boron alloy steel, heat-treated to perfectly complement both R&R and OEM bedknives. Each reel undergoes precision cylindrical grinding on bearing surfaces, followed by relief grinding for optimal performance. Advanced computer balancing ensures extended reel and bearing life. Backed by our lifetime guarantee against defects in materials and craftsmanship under normal use, R&R Reels deliver unmatched durability and cutting precision you can trust.:*

1	<b>RMBF0325</b>	MBF0325	Reel - 7 Blade	1
---	-----------------	---------	----------------	---

*Tech Note: Fits 185,285,305 & 405:*

*Detail Description: R&R Reel blades are expertly crafted from premium high carbon-boron alloy steel, heat-treated to perfectly complement both R&R and OEM bedknives. Each reel undergoes precision cylindrical grinding on bearing surfaces, followed by relief grinding for optimal performance. Advanced computer balancing ensures extended reel and bearing life. Backed by our lifetime guarantee against defects in materials and craftsmanship under normal use, R&R Reels deliver unmatched durability and cutting precision you can trust.:*

1	<b>RMBF0326</b>	MBF0326	Reel - 11 Blade	1
---	-----------------	---------	-----------------	---

*Tech Note: Fits 185,285,305 & 405:*

*Detail Description: R&R Reel blades are expertly crafted from premium high carbon-boron alloy steel, heat-treated to perfectly complement both R&R and OEM bedknives. Each reel undergoes precision cylindrical grinding on bearing surfaces, followed by relief grinding for optimal performance. Advanced computer balancing ensures extended reel and bearing life. Backed by our lifetime guarantee against defects in materials and craftsmanship under normal use, R&R Reels deliver unmatched durability and cutting precision you can trust.:*

All original equipment manufacturers names and part numbers are used for identification purposes only, and we are in no way implying that our products are original equipment parts. Prices subject to change without notice.



# Replaces Ransomes 185, 285, 300, 305 & 405 Parts

Cutting Unit  
Reel & Bedknife



Item No	R&R Part No.	OEM Part No.	Description	Qty Req	Order Quantity
---------	--------------	--------------	-------------	---------	----------------

## R&R Bedknives, Lifetime Guaranteed

2	<b>RMBA7103</b>	MBA7103	Bedknife - Thick	1
---	-----------------	---------	------------------	---

*Detail Description: R&R Bedknives are manufactured from high carbon-boron alloy steel and then hardened to RC46-49 to match the temper of our reel blades and original equipment reels. Bedknives are surface ground on the top and front edge and straightened three times before being packaged with oil for rust prevention. All R&R Bedknives now have an increased front edge grind for added life. All R&R Bedknives are guaranteed against defects in material and workmanship under normal use for the life of the part.:*

2	<b>RMBA7096A</b>	MBA7096A	Bedknife - Thin	1
---	------------------	----------	-----------------	---

*Detail Description: R&R Bedknives are manufactured from high carbon-boron alloy steel and then hardened to RC46-49 to match the temper of our reel blades and original equipment reels. Bedknives are surface ground on the top and front edge and straightened three times before being packaged with oil for rust prevention. All R&R Bedknives now have an increased front edge grind for added life. All R&R Bedknives are guaranteed against defects in material and workmanship under normal use for the life of the part.:*

## R&R Rollers

3	<b>R170305</b>	LMSE079	Roller - Smooth Tubular Steel	1
---	----------------	---------	-------------------------------	---

*Detail Description: Constructed with a through shaft, this heavy duty roller uses greasable tapered bearings for extended life.:*

4	<b>R170300</b>	LMSE080	Roller - Grooved Repairable Steel	1
---	----------------	---------	-----------------------------------	---

*Detail Description: Constructed with a through shaft and greasable tapered bearings for extended life, this roller can be repaired by unscrewing the ends and replacing the series of washers and spacers.:*

## Service Tools

5	<b>R51-0880</b>		Bedknife Screw Driver Tool	0
---	-----------------	--	----------------------------	---

*Detail Description: Easily install and remove bed knife screws with the help of a ratchet with 3/8" drive. Tool manufactured with hardened alloy steel.:*

## Other Parts Available

All original equipment manufacturers names and part numbers are used for identification purposes only, and we are in no way implying that our products are original equipment parts. Prices subject to change without notice.



# Replaces Ransomes 185, 285, 300, 305 & 405 Parts

Cutting Unit  
Reel & Bedknife



Item No	R&R Part No.	OEM Part No.	Description	Qty Req	Order Quantity
6	R2208011-01	2208011-01, A230019	Seal - Oil Reel	1	
7	RA221327	A221327	O-Ring - Reel	1	
7	RA221031	A221031	O-Ring - Reel	1	
8	RMBE4017	MBE4017	Nut - Rear Roller Adj	2	
9	RMBE4001	MBE4001	Nut - Adjusting Front/Rear Rlr	6	
10	RMBE3982	MBE3982	Bracket - Roller Front / Rear	4	
11	RMBE3984	MBE3984	Housing - Roller Adj LH	1	
11	RMBE3985	MBE3985	Housing - Roller Adj RH	1	
<i>Tech Note: (shown):</i>					
12	RMBE3986	MBE3986	Housing - Roller Adj Rear	2	
13	RMBE1808H	MBE1808H	Frame	1	
14	R150477	64249-01, A119001	Screw - Bedknife 5/16-18 x 1/2	11	
15	R500534	2208006	Bearing - with Cup	2	
<i>Detail Description: Kit includes: 1 ea R254-78- Bearing Cone &amp; R254-79 Bearing Cone:</i>					
16	R170302		Shaft	1	
17	R2208003	2208003, A209044	Bearing - with Cup	2	
18	R100103		Roller End - Grooved	2	
19	R253-122		Seal	2	
20	R254-78		Tapered Bearing Cone	2	
21	R254-79		Cup - Bearing	2	

All original equipment manufacturers names and part numbers are used for identification purposes only, and we are in no way implying that our products are original equipment parts. Prices subject to change without notice.



# Replaces Ransomes 185, 285, 300, 305 & 405 Parts

Cutting Unit  
Reel & Bedknife



Item No	R&R Part No.	OEM Part No.	Description	Qty Req	Order Quantity
<i>Detail Description: Use R254-79M installation mandrel to properly install race.:</i>					
22	R253-117		Seal - Outer Triple Lip	2	
23	R5-4038		Sleeve - Wear Reel Shaft	2	
24	R3296-15		Locknut - 3/4-16 Nylon Jam	2	
25	R302-5		Fitting - Grease	2	
26	R170714		Fitting - Pressure Relief	2	
27	R150673		Washer - 3 Repairable Roller	0	
28	R150676		Spacer - 2-3/4 Dia x 1-1/4 L	0	
29	R150504		Washer	2	
30	RA230013	A230013	Retaining Ring	2	
32	R170308		Roller End - Solid 3	2	
34	R170310		Bed Bar	1	
35	R170303		Scraper - Fits Grooved	1	
35	RMBE4335	MBE4335	Scraper - Fits Rans Grooved	1	
36	RA913440	A913440	Deflector - Bed Bar	1	
37	RA800019	A800019	Coupling - Drive Reel	1	
38	R150691		Screw - Set Nyloc 3/8-16 x 3/8	4	
39	R2722589	2722589	Coupling - Reel	1	
40	R4114239	4114239	Insert - Splined Reel	1	
41	R64176-05	64176-05	Pin - Spiral Roll Reel	1	

All original equipment manufacturers names and part numbers are used for identification purposes only, and we are in no way implying that our products are original equipment parts. Prices subject to change without notice.