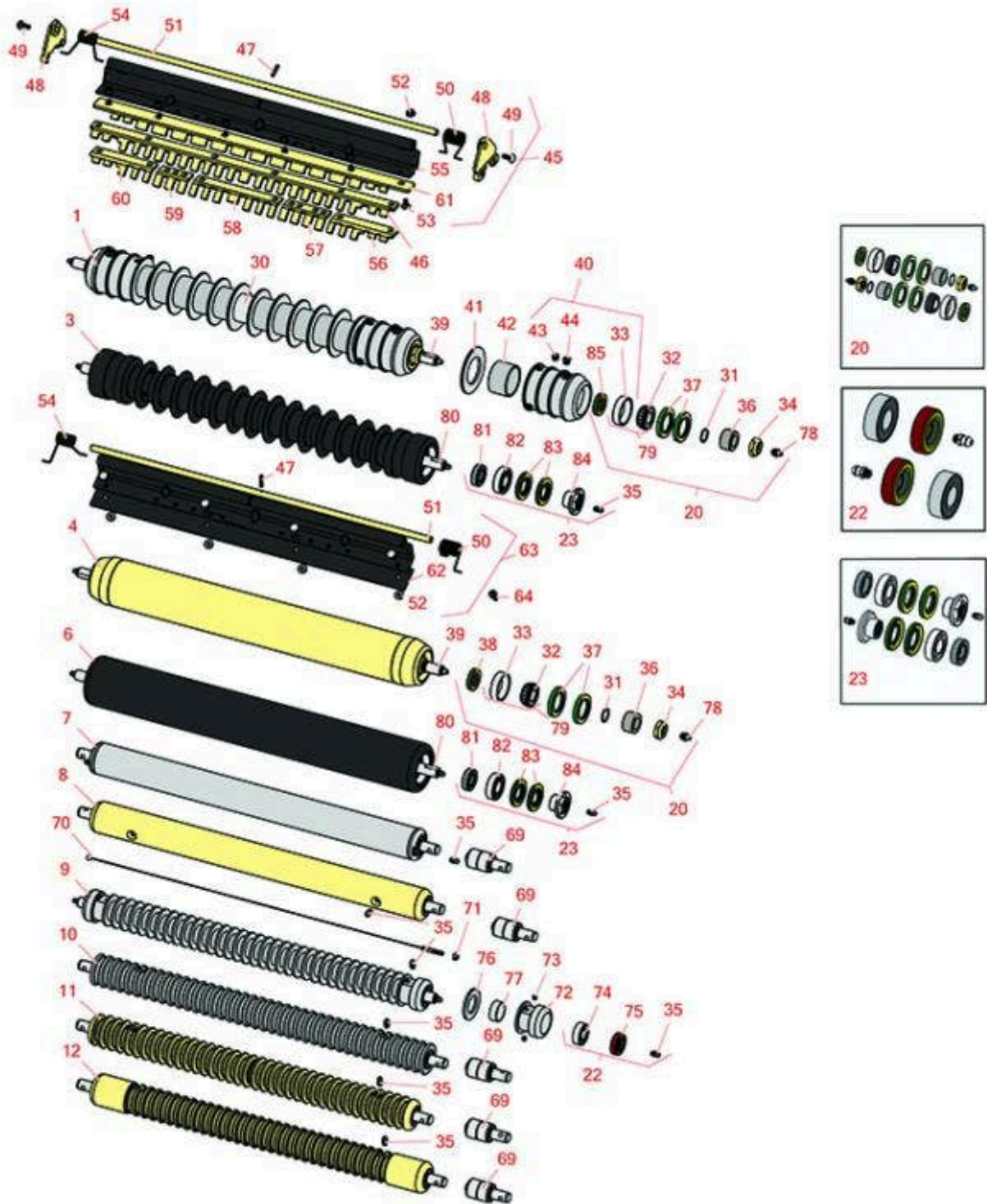




# Replaces John Deere 3225B Reel Mower

## Parts

Heavy Cutting Unit  
Front Rollers



All original equipment manufacturers names and part numbers are used for identification purposes only, and we are in no way implying that our products are original equipment parts. Prices subject to change without notice.



# Replaces John Deere 3225B Reel Mower

## Parts

Heavy Cutting Unit  
Front Rollers



Item No	R&R Part No.	OEM Part No.	Description	Qty Req	Order Quantity
---------	--------------	--------------	-------------	---------	----------------

### R&R Front Rollers

1	<b>R500512</b>	AMT2966, BM25317	Roller - Grooved Repairable Steel	0
---	----------------	---------------------	-----------------------------------	---

*Tech Note: Constructed with a through shaft and greasable ball bearings. This roller can be repaired by unscrewing the ends and replacing the series of washers and spacers.:*

3	<b>R1203820</b>	1203752	Roller - Fusion Grooved UHMW Polyethylene	0
---	-----------------	---------	---	---

*Tech Note: Fusion Rollers combine the best features of our UHMW plastic rollers with a heavy-duty internal bearing system. Machined from solid UHMW plastic that prevents build-up of debris. This roller has a patented deep groove design and ... <Click Part# for more>:*

4	<b>RAET11263</b>	AET11263, AMT2967	Roller - Smooth Tubular Steel	0
---	------------------	----------------------	-------------------------------	---

*Tech Note: Constructed with a through shaft, this heavy duty roller uses greasable tapered bearings for extended life.:*

6	<b>R1203825</b>		Roller - Fusion Smooth UHMW Polyethylene	0
---	-----------------	--	--	---

*Tech Note: Fusion Rollers combine the best features of our UHMW plastic rollers with a heavy-duty internal bearing system. Machined from solid UHMW plastic that prevents build-up of debris. This roller turns on precision stainless ball bear... <Click Part# for more>:*

7	<b>RAET10111</b>	AET10111, AMT2876	Roller - Smooth Tubular Steel	0
---	------------------	----------------------	-------------------------------	---

*Tech Note: This tubular steel roller uses greasable "water-pump" style bearings.:*

8	<b>RAMT1442</b>	AMT1442, AMT2878	Roller - Smooth Solid Steel	0
---	-----------------	---------------------	-----------------------------	---

*Tech Note: Machined from solid steel, this heavy weight roller uses greasable "water-pump" style bearings.:*

9	<b>R68527R</b>		Roller - Grooved Repairable Steel	0
---	----------------	--	-----------------------------------	---

*Tech Note: Constructed with a through shaft and greasable ball bearings, this roller can be repaired by unscrewing the ends and replacing the series of washers and spacers.:*

All original equipment manufacturers names and part numbers are used for identification purposes only, and we are in no way implying that our products are original equipment parts. Prices subject to change without notice.



# Replaces John Deere 3225B Reel Mower

## Parts

Heavy Cutting Unit  
Front Rollers



Item No	R&R Part No.	OEM Part No.	Description	Qty Req	Order Quantity
10	<b>RAMT1061</b>	AET10557, AMT1061, AMT2877	Roller - Grooved Machined Solid Steel	0	
<i>Tech Note: Machined from solid steel, this heavy weight roller uses greasable "water-pump" style bearings.:</i>					
11	<b>RAET10954</b>	AET10954, AMT2875, AMT2879	Roller - Grooved Machined Solid Steel	0	
<i>Tech Note: Machined from solid steel, this heavy weight roller uses greasable "water-pump" style bearings.:</i>					
12	<b>RAMT1443</b>	AMT1443, AMT2879	Roller - Grooved Machined Solid Steel	0	
<i>Tech Note: Machined from solid steel, this heavy weight roller uses greasable "water-pump" style bearings. Extended length body.:</i>					
<b>Overhaul Kits</b>					
20	<b>RAET10632</b>	AET10632	Overhaul Kit - Roller	0	
<i>Tech Note: Includes 4 ea: RET15755 Seal; 2 ea: R237-54 O-Ring, R253-122 Seal, R254-78 Bearing, R254-79 Cup, R3296-15 Locknut, R471219 Grease Zerk, RET15726 Sleeve, RET15756 Seal:</i>					
22	<b>R100130</b>		Overhaul Kit - Roller	0	
<i>Tech Note: Includes 2 ea.: R302-5 Grease Fittings, R303558 Bearings, &amp; R305115 Seals:</i>					
23	<b>R114-5430</b>		Overhaul Kit - Roller	0	
<i>Tech Note: Includes 4 ea.: R112-7494 Seals; 2 ea.: R302-5 Grease Zerks, R114-3717 Seals, R112-5290 Bearings &amp; R114-3745 Locknuts:</i>					
<b>Other Parts Available</b>					
30	<b>R500513</b>		Tube - Only Grooved Roller	1	
31	<b>R237-54</b>	U46731, U6731	O-Ring - Small	2	
32	<b>R254-78</b>	JD8188	Tapered Bearing Cone	2	

All original equipment manufacturers names and part numbers are used for identification purposes only, and we are in no way implying that our products are original equipment parts. Prices subject to change without notice.



# Replaces John Deere 3225B Reel Mower

## Parts

Heavy Cutting Unit  
Front Rollers



Item No	R&R Part No.	OEM Part No.	Description	Qty Req	Order Quantity
33	<b>R254-79</b>	JD8226	Cup - Bearing	2	
<i>Tech Note: Use R254-79M installation mandrel to properly install race.:</i>					
34	<b>R3296-15</b>	N101345	Locknut - 3/4-16 Nylon Jam	2	
35	<b>R302-5</b>	JD7797, JD7842, JD7844	Fitting - Grease	2	
36	<b>RET15726</b>	ET15726, RET15726	Sleeve - Wear Hardened	2	
37	<b>RET15755</b>	ET15755	Seal - Oil	4	
38	<b>RET15756</b>	ET15756, MT1739, MT739	Seal	2	
39	<b>RET17515</b>	ET17515	Shaft - Roller	1	
40	<b>R500511</b>		Roller End - Threaded 3	2	
41	<b>R150673</b>		Washer - 3 Repairable Roller	11	
42	<b>R150676</b>		Spacer - 2-3/4 Dia x 1-1/4 L	10	
43	<b>R150691</b>		Screw - Set Nyloc 3/8-16 x 3/8	4	
44	<b>R170714</b>	E14814	Fitting - Pressure Relief	2	
45	<b>R500559</b>	BM18680, MT18680	Scrapper Kit - Grooved Roller	1	
<i>Tech Note: Fits John Deere AET11262 &amp; AMT2966 Grooved Roller Only:</i>					
45	<b>R500573</b>		Scrapper Kit - SET/5	1	
<i>Tech Note: Fits R&amp;R R500512 Roller Only &amp; Incl R500572 Scrapper:</i>					
46	<b>R500558</b>		Scrapper - Grooved Roller	5	
<i>Tech Note: Fits OEM Roller Only. 1 Piece Scrapper fits OEM AET11262 &amp; AMT2966 Grooved Roller:</i>					

All original equipment manufacturers names and part numbers are used for identification purposes only, and we are in no way implying that our products are original equipment parts. Prices subject to change without notice.



# Replaces John Deere 3225B Reel Mower Parts

Heavy Cutting Unit  
Front Rollers



Item No	R&R Part No.	OEM Part No.	Description	Qty Req	Order Quantity
47	<b>R34M7010</b>	34M7010	Pin - Spring	5	
48	<b>RMT2407</b>	MT2407	Bracket - Roller Scraper	10	
49	<b>R03M7221</b>	03M7221	Bolt - Carriage M6 x 16	20	
50	<b>RET17629</b>	ET17629	Spring - Torsion LH	5	
51	<b>RET17757</b>	ET11757, ET17757	Pin - Scraper	5	
52	<b>R14M7303</b>	14M7303	Nut - 6mm x 1.0 Flanged	14	
53	<b>R03M7251</b>	03M7251	Bolt - Gr. Roller Scraper	30	
54	<b>RET17630</b>	ET17630	Spring - Torsion RH	5	
55	<b>R500571</b>	MT2369	Bar - Scraper	5	
56	<b>RMT5159</b>	MT5159	Scraper - Fits J.D. LH End	5	
57	<b>RMT2341</b>	MT2341	Section - Grooved Scraper 4 Tooth	5	
58	<b>RMT2340</b>	MT2340	Scraper - Fits J.D. Center	5	
59	<b>RMT2342</b>	MT2342	Section - Grooved Scraper 3 Tooth	5	
60	<b>RMT5158</b>	MT5158	Scraper - Fits J.D. RH End	5	
61	<b>R500572</b>		Scraper - Fits R500512 Only	5	
62	<b>RMT2595</b>	MT2595, MT2895	Scraper Blade - Solid Roller	1	
63	<b>RBM17684</b>	BM17684	Scraper Kit - Solid Roller SET/5	1	
<i>Tech Note: Includes 20 ea: R03M7221 Bolt, R14M7303 Nut; 5 ea: R34M7010 Pin, R500571 Scraper Bar, RET17629 LH Spring, RET17630 RH Spring, RET17757 Pin, RMT2595 Scraper Blade:</i>					
64	<b>R21M7246</b>	21M7246	Screw	6	

All original equipment manufacturers names and part numbers are used for identification purposes only, and we are in no way implying that our products are original equipment parts. Prices subject to change without notice.



# Replaces John Deere 3225B Reel Mower

## Parts

Heavy Cutting Unit  
Front Rollers



Item No	R&R Part No.	OEM Part No.	Description	Qty Req	Order Quantity
69	<b>RAA35741</b>	AA35741, AET10129, TCA22836	Bearing	2	
<i>Tech Note: 1/4" Side Hole:</i>					
70	<b>RAET10139</b>	AET10139	Cable - Roller Scraper	1	
71	<b>RU45916</b>	14M7298, U45916	Locknut - 10-24 ESNA	2	
72	<b>R150650</b>		Roller End - 2 Repairable	2	
73	<b>R150690</b>		Screw - Set 1/4-20 x 1/4	4	
74	<b>R303558</b>	ET15220	Bearing - Roller	2	
75	<b>R305115</b>	ET15219	Seal - Roller	2	
76	<b>R150652</b>		Washer - 2 Roller	33	
77	<b>R150651</b>		Spacer - 2-3/8 Roller	34	
78	<b>R471219</b>	471219, JD7759, JD7798	Zerk - Grease	2	
79	<b>R500534</b>		Bearing - with Cup	2	
80	<b>R1203821</b>		Shaft - Fusion Roller	1	
81	<b>R114-3717</b>		Seal	2	
82	<b>R112-5290</b>		Bearing - Stainless	2	
83	<b>R112-7494</b>		Seal	4	
84	<b>R114-3745</b>		Locknut - Bearing - Stainless	2	
85	<b>R253-122</b>	253-122	Seal	2	

All original equipment manufacturers names and part numbers are used for identification purposes only, and we are in no way implying that our products are original equipment parts. Prices subject to change without notice.