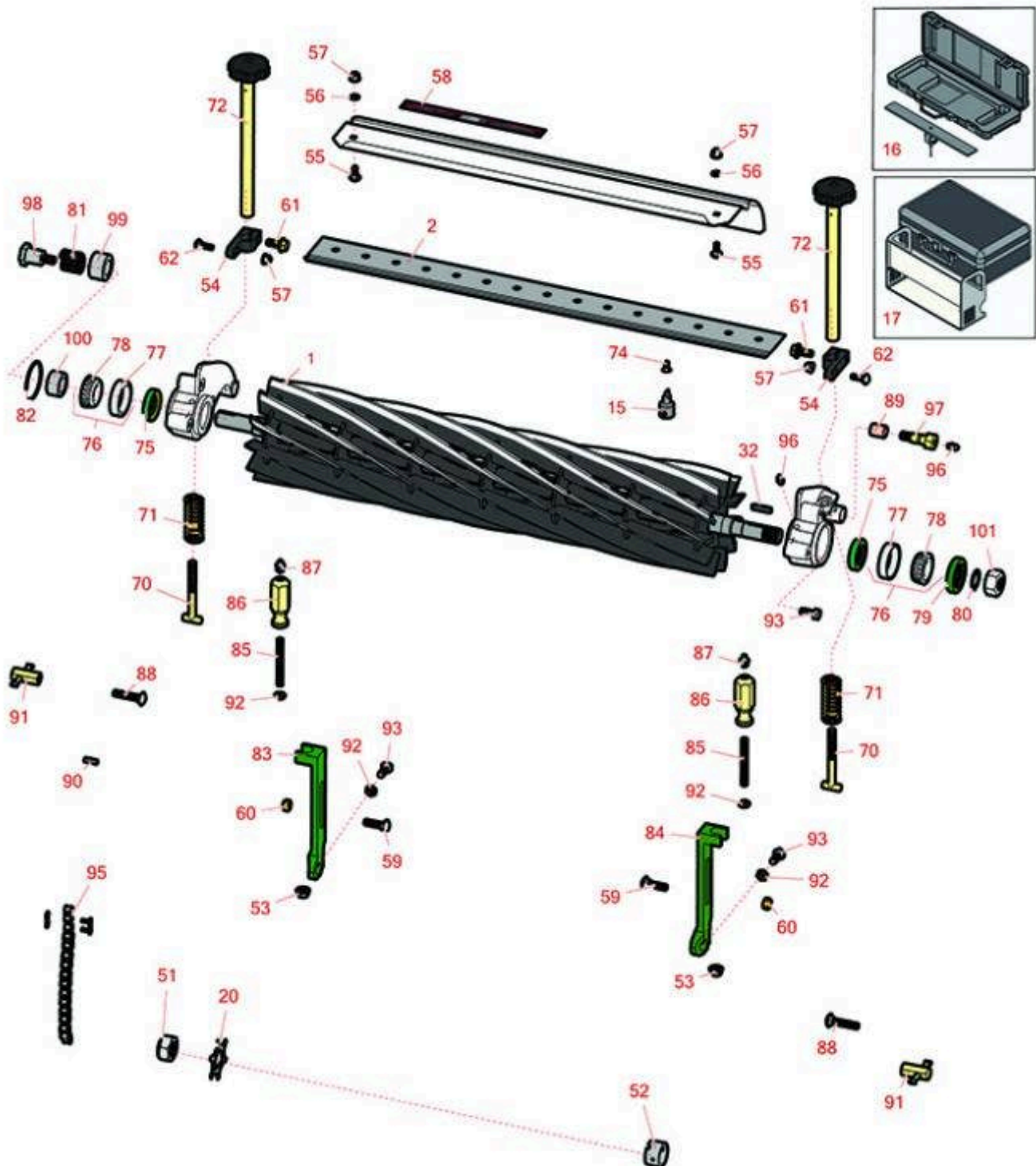




# Replaces John Deere 260B Walk-Behind Greens Mower Parts

Cutting Unit  
Reel & Bedknife



All original equipment manufacturers names and part numbers are used for identification purposes only, and we are in no way implying that our products are original equipment parts. Prices subject to change without notice.



# Replaces John Deere 260B Walk-Behind Greens Mower Parts

Cutting Unit  
Reel & Bedknife



Item No	R&R Part No.	OEM Part No.	Description	Qty Req	Order Quantity
---------	--------------	--------------	-------------	---------	----------------

## R&R Reels, Lifetime Guaranteed

1	<b>RAMT2903</b>	AMT2903	Reel - 7 Blade 26in	1
---	-----------------	---------	---------------------	---

*Detail Description: R&R Reel blades are expertly crafted from premium high carbon-boron alloy steel, heat-treated to perfectly complement both R&R and OEM bedknives. Each reel undergoes precision cylindrical grinding on bearing surfaces, followed by relief grinding for optimal performance. Advanced computer balancing ensures extended reel and bearing life. Backed by our lifetime guarantee against defects in materials and craftsmanship under normal use, R&R Reels deliver unmatched durability and cutting precision you can trust.:*

1	<b>RAMT2898</b>	AMT2716, AMT2898	Reel - 11 Blade 26in	1
---	-----------------	---------------------	----------------------	---

*Detail Description: R&R Reel blades are expertly crafted from premium high carbon-boron alloy steel, heat-treated to perfectly complement both R&R and OEM bedknives. Each reel undergoes precision cylindrical grinding on bearing surfaces, followed by relief grinding for optimal performance. Advanced computer balancing ensures extended reel and bearing life. Backed by our lifetime guarantee against defects in materials and craftsmanship under normal use, R&R Reels deliver unmatched durability and cutting precision you can trust.:*

## R&R Bedknives, Lifetime Guaranteed

2	<b>RMT6947</b>	MT6947, UC18871	Bedknife - Standard Thin	1
---	----------------	--------------------	--------------------------	---

*Detail Description: R&R Bedknives are manufactured from high carbon-boron alloy steel and then hardened to RC46-49 to match the temper of our reel blades and original equipment reels. Bedknives are surface ground on the top and front edge and straightened three times before being packaged with oil for rust prevention. All R&R Bedknives now have an increased front edge grind for added life. All R&R Bedknives are guaranteed against defects in material and workmanship under normal use for the life of the part.:*

2	<b>RMT6946</b>	MT6946, UC18883	Bedknife - High Cut	1
---	----------------	--------------------	---------------------	---

*Detail Description: R&R Bedknives are manufactured from high carbon-boron alloy steel and then hardened to RC46-49 to match the temper of our reel blades and original equipment reels. Bedknives are surface ground on the top and front edge and straightened three times before being packaged with oil for rust prevention. All R&R Bedknives now have an increased front edge grind for added life. All R&R Bedknives are guaranteed against defects in material and workmanship under normal use for the life of the part.:*

## Service Tools

15	<b>R101278T</b>		Bedknife Screw Driver Tool	1
----	-----------------	--	----------------------------	---

All original equipment manufacturers names and part numbers are used for identification purposes only, and we are in no way implying that our products are original equipment parts. Prices subject to change without notice.



# Replaces John Deere 260B Walk-Behind Greens Mower Parts

Cutting Unit  
Reel & Bedknife



Item No	R&R Part No.	OEM Part No.	Description	Qty Req	Order Quantity
---------	--------------	--------------	-------------	---------	----------------

*Tech Note: Easily install and remove bed knife screws with the help of a ratchet. Tool manufactured with hardened alloy steel.:*

*Detail Description: Easily install and remove bed knife screws with the help of a ratchet. Tool manufactured with hardened alloy steel.:*

16	<b>R184</b>		Masters Gauge - Digital - Inches/Metric	1	
----	-------------	--	---	---	--

*Detail Description: Accurately measures desired height of cut. Easy to read digital indicator. Displays measurements in decimals and fractions, in English and Metric. 18" length.:*

16	<b>R175</b>		Masters Gauge - Inches	1	
----	-------------	--	------------------------	---	--

*Detail Description: Dial indicator accurately measures desired height of cut. Easy to use. Place the bar on front and rear rollers then push the measuring rod until it touches the bedknife edge. Hard anodized aluminum. Fits all greensmowers. Easy to read dial indicator. Displays measurements in .001" increments. 18" length.:*

17	<b>RP508</b>		Turf Evaluation and Height of Cut Prism Tool	1	
----	--------------	--	--	---	--

*Detail Description: Measure actual turfgrass height of cut, as well as, smoothness and quality of cut, on your greens to 100th of an inch. This impressive Height of Cut Prism Gauge is designed with a solid glass prism in a stainless steel frame. Graduated lines show 1/8th, 1/10th and 1/16th (.002 lines) and 1 mm intervals with grass measurements up to 1-5/8 inches or 40 mm. tall. Complete with protective case. Measures inches and metric.:*

## Blades

20	<b>RET14707</b>	ET14707	Verti-Cut Blade - .025 x 2.375	88	
----	-----------------	---------	--------------------------------	----	--

20	<b>RET14707C</b>		Verti-Cut Blade - .025 x 2.375 Carbide Tipped	88	
----	------------------	--	---	----	--

## Other Parts Available

51	<b>RN198341</b>	N198341	Nut - Nyloc 7/8-14	1	
----	-----------------	---------	--------------------	---	--

52	<b>RET14917</b>	ET14917	Spacer	1	
----	-----------------	---------	--------	---	--

53	<b>RE63525</b>	E63525	Nut - Flanged M8-1.25	2	
----	----------------	--------	-----------------------	---	--

All original equipment manufacturers names and part numbers are used for identification purposes only, and we are in no way implying that our products are original equipment parts. Prices subject to change without notice.



# Replaces John Deere 260B Walk-Behind Greens Mower Parts

Cutting Unit  
Reel & Bedknife



Item No	R&R Part No.	OEM Part No.	Description	Qty Req	Order Quantity
54	RUC16469	MT6952, UC16469	Clamp	2	
55	R03M7221	03M7221	Bolt - Carriage M6 x 16	4	
56	R24M7139	24M7139	Washer - Flat 6mm	4	
57	R14M7397	14M7397, 14M7463	Locknut - 6mm x 1.0 ESNA Flanged	4	
58	RMT6517	MT6517	Label - Warning	1	
59	R03M7094	03M7094	Bolt - Carriage M8-1.25 x 30	2	
60	R14M7166	14M7166	Locknut - 8mm x 1.25 ESNA	2	
61	R19M7866	19M7866	Bolt - Flanged Hex M8-1.25 x 20	2	
62	R03M7222	03M7222	Bolt - Carriage M6-1.0 x 20	2	
70	RET11372	ET11372	Bolt - Adjusting Bed Bar	2	
71	RET11070	ET11070	Spring - Bed Bar	2	
72	RAMT2798	AMT2798	Handle - Adjuster	2	
74	R101278	21M7194	Screw - Bedknife	15	
75	RMT1160	MT1160	Seal - Reel	2	
76	R500610	AMT1108	Tapered Bearing Set - Cup and Cone	2	
<i>Detail Description: Includes:RAMT1108 &amp; RMT2108:</i>					
77	RMT2108	MT2108	Tapered Bearing Cup	2	
78	RAMT1108	AMT1108	Tapered Bearing Cone	2	
79	RET11073	ET11073	Seal - Reel Outer	1	
80	R40M7080	40M7080, ET11059	Ring - Snap	1	

All original equipment manufacturers names and part numbers are used for identification purposes only, and we are in no way implying that our products are original equipment parts. Prices subject to change without notice.



# Replaces John Deere 260B Walk-Behind Greens Mower Parts

Cutting Unit  
Reel & Bedknife



Item No	R&R Part No.	OEM Part No.	Description	Qty Req	Order Quantity
81	<b>RET11053</b>	ET11053	Spring - Reel	2	
82	<b>RM44162</b>	M44162	O-Ring - Reel	1	
83	<b>RMT5245</b>	MT5245	Bracket - Roller RH	1	
<i>Tech Note: Also use for vertical cutter.:</i>					
84	<b>RMT5244</b>	MT5244	Bracket - Roller LH	1	
<i>Tech Note: Also use for vertical cutter.:</i>					
85	<b>RMT1088</b>	MT1088	Stud - Roller Adj.	2	
<i>Tech Note: Also use for vertical cutter.:</i>					
86	<b>RMT1087</b>	MT1087	Knob - Adjusting Roller	2	
<i>Tech Note: Also use for vertical cutter.:</i>					
87	<b>R471219</b>	471219, 471231, JD7759, JD7798	Zerk - Grease	2	
<i>Tech Note: Also use for vertical cutter.:</i>					
88	<b>R03M7186</b>	03M7186	Bolt - Carriage 8-1.25 x 30mm	2	
89	<b>RP44946</b>	P44946	Bushing - Bronze	2	
90	<b>RR30587</b>	30587, R30587	Pin - Dowell 1/4 Dia. x .75	4	
91	<b>RET11356</b>	ET11356	Nut - Adjusting	2	
92	<b>R14M7151</b>	14M7151	Nut - Jam Roller Adj	2	
<i>Tech Note: Also use for vertical cutter.:</i>					
93	<b>R19M7881</b>	19M7881	Bolt - Hex HD M8-1.25 x 20	2	
<i>Tech Note: Also use for vertical cutter.:</i>					

All original equipment manufacturers names and part numbers are used for identification purposes only, and we are in no way implying that our products are original equipment parts. Prices subject to change without notice.



# Replaces John Deere 260B Walk-Behind Greens Mower Parts

*Cutting Unit  
Reel & Bedknife*



Item No	R&R Part No.	OEM Part No.	Description	Qty Req	Order Quantity
93	<b>RA50744</b>	A50744	Screw - 8mm-1.25 x 25 Sq HD	2	
94	<b>R49M7049</b>	49M7049	Key - 5mm x 22mm	1	
95	<b>RTCA16596</b>	TCA16596	Roller Chain #35	1	
96	<b>R302-5</b>	JD7797, JD7842, JD7844	Fitting - Grease	4	
97	<b>RET11371</b>	ET11371	Screw - Special	2	
98	<b>RET11367</b>	ET11367	Cap Screw - Special	1	
99	<b>RET11464</b>	ET11464	Spacer	1	
100	<b>RET11368</b>	ET11368	Spacer	1	
101	<b>R14M7306</b>	14M7306	Nut - M20-1.5	1	

All original equipment manufacturers names and part numbers are used for identification purposes only, and we are in no way implying that our products are original equipment parts. Prices subject to change without notice.