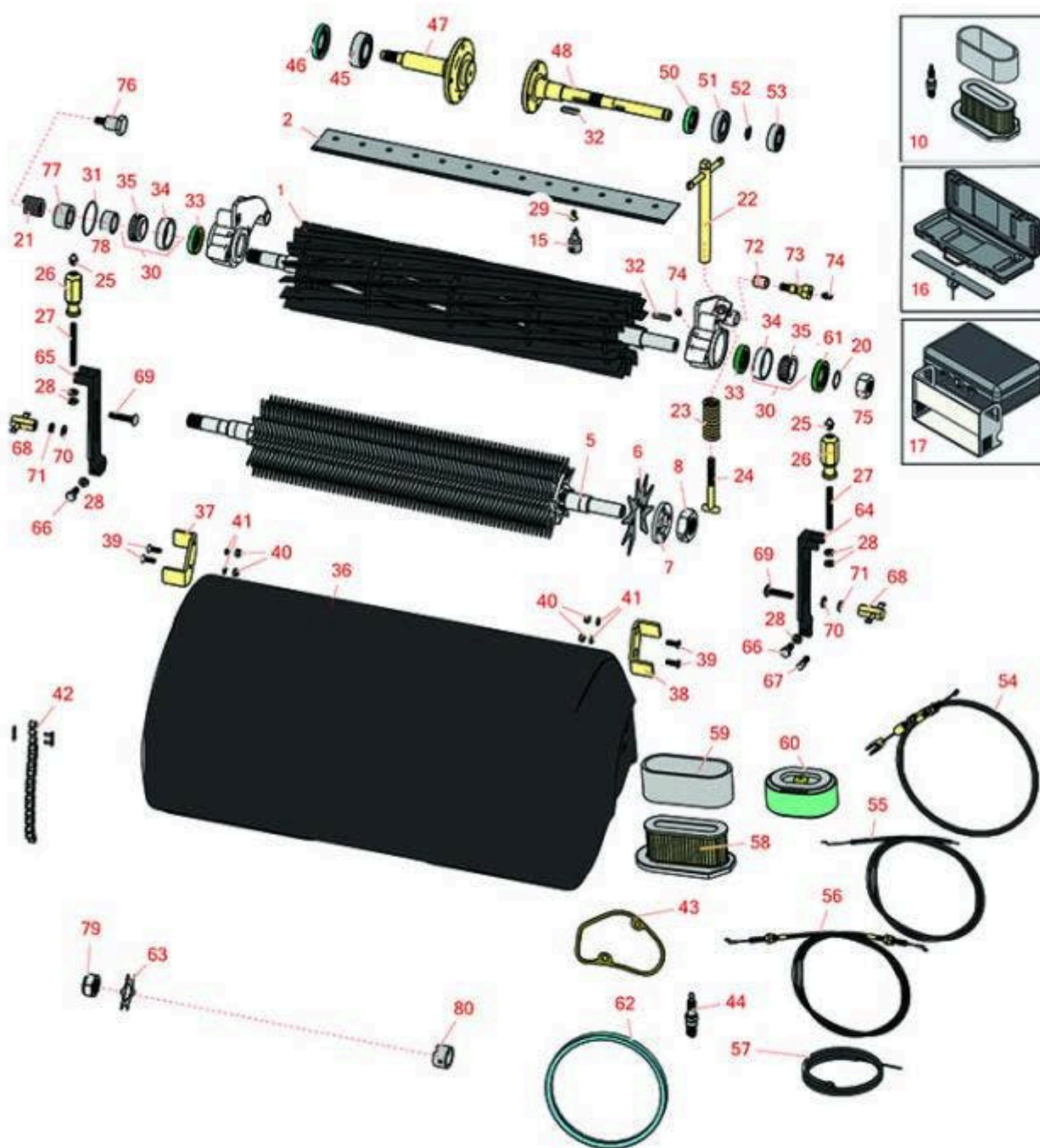




Replaces John Deere 220 Greens Mower

Parts

Cutting Unit
Reel & Bedknife



All original equipment manufacturers names and part numbers are used for identification purposes only, and we are in no way implying that our products are original equipment parts. Prices subject to change without notice.



Replaces John Deere 220 Greens Mower

Parts

Cutting Unit

Reel & Bedknife



Item No	R&R Part No.	OEM Part No.	Description	Qty Req	Order Quantity
---------	--------------	--------------	-------------	---------	----------------

R&R Reels, Lifetime Guaranteed

1	RAMT537	AMT2886, AMT537	Reel - 11 Blade 22in	1	
---	---------	--------------------	----------------------	---	--

Detail Description: R&R Reel blades are expertly crafted from premium high carbon-boron alloy steel, heat-treated to perfectly complement both R&R and OEM bedknives. Each reel undergoes precision cylindrical grinding on bearing surfaces, followed by relief grinding for optimal performance. Advanced computer balancing ensures extended reel and bearing life. Backed by our lifetime guarantee against defects in materials and craftsmanship under normal use, R&R Reels deliver unmatched durability and cutting precision you can trust.:

1	R130240		Reel - 14 Blade 22in	1	
---	---------	--	----------------------	---	--

Detail Description: R&R Reel blades are expertly crafted from premium high carbon-boron alloy steel, heat-treated to perfectly complement both R&R and OEM bedknives. Each reel undergoes precision cylindrical grinding on bearing surfaces, followed by relief grinding for optimal performance. Advanced computer balancing ensures extended reel and bearing life. Backed by our lifetime guarantee against defects in materials and craftsmanship under normal use, R&R Reels deliver unmatched durability and cutting precision you can trust.:

1	RAMT2866	AMT2279, AMT2866	Reel - 11 Blade	0	
---	----------	---------------------	-----------------	---	--

Detail Description: R&R Reel blades are expertly crafted from premium high carbon-boron alloy steel, heat-treated to perfectly complement both R&R and OEM bedknives. Each reel undergoes precision cylindrical grinding on bearing surfaces, followed by relief grinding for optimal performance. Advanced computer balancing ensures extended reel and bearing life. Backed by our lifetime guarantee against defects in materials and craftsmanship under normal use, R&R Reels deliver unmatched durability and cutting precision you can trust.:

R&R Bedknives, Lifetime Guaranteed

2	RET17532	ET11066, ET17532	Bedknife - Fairway .189 Min	1	
---	----------	---------------------	-----------------------------	---	--

Detail Description: R&R Bedknives are manufactured from high carbon-boron alloy steel and then hardened to RC46-49 to match the temper of our reel blades and original equipment reels. Bedknives are surface ground on the top and front edge and straightened three times before being packaged with oil for rust prevention. All R&R Bedknives now have an increased front edge grind for added life. All R&R Bedknives are guaranteed against defects in material and workmanship under normal use for the life of the part.:

All original equipment manufacturers names and part numbers are used for identification purposes only, and we are in no way implying that our products are original equipment parts. Prices subject to change without notice.



Replaces John Deere 220 Greens Mower

Parts

Cutting Unit

Reel & Bedknife



Item No	R&R Part No.	OEM Part No.	Description	Qty Req	Order Quantity
2	RMT7351	ET17489, MT7351, UC19154, UC28163	Bedknife - 22in Lo-Cut .079 Min. HOC	1	

Detail Description: R&R Bedknives are manufactured from high carbon-boron alloy steel and then hardened to RC46-49 to match the temper of our reel blades and original equipment reels. Bedknives are surface ground on the top and front edge and straightened three times before being packaged with oil for rust prevention. All R&R Bedknives now have an increased front edge grind for added life. All R&R Bedknives are guaranteed against defects in material and workmanship under normal use for the life of the part.:

2	RET17533	ET14402, ET17533, ET17767, MT4869, MT7351, UC18873	Bedknife - 22in Standard- .126 Min. HOC	1	
---	-----------------	---	--	---	--

Detail Description: R&R Bedknives are manufactured from high carbon-boron alloy steel and then hardened to RC46-49 to match the temper of our reel blades and original equipment reels. Bedknives are surface ground on the top and front edge and straightened three times before being packaged with oil for rust prevention. All R&R Bedknives now have an increased front edge grind for added life. All R&R Bedknives are guaranteed against defects in material and workmanship under normal use for the life of the part.:

2	RMT4846	MT4846, MT4906, UC18877	Bedknife - Tournament	1	
---	----------------	-------------------------------	-----------------------	---	--

Detail Description: R&R Bedknives are manufactured from high carbon-boron alloy steel and then hardened to RC46-49 to match the temper of our reel blades and original equipment reels. Bedknives are surface ground on the top and front edge and straightened three times before being packaged with oil for rust prevention. All R&R Bedknives now have an increased front edge grind for added life. All R&R Bedknives are guaranteed against defects in material and workmanship under normal use for the life of the part.:

2	RET17534	ET17534	Bedknife - 22in Tounament- .098 Min HOC	1	
---	-----------------	---------	--	---	--

Detail Description: R&R Bedknives are manufactured from high carbon-boron alloy steel and then hardened to RC46-49 to match the temper of our reel blades and original equipment reels. Bedknives are surface ground on the top and front edge and straightened three times before being packaged with oil for rust prevention. All R&R Bedknives now have an increased front edge grind for added life. All R&R Bedknives are guaranteed against defects in material and workmanship under normal use for the life of the part.:

All original equipment manufacturers names and part numbers are used for identification purposes only, and we are in no way implying that our products are original equipment parts. Prices subject to change without notice.



Replaces John Deere 220 Greens Mower

Parts

Cutting Unit
Reel & Bedknife



Item No	R&R Part No.	OEM Part No.	Description	Qty Req	Order Quantity
---------	--------------	--------------	-------------	---------	----------------

R&R Razor Tool Steel Bedknives, Lifetime Guaranteed

2	R130115		Bedknife - Razor Tool Steel - 22 Micro Cut	1	
---	---------	--	--	---	--

Detail Description: R&R Razor bedknives are manufactured from premium alloy tool steel steel and then hardened to RC48-51 to match the temper of our Razor reel blades and original equipment premium series reels. Bedknives are surface ground on the top and front edge and specially packaged for rust prevention. All R&R Bedknives now have an increased front edge grind for added life. All R&R Bedknives are guaranteed against defects in material and workmanship under normal use for the life of the part. You can expect up to double the life over standard bedknives.:

2	R130116	MT4846, UC18877	Bedknife - Razor Tool Steel - 22 Tournament Cut	1	
---	---------	--------------------	---	---	--

Detail Description: R&R Razor bedknives are manufactured from premium alloy tool steel steel and then hardened to RC48-51 to match the temper of our Razor reel blades and original equipment premium series reels. Bedknives are surface ground on the top and front edge and specially packaged for rust prevention. All R&R Bedknives now have an increased front edge grind for added life. All R&R Bedknives are guaranteed against defects in material and workmanship under normal use for the life of the part. You can expect up to double the life over standard bedknives.:

Vertical Reel to fit 220 & 220A

5	R130141		Shaft - V-Cut	1	
6	R101160		Verti-Cut Blade - Fits 22 Gm	73	
7	R352221		Spacer - Nylon V-Cut Shaft	74	
8	R352437		Nut - V-Cut Shaft	1	

Overhaul Kits

10	R30067		Filter Kit - 400 Hour Maintenance	1	
----	--------	--	-----------------------------------	---	--

Detail Description: Includes: 1 ea: RAK11013-2132 Air Filter, RAK11013-2133 Air Filter & RN7734 NGK Spark Plug:

Service Tools

15	R101278T		Bedknife Screw Driver Tool	1	
----	----------	--	----------------------------	---	--

All original equipment manufacturers names and part numbers are used for identification purposes only, and we are in no way implying that our products are original equipment parts. Prices subject to change without notice.



Replaces John Deere 220 Greens Mower

Parts

Cutting Unit

Reel & Bedknife



Item No	R&R Part No.	OEM Part No.	Description	Qty Req	Order Quantity
---------	--------------	--------------	-------------	---------	----------------

Tech Note: Easily install and remove bed knife screws with the help of a ratchet. Tool manufactured with hardened alloy steel.:

Detail Description: Easily install and remove bed knife screws with the help of a ratchet. Tool manufactured with hardened alloy steel.:

16	R184		Masters Gauge - Digital - Inches/Metric	1	
----	-------------	--	---	---	--

Detail Description: Accurately measures desired height of cut. Easy to read digital indicator. Displays measurements in decimals and fractions, in English and Metric. 18" length.:

16	R175		Masters Gauge - Inches	1	
----	-------------	--	------------------------	---	--

Detail Description: Dial indicator accurately measures desired height of cut. Easy to use. Place the bar on front and rear rollers then push the measuring rod until it touches the bedknife edge. Hard anodized aluminum. Fits all greensmowers. Easy to read dial indicator. Displays measurements in .001" increments. 18" length.:

17	RP508		Turf Evaluation and Height of Cut Prism Tool	1	
----	--------------	--	--	---	--

Detail Description: Measure actual turfgrass height of cut, as well as, smoothness and quality of cut, on your greens to 100th of an inch. This impressive Height of Cut Prism Gauge is designed with a solid glass prism in a stainless steel frame. Graduated lines show 1/8th, 1/10th and 1/16th (.002 lines) and 1 mm intervals with grass measurements up to 1-5/8 inches or 40 mm. tall. Complete with protective case. Measures inches and metric.:

Other Parts Available

20	R40M7080	40M7080, ET11059	Ring - Snap	1	
21	RET11053	ET11053	Spring - Reel	1	
22	RET11068	ET11068	Handle - Adjusting RH	1	
22	RET11069	ET11069	Handle - Adjusting LH	1	
23	RET11070	ET11070	Spring - Bed Bar	2	
24	RET11372	ET11372	Bolt - Adjusting Bed Bar	2	

All original equipment manufacturers names and part numbers are used for identification purposes only, and we are in no way implying that our products are original equipment parts. Prices subject to change without notice.



Replaces John Deere 220 Greens Mower

Parts

Cutting Unit
Reel & Bedknife



Item No	R&R Part No.	OEM Part No.	Description	Qty Req	Order Quantity
25	R471219	471219, 471231, JD7759, JD7798	Zerk - Grease	2	
26	RMT1087	MT1087	Knob - Adjusting Roller	2	
27	RMT1088	MT1088	Stud - Roller Adj.	2	
28	R14M7151	14M7151	Nut - Jam Roller Adj	6	
29	R101278	21M7194	Screw - Bedknife	13	
30	R500610	AMT1108	Tapered Bearing Set - Cup and Cone	2	
<i>Detail Description: Includes:RAMT1108 & RMT2108:</i>					
31	RM44162	M44162	O-Ring - Reel	1	
32	R49M7049	49M7049	Key - 5mm x 22mm	1	
33	RMT1160	MT1160	Seal - Reel	2	
34	RMT2108	MT2108	Tapered Bearing Cup	2	
35	RAMT1108	AMT1108	Tapered Bearing Cone	2	
36	RET10210	ET10210	Grass Basket	1	
<i>Detail Description:
Please note: Due to excessive air freight charges, this item will be shipped ground freight.:</i>					
37	RET11112	ET11112	Bracket - RH	1	
38	RET11113	ET11113	Bracket - LH	1	
39	R21M7326	21M7326	Screw - M6 x 20mm	4	
40	RE68605	E68605	Locknut - 6mm	4	
41	R24M7139	24M7139	Washer - Flat 6mm	4	

All original equipment manufacturers names and part numbers are used for identification purposes only, and we are in no way implying that our products are original equipment parts. Prices subject to change without notice.



Replaces John Deere 220 Greens Mower

Parts

Cutting Unit
Reel & Bedknife



Item No	R&R Part No.	OEM Part No.	Description	Qty Req	Order Quantity
42	RAMT1418	AMT1418, AMT734	Chain	1	
42	RAMT1419	AMT1419, ET11115	Chain	2	
42	RET11148	ET11148	Chain - Differential	1	
43	RET11043	ET11043	Gasket - V-Cut Housing	1	
44	RN7734	M123089, M802138	NGK Spark Plug - BPR5ES	1	
44	RN7131	M128206	NGK Spark Plug - BPR6ES	1	
45	R345050	AZ20217	Bearing	2	
46	RET10285	ET10285	Seal	2	
47	RET11081	ET11081	Spindle - Traction Roller	1	
48	RET11075	ET11075	Shaft - Rear Traction Roller	2	
50	RET11095	ET11095	Seal	2	
51	RA203604	ET11094	Bearing	2	
52	R40M1863	40M1863	Ring - Snap	2	
53	RA203603	JD8535	Bearing	2	
54	RAMT585	AMT585	Cable - Clutch	1	
55	RAMT586	AMT586	Control - Throttle	1	
56	RAMT592	AMT592	Cable - Brake	1	
57	RAMT1680	AMT1680	Control - Throttle	1	
58	RAK11013-2132	PT18389	Kawasaki Element-Air Filter	1	
58	RRF10182	PT18389, PT18390	SilverGuard Air Filter	1	

All original equipment manufacturers names and part numbers are used for identification purposes only, and we are in no way implying that our products are original equipment parts. Prices subject to change without notice.



Replaces John Deere 220 Greens Mower

Parts

Cutting Unit
Reel & Bedknife



Item No	R&R Part No.	OEM Part No.	Description	Qty Req	Order Quantity
59	RAK11013-2133	PT18390	Kawasaki Pre Cleaner Foam - Air Filter	1	
59	RRF10410	AM123909, PT18389	SilverGuard Foam Filter	1	
60	RAM123909	AM123909	Filter - Air with Foam	1	
61	RET11073	ET11073	Seal - Reel Outer	1	
62	RAMT1306	AMT1306	Belt - Matched Set/2	1	
63	RET14707	ET14707	Verti-Cut Blade - .025 x 2.375	60	
63	RET14707C		Verti-Cut Blade - .025 x 2.375 Carbide Tipped	60	
64	RMT5244	MT5244	Bracket - Roller LH	1	
65	RMT5245	MT5245	Bracket - Roller RH	1	
66	R19M7881	19M7881	Bolt - Hex HD M8-1.25 x 20	2	
67	RA50744	A50744	Screw - 8mm-1.25 x 25 Sq HD	2	
68	RET11356	ET11356	Nut - Adjusting	2	
69	R03M7186	03M7186	Bolt - Carriage 8-1.25 x 30mm	2	
70	R24M7036	24M7036	Washer - Flat 8mm Zinc	2	
71	R12M7065	12M7065	Washer - Lock 8mm Zinc	2	
72	RP44946	P44946	Bushing - Bronze	2	
73	RET11371	ET11371	Screw - Special	2	
74	R302-5	JD7797, JD7842, JD7844	Fitting - Grease	4	
75	R14M7306	14M7306	Nut - M20-1.5	1	

All original equipment manufacturers names and part numbers are used for identification purposes only, and we are in no way implying that our products are original equipment parts. Prices subject to change without notice.



Replaces John Deere 220 Greens Mower

Parts

Cutting Unit

Reel & Bedknife



Item No	R&R Part No.	OEM Part No.	Description	Qty Req	Order Quantity
76	RET11367	ET11367	Cap Screw - Special	1	
77	RET11464	ET11464	Spacer	1	
78	RET11368	ET11368	Spacer	1	
79	RN198341	N198341	Nut - Nyloc 7/8-14	1	
80	RET14917	ET14917	Spacer	1	

All original equipment manufacturers names and part numbers are used for identification purposes only, and we are in no way implying that our products are original equipment parts. Prices subject to change without notice.