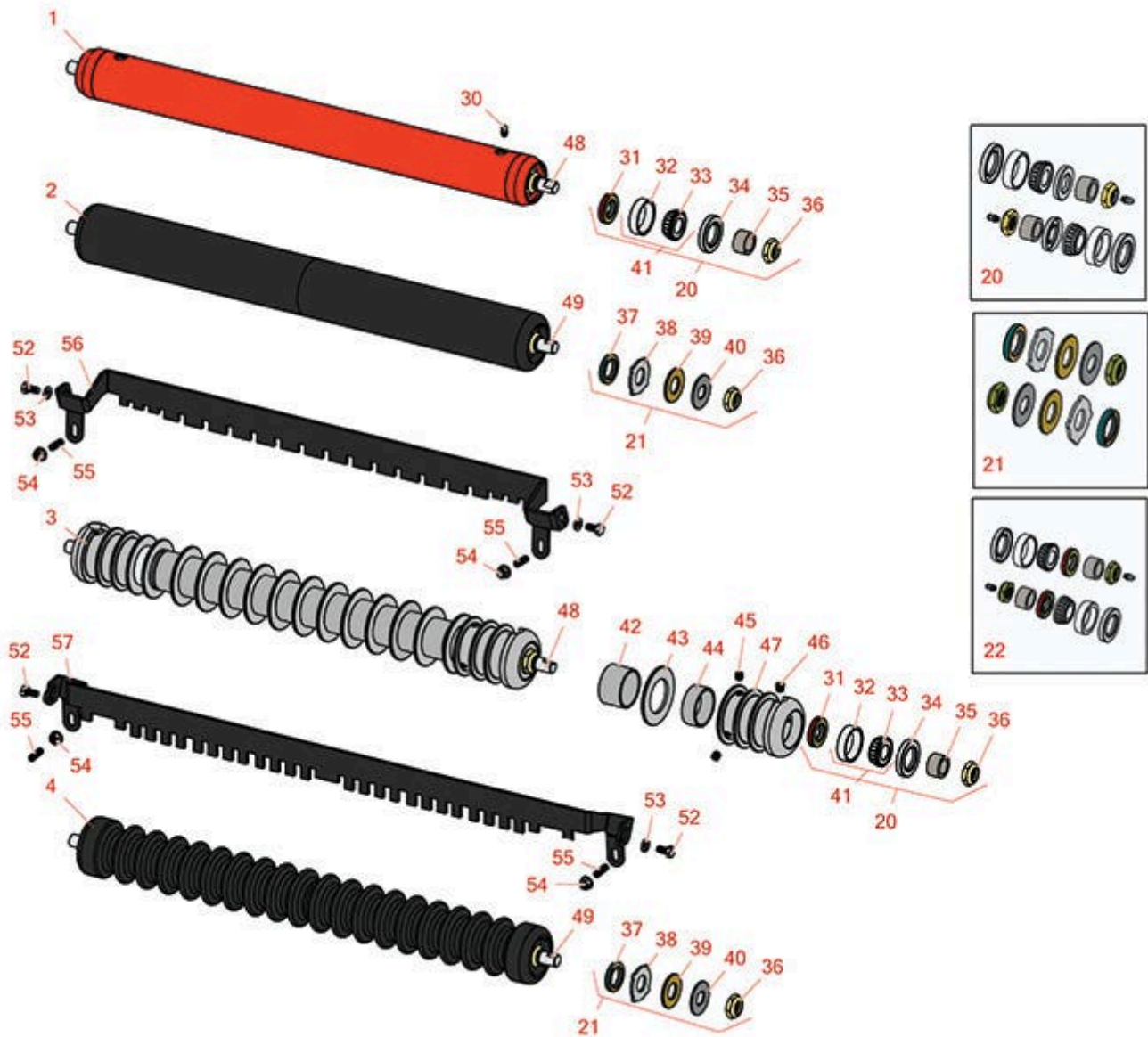




# Replaces Jacobsen Tri-King 1671 Parts

26" Belt Drive Cutting Unit  
Rollers



All original equipment manufacturers names and part numbers are used for identification purposes only, and we are in no way implying that our products are original equipment parts. Prices subject to change without notice.



# Replaces Jacobsen Tri-King 1671 Parts

26" Belt Drive Cutting Unit  
Rollers



Item No	R&R Part No.	OEM Part No.	Description	Qty Req	Order Quantity
---------	--------------	--------------	-------------	---------	----------------

## R&R Rollers

1	<b>R104125</b>	116940, 131863, 132639	Roller - Smooth Tubular Steel	1	
---	----------------	------------------------------	-------------------------------	---	--

*Tech Note: Fits Front and Rear:*

*Detail Description: Constructed with a through shaft, this heavy duty roller uses greasable tapered bearings for extended life.:*

2	<b>R1013630</b>		Roller - Smooth UHMW Polyethylene	1	
---	-----------------	--	-----------------------------------	---	--

*Tech Note: Fits Front and Rear:*

*Detail Description: Machined from solid UHMW, this low maintenance roller uses a 1" solid stainless steel shaft and requires no grease. UHMW material prevents build-up of debris.:*

3	<b>R104100</b>	116906, 123266	Roller - Grooved Repairable Steel - 26	1	
---	----------------	-------------------	--	---	--

*Tech Note: Fits Front:*

*Detail Description: Constructed with a through shaft and greasable ball bearings, this roller can be repaired by unscrewing the ends and replacing the series of washers and spacers.:*

4	<b>R1013620</b>	123266	Roller - Grooved UHMW Polyethylene	1	
---	-----------------	--------	------------------------------------	---	--

*Tech Note: Fits Front:*

*Detail Description: Machined from solid UHMW, this low maintenance roller rotates around a 1" solid stainless steel shaft and requires no bearings or grease. Patented groove design and smooth UHMW material prevents build-up of debris.:*

## Overhaul Kits

20	<b>R100137</b>		Overhaul Kit - Roller	0	
----	----------------	--	-----------------------	---	--

*Detail Description: Includes 2 ea.: R3296-15 Locknuts, R302-5 Grease Fittings, R253-122 Seals, R253-117 Seals, R5-4038 Wear Sleeves, R254-78 Bearings & R254-79 Bearing Cups:*

21	<b>R101399</b>		Overhaul Kit - UHMW 2 Pc Roller	1	
----	----------------	--	---------------------------------	---	--

All original equipment manufacturers names and part numbers are used for identification purposes only, and we are in no way implying that our products are original equipment parts. Prices subject to change without notice.



# Replaces Jacobsen Tri-King 1671 Parts

26" Belt Drive Cutting Unit  
Rollers



Item No	R&R Part No.	OEM Part No.	Description	Qty Req	Order Quantity
---------	--------------	--------------	-------------	---------	----------------

*Detail Description: Fits all R&R 2-1/2" - 3-1/2" Dia. Black UHMW Plastic Rollers that do not use ball bearings.. Includes 2 ea.: R1503230 Star Washers, R1503470 Seals, R150333 Thrust Washers, R3296-15 Locknuts, R1503471 Bronze Thrust Washers:*

22	<b>R100138</b>		Overhaul Kit - Roller	1	
----	----------------	--	-----------------------	---	--

*Detail Description: Includes 2 ea.: R3296-15 Locknuts, R253-152 Seals, R253-117 Seals, R5-4038 Wear Sleeves, R254-78 Bearings, R254-79 Bearing Cups, & R302-5 Grease Fittings:*

## Other Parts Available

30	<b>R302-5</b>	302-5, 471214, 471223, 471226	Fitting - Grease	4	
----	---------------	--	------------------	---	--

31	<b>R253-122</b>		Seal	2	
----	-----------------	--	------	---	--

32	<b>R254-79</b>	254-79, 4121175	Cup - Bearing	2	
----	----------------	--------------------	---------------	---	--

*Detail Description: Use R254-79M installation mandrel to properly install race.:*

33	<b>R254-78</b>	254-78, 385174, 4121174, 4135152	Tapered Bearing Cone	2	
----	----------------	---	----------------------	---	--

34	<b>R253-117</b>	253-117, 3004882	Seal - Outer Triple Lip	2	
----	-----------------	---------------------	-------------------------	---	--

35	<b>R5-4038</b>	5-4038	Sleeve - Wear Reel Shaft	2	
----	----------------	--------	--------------------------	---	--

36	<b>R3296-15</b>	3296-15, 367029, 444742	Locknut - 3/4-16 Nylon Jam	2	
----	-----------------	-------------------------------	----------------------------	---	--

37	<b>R1503470</b>		Seal - Inner Wiper	2	
----	-----------------	--	--------------------	---	--

38	<b>R1503230</b>		Washer - Thrust Outer Keyed	2	
----	-----------------	--	-----------------------------	---	--

39	<b>R1503471</b>		Washer - Thrust SAE660 Bronze	2	
----	-----------------	--	-------------------------------	---	--

40	<b>R150333</b>		Washer - Flat Keyed Outer SS	2	
----	----------------	--	------------------------------	---	--

All original equipment manufacturers names and part numbers are used for identification purposes only, and we are in no way implying that our products are original equipment parts. Prices subject to change without notice.



# Replaces Jacobsen Tri-King 1671 Parts

26" Belt Drive Cutting Unit  
Rollers



Item No	R&R Part No.	OEM Part No.	Description	Qty Req	Order Quantity
41	R500534	500534, R500534	Bearing - with Cup	2	
<i>Detail Description: Kit includes: 1 ea R254-78- Bearing Cone &amp; R254-79 Bearing Cone:</i>					
42	R150676	150676	Spacer - 2-3/4 Dia x 1-1/4 L	12	
43	R150673	150673	Washer - 3 Repairable Roller	13	
44	R150678		Spacer - Grooved Roller 3/4	2	
45	R150691		Screw - Set Nyloc 3/8-16 x 3/8	4	
46	R170714	170714, 471240, 471242	Fitting - Pressure Relief	2	
47	R100103		Roller End - Grooved	2	
48	R104102		Shaft - 26 Roller	1	
49	R1013810		Shaft - 1 SS Roller	1	
52	R400182	400182	Bolt - Hex HD 5/16-18 x 5/8	2	
53	R446136	446134, 446136	Washer - Lock 5/16 Zinc	2	
54	R445781	445781	Nut - 5/16-18 Whiz	2	
55	R415559	415559	Screw - Set 5/16-18 x 1	2	
56	R700508		Scraper - 26 Grooved Roller	1	
<i>Tech Note: Fits R&amp;R Roller Only:</i>					
57	R3001706	3001706	Scraper - 26 Grooved Roller	1	
<i>Tech Note: Fits O.E.M. Roller Only:</i>					

All original equipment manufacturers names and part numbers are used for identification purposes only, and we are in no way implying that our products are original equipment parts. Prices subject to change without notice.