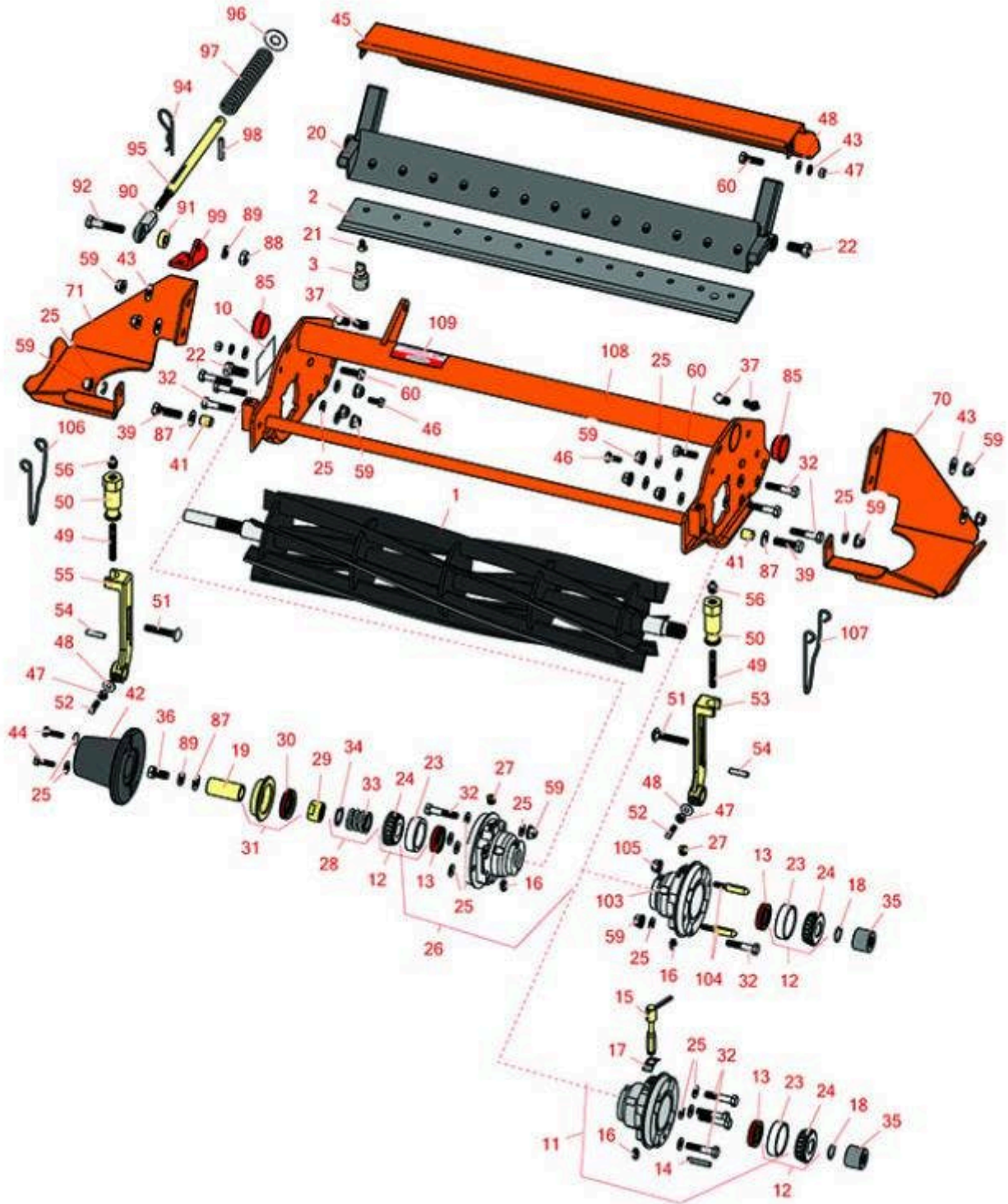




# Replaces Jacobsen LF-135 Parts

5" Reel Units  
Reel & Bedknife



All original equipment manufacturers names and part numbers are used for identification purposes only, and we are in no way implying that our products are original equipment parts. Prices subject to change without notice.



# Replaces Jacobsen LF-135 Parts

5" Reel Units  
Reel & Bedknife



Item No	R&R Part No.	OEM Part No.	Description	Qty Req	Order Quantity
---------	--------------	--------------	-------------	---------	----------------

### R&R Reels, Lifetime Guaranteed

1	R503319	5001095, 5003053, 503319	Reel - 7 Blade LH	3	
1	R503320	5001096, 5003054, 5003064, 503320	Reel - 7 Blade RH	2	
1	R503321	5001097, 503321	Reel - 5 Blade LH	3	
1	R503322	5001098, 503322	Reel - 5 Blade RH	2	

### R&R Bedknives, Lifetime Guaranteed

2	R5003150	5003150	Bedknife - Low Cut	1	
2	R503460	503257, 503460	Bedknife - 22 in 13 Hole	1	

### R&R Razor Tool Steel Bedknives, Lifetime Guaranteed

2	R101523		Bedknife - Razor Tool Steel - 22 High Cut	1	
---	---------	--	---	---	--

### Service Tools

3	R101272T		Bedknife Screw Driver Tool	0	
---	----------	--	----------------------------	---	--

*Tech Note: Easily install and remove bed knife screws with the help of a ratchet. Tool manufactured with hardened alloy steel.:*

### Other Parts Available

10	R1000997	1000997	Decal - Warning	1	
11	R1002564	1002564	Housing - Bearing Motor End	1	

*Tech Note: Includes: R336962, R1002607, R302-5, R254-79, R461397 & R3005841:*

All original equipment manufacturers names and part numbers are used for identification purposes only, and we are in no way implying that our products are original equipment parts. Prices subject to change without notice.



# Replaces Jacobsen LF-135 Parts

5" Reel Units  
Reel & Bedknife



Item No	R&R Part No.	OEM Part No.	Description	Qty Req	Order Quantity
12	<b>R500534</b>	500534, R500534	Bearing - with Cup	1	
13	<b>R336962</b>	336962	Seal	2	
15	<b>R1002607</b>	1001021, 1002607	Pin - Assy Quick Release	1	
16	<b>R302-5</b>	302-5, 471214, 471223, 471226	Fitting - Grease	1	
17	<b>R3005841</b>	3005841	Spring - Vent Cover	1	
18	<b>R458013</b>	458013	Ring - Retaining	1	
19	<b>R367164</b>	367164	Spacer - Reel	1	
20	<b>R220278</b>	121856, 220278, 5000415	Backing Bar - Cast	1	
20	<b>R2000068</b>	2000068	Bed Bar	1	
21	<b>R101272</b>	101272, 3009138, 402578, 800813	Screw - Bedknife 1/4-20 x 1/2	13	
22	<b>R315298</b>	315298	Bolt - Bed Bar	2	
23	<b>R254-79</b>	254-79, 4121175	Cup - Bearing	2	
<i>Tech Note: Use R254-79M installation mandrel to properly install race.:</i>					
24	<b>R254-78</b>	254-78, 385174, 4121174, 4135152	Tapered Bearing Cone	2	

All original equipment manufacturers names and part numbers are used for identification purposes only, and we are in no way implying that our products are original equipment parts. Prices subject to change without notice.



# Replaces Jacobsen LF-135 Parts

5" Reel Units  
Reel & Bedknife



Item No	R&R Part No.	OEM Part No.	Description	Qty Req	Order Quantity
25	<b>R453009</b>	3256-23, 452004, 452006, 452008, 453009	Washer - Flat 5/16 SAE	8	
25	<b>R453011</b>	453011	Washer - Flat 3/8 SAE Y/Zinc	1	
26	<b>R164144</b>	1000480, 163397, 164144, 2000060	Housing - Reel Bearing	1	
<i>Tech Note: Includes R336962 Seal, R302-5 Zerk, R170714 Relief Fitting &amp; R254-79 Cup:</i>					
27	<b>R170714</b>	170714, 471240, 471242	Fitting - Pressure Relief	1	
28	<b>R5002151</b>	5002151	Hardware Kit - Spring/Washer	1	
<i>Tech Note: Includes 1 ea: R304745 Washer, R363047 Spring:</i>					
29	<b>R364900</b>	364900	Nut - Reel Tension	1	
30	<b>R337677</b>	315257, 337677	Seal - Oil	1	
31	<b>R363814</b>	163892, 363814	Spacer - Seal	1	
32	<b>R400192</b>	400192	Bolt - Hex HD 5/16-18 x 1-1/2	8	
33	<b>R363047</b>	348846, 363047	Spring - Reel	1	
34	<b>R304745</b>	304745	Washer - Reel	1	
35	<b>R3001720</b>	3001720	Coupler - Iron - Hyd Motor	1	
36	<b>R400294</b>	400294	Screw - 3/8 24 x 3/4 Hex C/Zinc	1	
37	<b>R412506</b>	412503, 412506	Screw - Bed Bar Adjusting	4	
39	<b>R400264</b>	400264	Bolt - Hex HD 3/8-16 x 1-1/4	2	

All original equipment manufacturers names and part numbers are used for identification purposes only, and we are in no way implying that our products are original equipment parts. Prices subject to change without notice.



# Replaces Jacobsen LF-135 Parts

5" Reel Units  
Reel & Bedknife



Item No	R&R Part No.	OEM Part No.	Description	Qty Req	Order Quantity
41	<b>R345510</b>	345510	Spacer	2	
42	<b>R2000065</b>	2000065	Weight - Counter	1	
43	<b>R3253-3</b>	3253-3, 446128, 446130	Washer - Lock 1/4	4	
44	<b>R321-5</b>	321-5, 400110	Bolt - Hex HD 1/4-20 x 7/8	2	
45	<b>R390950</b>	126724, 2810043, 390950	Shield - Grass	1	
46	<b>R400106</b>	400106	Bolt - Hex HD 1/4-20 x 5/8	2	
47	<b>R443102</b>	443102	Nut - 1/4-20 Yellow Zinc	4	
48	<b>R453023</b>	453023	Washer - Flat 1/4	2	
49	<b>R343616</b>	343616, 443102	Stud	2	
50	<b>R365009</b>	3005692, 365009, 365170, 441674	Knob - Adjusting Roller	2	
51	<b>R441674</b>	441674	Screw - 5/16-18 x 1-3/4 Carriage	2	
52	<b>R352737</b>	352737	Screw - Set 1/4 x 7/8 Sq Head	2	
53	<b>R153980</b>	153980, 3008438	Bracket - Front Roller	2	
54	<b>R461256</b>	461256	Pin - 1/4 x 1	2	
55	<b>R153979</b>	153979, 3008439	Bracket - Front Roller	2	
56	<b>R471219</b>	366852, 471219	Zerk - Grease	2	
59	<b>R445795</b>	445795	Nut - 5/16-18 Flanged	12	

All original equipment manufacturers names and part numbers are used for identification purposes only, and we are in no way implying that our products are original equipment parts. Prices subject to change without notice.



# Replaces Jacobsen LF-135 Parts

5" Reel Units  
Reel & Bedknife



Item No	R&R Part No.	OEM Part No.	Description	Qty Req	Order Quantity
60	<b>R322-5</b>	400188	Bolt - Hex HD 5/16-18 x 1	4	
70	<b>R3008199</b>	3008199	Skid - Motor LH Front Reel	1	
71	<b>R3008200</b>	3008200	Skid - Motor RH Front Reel	1	
85	<b>R285-14</b>		Plug - Pipe Frame	2	
87	<b>R17-1710</b>	452008	Washer - Flat 3/8 Yellow USS	3	
88	<b>R443110</b>	306562, 443110, 444762	Nut - 3/8-16 Hex	1	
89	<b>R3254-6</b>	3254-6, 446140, 446142	Washer - Lock 3/8	1	
90	<b>R366974</b>	366974	Bearing - Rod End	1	
91	<b>R352435</b>	352435	Spacer	1	
92	<b>R400266</b>	400266	Bolt - Hex HD 3/8-16 x 1-1/2	1	
92	<b>R400268</b>	400268	Bolt - Hex HD 3/8-16 x 1-3/4	1	
94	<b>R460312</b>	460312	Pin - Hair Cotter	1	
95	<b>R3008593</b>	3008593	Shaft - Down Pressure	1	
96	<b>R453017</b>	452012, 453017	Washer - Flat 1/2	1	
97	<b>R311870</b>	311870	Spring - Compression	1	
98	<b>R461397</b>	461397	Pin - Roll 1/4 x 1-1/4	1	
99	<b>R3008601</b>	3008601	Bracket - Spring Holddown	1	
103	<b>R1004786</b>	1004786	Housing - Bearing Quick Clip	1	
<i>Tech Note: Includes: R336962, R302-5, R254-79, R3010296, R32152-4 &amp; R170714:</i>					
104	<b>R3010296</b>	3010296	Pin - Motor Mounting	2	

All original equipment manufacturers names and part numbers are used for identification purposes only, and we are in no way implying that our products are original equipment parts. Prices subject to change without notice.



# Replaces Jacobsen LF-135 Parts

5" Reel Units

Reel & Bedknife



Item No	R&R Part No.	OEM Part No.	Description	Qty Req	Order Quantity
105	<b>R32152-4</b>	32152-4, 444708	Locknut - 1/4-20 All Metal	2	
106	<b>R2810165</b>	2810165, 2810166, 3010236, 3010636	Clip - Spring Motor	1	
107	<b>R2810166</b>	2810166, 3010637	Clip - Spring Motor	1	
108	<b>R5003087</b>	5003087	Frame - 5 Reel	1	
109	<b>R354083</b>	354083, 361877, 4127335	Decal - Danger	2	

All original equipment manufacturers names and part numbers are used for identification purposes only, and we are in no way implying that our products are original equipment parts. Prices subject to change without notice.