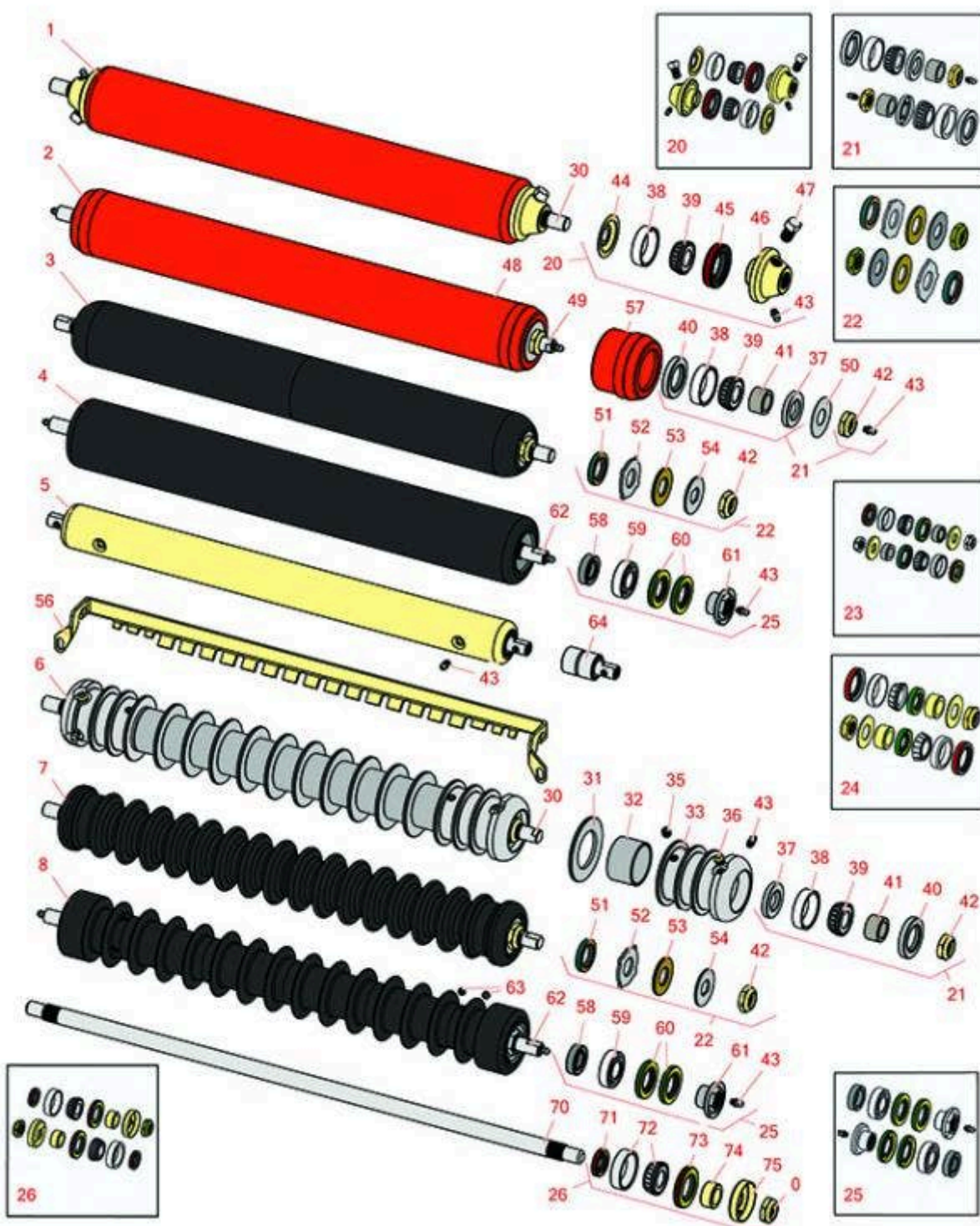




Replaces Jacobsen LF-100 Parts

Cutting Unit
Front Rollers



All original equipment manufacturers names and part numbers are used for identification purposes only, and we are in no way implying that our products are original equipment parts. Prices subject to change without notice.



Replaces Jacobsen LF-100 Parts

Cutting Unit
Front Rollers



Item No	R&R Part No.	OEM Part No.	Description	Qty Req	Order Quantity
---------	--------------	--------------	-------------	---------	----------------

R&R Front Rollers

1	R700530	132202	Roller - Smooth Tubular Steel	0	
<i>Detail Description: Constructed with a through shaft, this heavy-duty roller uses greasable tapered bearings for extended life.:</i>					
2	R700535		Roller - Smooth Tubular Steel	0	
<i>Detail Description: Constructed with a through shaft, this heavy duty roller uses greasable tapered bearings for extended life.:</i>					
3	R1013610		Roller - Smooth UHMW Polyethylene	0	
<i>Detail Description: Machined from solid UHMW, this low maintenance roller uses a 1" solid stainless steel shaft and requires no grease. UHMW material prevents build-up of debris.:</i>					
4	R1013675		Roller - Fusion Smooth UHMW Polyethylene	0	
<i>Detail Description: Machined from solid UHMW plastic that prevents build-up of debris. This roller turns on precision stainless ball bearings.:</i>					
5	R68597	68597	Roller - Smooth Solid Steel	0	
<i>Detail Description: Machined from solid steel, this heavy weight roller uses greasable "water-pump" style bearings.:</i>					
6	R100100	123268	Roller - Grooved Repairable Steel	0	
<i>Detail Description: Constructed with a through shaft and greasable ball bearings, this roller can be repaired by unscrewing the ends and replacing the series of washers and spacers.:</i>					
7	R1013602		Roller - Grooved UHMW Polyethylene	0	
<i>Detail Description: Machined from solid UHMW, this low maintenance roller rotates around a 1" solid stainless steel shaft and requires no bearings or grease. Patented groove design and smooth UHMW material prevents build-up of debris.:</i>					
8	R1013670		Roller - Grooved UHMW Polyethylene	0	
<i>Detail Description: Machined from solid UHMW plastic that prevents build-up of debris. This roller has a patented deep groove design and turns on precision stainless ball bearings.:</i>					

All original equipment manufacturers names and part numbers are used for identification purposes only, and we are in no way implying that our products are original equipment parts. Prices subject to change without notice.



Replaces Jacobsen LF-100 Parts

Cutting Unit
Front Rollers



Item No	R&R Part No.	OEM Part No.	Description	Qty Req	Order Quantity
---------	--------------	--------------	-------------	---------	----------------

Overhaul Kits

20	R700505		Conversion Kit - Roller	0	
<i>Detail Description: Includes: 2 each: R254-78 Bearing Cones, R254-79 Bearing Cups, R328062 Seals, R412063 Square Head Set Screws, R700501 Roller Ends & R700502 Grease Retainers.:</i>					
21	R100137		Overhaul Kit - Roller	0	
<i>Detail Description: Includes 2 ea.: R3296-15 Locknuts, R302-5 Grease Fittings, R253-122 Seals, R253-117 Seals, R5-4038 Wear Sleeves, R254-78 Bearings & R254-79 Bearing Cups:</i>					
22	R101399		Overhaul Kit - UHMW 2 Pc Roller	1	
<i>Detail Description: Fits all R&R 2-1/2" - 3-1/2" Dia. Black UHMW Plastic Rollers that do not use ball bearings.. Includes 2 ea.: R1503230 Star Washers, R1503470 Seals, R150333 Thrust Washers, R3296-15 Locknuts, R1503471 Bronze Thrust Washers:</i>					
23	R100139		Overhaul Kit - Roller	0	
<i>Tech Note: Fits Jacobsen O.E.M. rollers 132640 and 1000384:</i>					
<i>Detail Description: Includes 2 ea.: R254-67 Bearing Cups, R254-68 Bearing Cones, R337593 Seals, R253-152 Seals R3001762 Wear Sleeves, R3000698 Washers & R445718 Locknuts:</i>					
24	R100134		Overhaul Kit - Roller	0	
<i>Detail Description: Fits Jacobsen 132202 3" x 22" Solid Roller Only. Includes 2 ea.: R3296-15 Locknuts, R337924 Seals, R338745 Seals, R365210 Washers, R366168 Wear Sleeves, R503378 Cup & Cone Bearings:</i>					
25	R114-5430	114-5430	Overhaul Kit - Roller	0	
<i>Detail Description: Includes 4 ea.: R112-7494 Seals; 2 ea.: R302-5 Grease Zerks, R114-3717 Seals, R112-5290 Bearings & R114-3745 Locknuts:</i>					
26	R100133		Overhaul Kit - Roller	1	
<i>Detail Description: Includes: 2ea: R254-78 Bearings, R254-79 Bearing Cups, R3296-15 Locknuts, R338645 Cup Deflectors, R338646 Seals, R338647 Seals, & R366168 Wear Sleeves:</i>					
Other Parts Available					
30	R100102	3003416, 366589	Shaft - Roller	1	

All original equipment manufacturers names and part numbers are used for identification purposes only, and we are in no way implying that our products are original equipment parts. Prices subject to change without notice.



Replaces Jacobsen LF-100 Parts

Cutting Unit
Front Rollers



Item No	R&R Part No.	OEM Part No.	Description	Qty Req	Order Quantity
31	R150673	150673	Washer - 3 Repairable Roller	11	
32	R150676	150676	Spacer - 2-3/4 Dia x 1-1/4 L	10	
32	R150671		Spacer - 2 3/4 / 3 Rollers 13/16 L	0	
33	R100103		Roller End - Grooved	2	
35	R150691		Screw - Set Nyloc 3/8-16 x 3/8	4	
36	R170714	170714, 471240, 471242	Fitting - Pressure Relief	2	
37	R253-122		Seal	2	
38	R254-79	254-79, 4121175	Cup - Bearing	2	
<i>Detail Description: Use R254-79M installation mandrel to properly install race.:</i>					
39	R254-78	254-78, 385174, 4121174, 4135152	Tapered Bearing Cone	2	
40	R253-117	253-117, 3004882	Seal - Outer Triple Lip	2	
41	R5-4038	5-4038	Sleeve - Wear Reel Shaft	2	
42	R3296-15	3296-15, 367029, 444742	Locknut - 3/4-16 Nylon Jam	2	
43	R302-5	302-5, 471214, 471223, 471226	Fitting - Grease	2	
44	R700502	700502	Retainer - Grease	2	
45	R328062	328062	Seal - Roller	2	
46	R700501	700501	Roller End - Regreasable	2	

All original equipment manufacturers names and part numbers are used for identification purposes only, and we are in no way implying that our products are original equipment parts. Prices subject to change without notice.



Replaces Jacobsen LF-100 Parts

Cutting Unit
Front Rollers



Item No	R&R Part No.	OEM Part No.	Description	Qty Req	Order Quantity
47	R412063	412063	Screw - Sq. HD. Set	2	
48	R700536		Tube - Assy Solid Roller	1	
49	R700538	700538	Shaft - Fits R700535	1	
50	R150504	150504	Washer	2	
51	R1503470		Seal - Inner Wiper	2	
52	R1503230		Washer - Thrust Outer Keyed	2	
53	R1503471		Washer - Thrust SAE660 Bronze	2	
54	R150333		Washer - Flat Keyed Outer SS	2	
56	R100110	100110, 391202	Scraper - Fits R100100	1	
<i>Detail Description: Fits R100100 3" Grooved Roller - 1-1/4" Spacing:</i>					
56	R100111	100111	Scraper - Fits 3/4 Spacing	1	
56	R391202	391202	Scraper - Fits OEM Roller	1	
57	R170308		Roller End - Solid 3	2	
58	R114-3717		Seal	2	
59	R112-5290		Bearing - Stainless	2	
60	R112-7494		Seal	4	
61	R114-3745		Locknut - Bearing - Stainless	2	
62	R1013671		Shaft - Roller	1	
63	R300106		Screw - Set 5/16-18 x 1/4	4	
64	R101482	101482	Bearing - Rear Machined Roller	2	
Replaces Jacobsen 30" 132640 Solid Roller & 1000384 Grooved Roller Parts					
70	R366587	366587	Shaft - Solid 30 Roller	1	

All original equipment manufacturers names and part numbers are used for identification purposes only, and we are in no way implying that our products are original equipment parts. Prices subject to change without notice.



Replaces Jacobsen LF-100 Parts

Cutting Unit
Front Rollers



Item No	R&R Part No.	OEM Part No.	Description	Qty Req	Order Quantity
70	R366588	366588	Shaft - 26 Roller	1	
72	R500534	500534, R500534	Bearing - with Cup	2	
<i>Detail Description: Kit includes: 1 ea R254-78- Bearing Cone & R254-79 Bearing Cone:</i>					
73	R338646	338646	Seal - Outer Roller	2	
71	R338647	338647	Seal - Inner Roller	2	
74	R366168	336168, 366168	Sleeve - Wear Hardened	2	
75	R338645	338645	Deflector - Cup	2	

All original equipment manufacturers names and part numbers are used for identification purposes only, and we are in no way implying that our products are original equipment parts. Prices subject to change without notice.