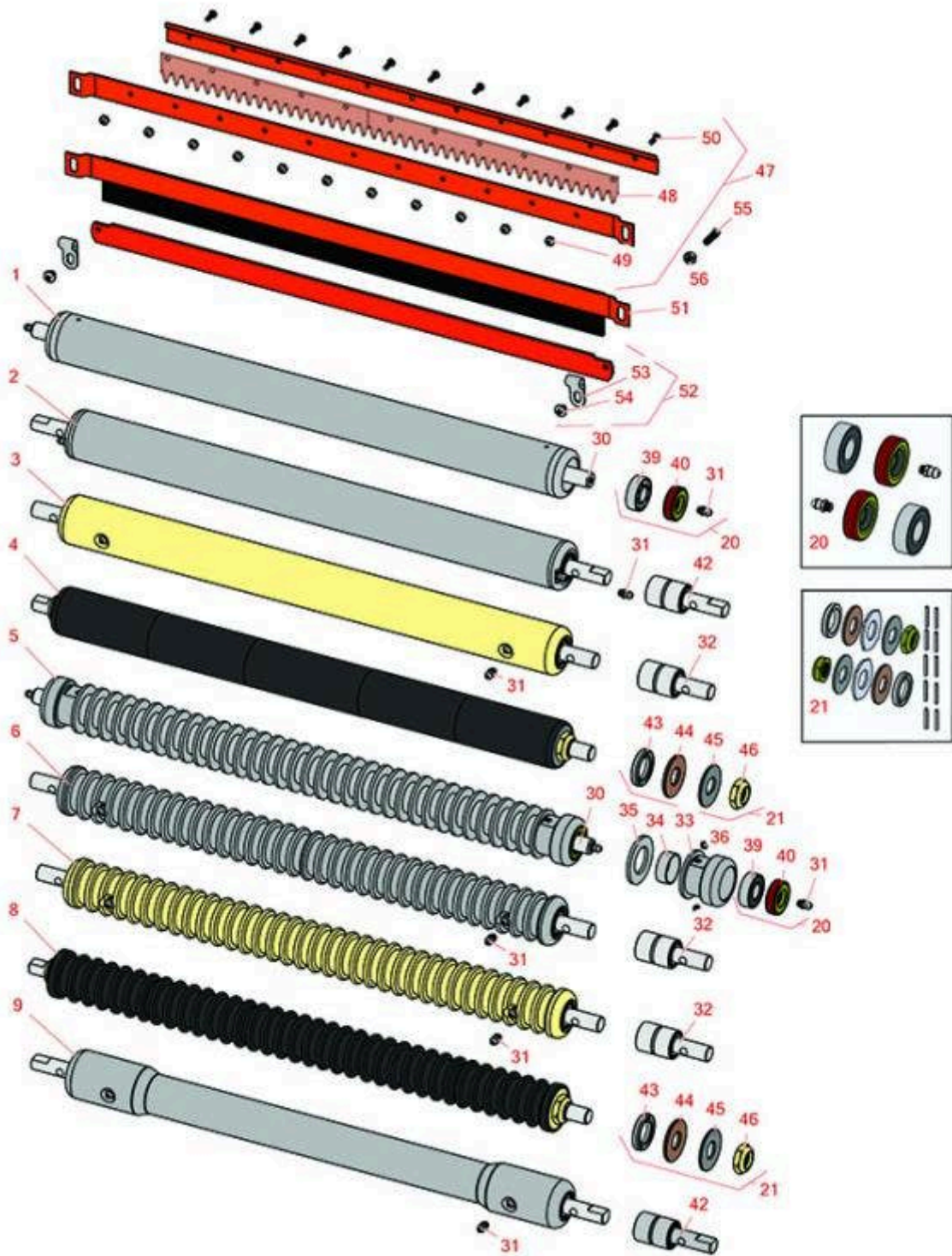




# Replaces Jacobsen G-Plex III Parts

Cutting Unit  
Front Rollers



All original equipment manufacturers names and part numbers are used for identification purposes only, and we are in no way implying that our products are original equipment parts. Prices subject to change without notice.



# Replaces Jacobsen G-Plex III Parts

Cutting Unit  
Front Rollers



Item No	R&R Part No.	OEM Part No.	Description	Qty Req	Order Quantity
---------	--------------	--------------	-------------	---------	----------------

## R&R Front Rollers

1	<b>R158776</b>	158776, 162917	Roller - Smooth Tubular Steel	0	
<i>Tech Note: Constructed with a through shaft and greasable ball bearings.:</i>					
2	<b>R52-3120</b>		Roller - Smooth Tubular Steel	0	
<i>Tech Note: Constructed with "water-pump" style bearings.:</i>					
3	<b>R101126</b>		Roller - Smooth Solid Steel	0	
<i>Tech Note: Machined from solid steel, this heavy weight roller uses greasable "water-pump" style bearings.:</i>					
4	<b>R101336</b>		Roller - Smooth UHMW Polyethylene	0	
<i>Tech Note: Machined from solid UHMW, this low maintenance roller uses a 1" solid stainless steel shaft and requires no grease. UHMW material prevents build-up of debris.:</i>					
5	<b>R68527R</b>		Roller - Grooved Repairable Steel	0	
<i>Tech Note: Constructed with a through shaft and greasable ball bearings, this roller can be repaired by unscrewing the ends and replacing the series of washers and spacers.:</i>					
6	<b>R101123</b>		Roller - Grooved Machined Solid Aluminum	0	
<i>Tech Note: Machined from solid aluminum, this lightweight roller uses greasable "water-pump" style bearings.:</i>					
7	<b>R68577</b>	68577	Roller - Grooved Machined Solid Steel	0	
<i>Tech Note: Machined from solid steel, this heavyweight roller uses greasable "water-pump" style bearings.:</i>					
8	<b>R101330</b>		Roller - Grooved UHMW Polyethylene	0	
<i>Tech Note: Machined from solid UHMW, this low maintenance roller rotates around a 1" solid stainless steel shaft and requires no bearings or grease. Patented groove design and smooth UHMW material prevents build-up of debris.:</i>					
9	<b>R101122</b>		Roller - Swaged Machined Aluminum	0	

All original equipment manufacturers names and part numbers are used for identification purposes only, and we are in no way implying that our products are original equipment parts. Prices subject to change without notice.



# Replaces Jacobsen G-Plex III Parts

Cutting Unit  
Front Rollers



Item No	R&R Part No.	OEM Part No.	Description	Qty Req	Order Quantity
---------	--------------	--------------	-------------	---------	----------------

*Tech Note: Constructed with "water-pump" style bearings, this steel tubular roller contacts the ground only on the outer 2-7/8" of the roller.:*

## Overhaul Kits

20	<b>R100130</b>	100130	Overhaul Kit - Roller	0	
----	----------------	--------	-----------------------	---	--

*Tech Note: Includes 2 ea.: R302-5 Grease Fittings, R303558 Bearings, & R305115 Seals:*

21	<b>R101395</b>	100139, 101395	Overhaul Kit - UHMW Roller	0	
----	----------------	-------------------	----------------------------	---	--

*Tech Note: Fits all R&R 2" Dia. Black UHMW Polyethylene Rollers. Includes 10 ea.: R150322 Roll Pins; 2 ea.: R3296-15 Locknuts, R150347T Teflon Seals, R150333 Thrust Washers, & R150334A Bronze Thrust Washers:*

## Other Parts Available

30	<b>R102030</b>	102030	Shaft - Front Roller	1	
----	----------------	--------	----------------------	---	--

31	<b>R302-5</b>	302-5, 471214, 471223, 471226	Fitting - Grease	2	
----	---------------	--	------------------	---	--

32	<b>R101481</b>	101481, 311839	Bearing - Roller	2	
----	----------------	-------------------	------------------	---	--

*Tech Note: Fits R&R Machined Grooved Roller & Smooth (19 lbs) Roller:*

33	<b>R150650</b>		Roller End - 2 Repairable	2	
----	----------------	--	---------------------------	---	--

34	<b>R150651</b>		Spacer - 2-3/8 Roller	34	
----	----------------	--	-----------------------	----	--

35	<b>R150652</b>	150652, 325262	Washer - 2 Roller	33	
----	----------------	-------------------	-------------------	----	--

36	<b>R150690</b>	150690, 415509	Screw - Set 1/4-20 x 1/4	4	
----	----------------	-------------------	--------------------------	---	--

39	<b>R303558</b>	303558	Bearing - Roller	2	
----	----------------	--------	------------------	---	--

40	<b>R305115</b>	305115	Seal - Roller	2	
----	----------------	--------	---------------	---	--

42	<b>R21-8430</b>		Bearing - Roller	2	
----	-----------------	--	------------------	---	--

All original equipment manufacturers names and part numbers are used for identification purposes only, and we are in no way implying that our products are original equipment parts. Prices subject to change without notice.



# Replaces Jacobsen G-Plex III Parts

Cutting Unit  
Front Rollers



Item No	R&R Part No.	OEM Part No.	Description	Qty Req	Order Quantity
43	<b>R150347T</b>		Seal - Nonstick Lip	2	
44	<b>R150334A</b>		Washer - Thrust SAE660 Bronze	2	
45	<b>R150333</b>		Washer - Flat Keyed Outer SS	2	
46	<b>R3296-15</b>	3296-15, 367029, 444742	Locknut - 3/4-16 Nylon Jam	2	
47	<b>R129914</b>		Comb - Assy	1	
48	<b>R8-2530</b>		Comb - Urethane	1	
49	<b>R3296-9S</b>		Nut - Hex Comb	11	
50	<b>R3249-3</b>		Screw - Comb	11	
51	<b>R129913</b>	129913	Brush Assy	1	
52	<b>R102024</b>	102024	Scraper - Solid Roller	1	
53	<b>R303159</b>	303159	Clip - Roller Scraper	2	
54	<b>R407586</b>	407586	Screw - 1/4-20 x 1/4 Pan HD	2	
55	<b>R352737</b>	352737	Screw - Set 1/4 x 7/8 Sq Head	2	
56	<b>R443102</b>	443102	Nut - 1/4-20 Yellow Zinc	4	

All original equipment manufacturers names and part numbers are used for identification purposes only, and we are in no way implying that our products are original equipment parts. Prices subject to change without notice.