

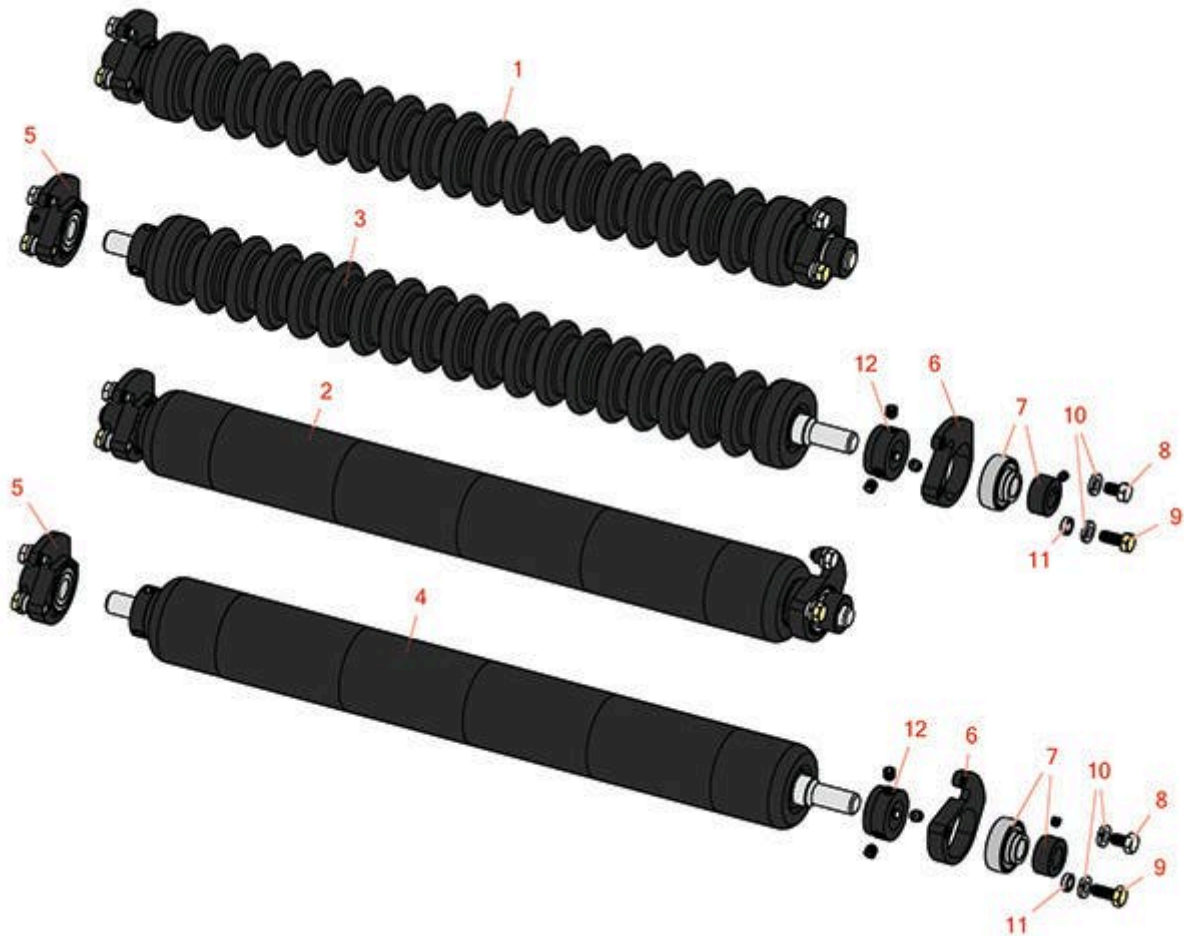


# Replaces Jacobsen Greens King V & VI

## Parts

Cutting Unit

Minuteman Rear Roller System



All original equipment manufacturers names and part numbers are used for identification purposes only, and we are in no way implying that our products are original equipment parts. Prices subject to change without notice.



# Replaces Jacobsen Greens King V & VI

## Parts

Cutting Unit

Minuteman Rear Roller System



Item No	R&R Part No.	OEM Part No.	Description	Qty Req	Order Quantity
---------	--------------	--------------	-------------	---------	----------------

### Complete Minuteman Roller Systems

1	<b>RMJ1002</b>		Minuteman Rear Grooved Roller System	0
---	----------------	--	--------------------------------------	---

*Tech Note: Complete roller systems include roller, two brackets with bearings and mounting hardware.:*

2	<b>RMJ1003</b>		Minuteman Rear Smooth Roller System	0
---	----------------	--	-------------------------------------	---

*Tech Note: Complete roller systems include roller, two brackets with bearings and mounting hardware.:*

### Minuteman Rollers Only

3	<b>RM515</b>		Minuteman Grooved Roller Only	0
---	--------------	--	-------------------------------	---

*Tech Note: Use with Minuteman Roller Bracket System Only:*

4	<b>RM516</b>		Minuteman Smooth Roller Only	0
---	--------------	--	------------------------------	---

*Tech Note: Use with Minuteman Rollers Bracket System Only:*

### Other Parts Available

5	<b>RJ131</b>		Bracket - Rear LH	0
---	--------------	--	-------------------	---

6	<b>RJ132</b>		Bracket - Rear RH	0
---	--------------	--	-------------------	---

7	<b>RMMB157</b>		Bearing w/Locking Collar	0
---	----------------	--	--------------------------	---

8	<b>R322-1</b>		Bolt - Hex HD 5/16-18 x 1/2	0
---	---------------	--	-----------------------------	---

9	<b>R322-3</b>		Bolt - Hex HD 5/16-18 x 3/4	0
---	---------------	--	-----------------------------	---

10	<b>R446136</b>	446134, 446136	Washer - Lock 5/16 Zinc	0
----	----------------	-------------------	-------------------------	---

11	<b>RMM609</b>		Bushing - Aluminum Spacer	0
----	---------------	--	---------------------------	---

12	<b>RMM3</b>		End Hub - 7/8 ID	0
----	-------------	--	------------------	---

All original equipment manufacturers names and part numbers are used for identification purposes only, and we are in no way implying that our products are original equipment parts. Prices subject to change without notice.