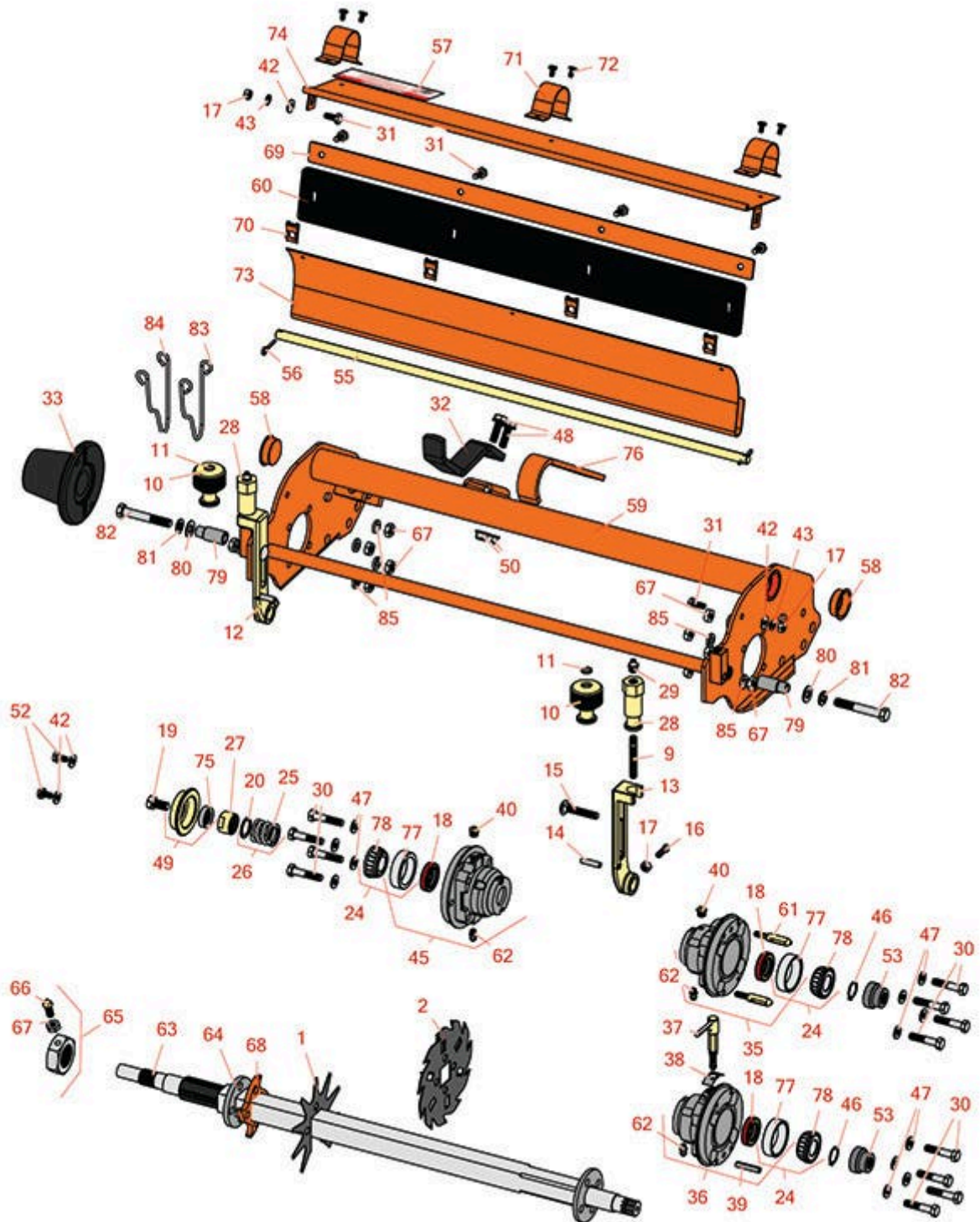




Replaces Jacobsen Greens King V & VI

Parts

Verti-Cut Unit
Reel & Frame



All original equipment manufacturers names and part numbers are used for identification purposes only, and we are in no way implying that our products are original equipment parts. Prices subject to change without notice.



Replaces Jacobsen Greens King V & VI

Parts

Verti-Cut Unit
Reel & Frame



Item No	R&R Part No.	OEM Part No.	Description	Qty Req	Order Quantity
Verti-Cut Blades					
1	R335449	335449	Blade - Vertical Slotted	26	
2	R101109C		Verti-Cut Blade - Carbide Tipped 1mm	26	
2	R101209C		Verti-Cut Blade - Carbide Tipped 2mm	26	
Other Parts Available					
9	R343616	343616, 443102	Stud	2	
10	R343617	343617	Knob - Adjusting	2	
11	R472518	472518	Plug - Adjusting Knob	2	
12	R153980	153980, 3008438	Bracket - Front Roller	1	
13	R153979	153979, 3008439	Bracket - Front Roller	1	
14	R461256	461256	Pin - 1/4 x 1	2	
15	R441674	441674	Screw - 5/16-18 x 1-3/4 Carriage	2	
16	R352737	352737	Screw - Set 1/4 x 7/8 Sq Head	2	
17	R443102	443102	Nut - 1/4-20 Yellow Zinc	2	
18	R336962	336962	Seal	2	
19	R400294	400294	Screw - 3/8 24 x 3/4 Hex C/Zinc	1	
20	R304745	304745	Washer - Reel	1	
24	R500534	500534, R500534	Bearing - with Cup	2	
25	R363047	348846, 363047	Spring - Reel	1	

All original equipment manufacturers names and part numbers are used for identification purposes only, and we are in no way implying that our products are original equipment parts. Prices subject to change without notice.



Replaces Jacobsen Greens King V & VI

Parts

Verti-Cut Unit
Reel & Frame



Item No	R&R Part No.	OEM Part No.	Description	Qty Req	Order Quantity
26	R5002151	5002151	Hardware Kit - Spring/Washer	1	
<i>Tech Note: Includes 1 ea: R304745 Washer, R363047 Spring:</i>					
27	R364900	364900	Nut - Reel Tension	1	
28	R365009	3005692, 365009, 365170, 441674	Knob - Adjusting Roller	2	
29	R471219	366852, 471219	Zerk - Grease	2	
30	R400192	400192	Bolt - Hex HD 5/16-18 x 1-1/2	8	
31	R400106	400106	Bolt - Hex HD 1/4-20 x 5/8	6	
32	R3010293	3010293	Stop - Mower	1	
33	R2000065	2000065	Weight - Counter	1	
35	R1004786	1004786	Housing - Bearing Quick Clip	1	
<i>Tech Note: Includes: R336962, R302-5, R254-79, R3010296, R32152-4 & R170714:</i>					
36	R1002564	1002564	Housing - Bearing Motor End	1	
<i>Tech Note: Includes: R336962, R1002607, R302-5, R254-79, R461397 & R3005841:</i>					
37	R1002607	1001021, 1002607	Pin - Assy Quick Release	1	
38	R3005841	3005841	Spring - Vent Cover	1	
39	R461397	461397	Pin - Roll 1/4 x 1-1/4	1	
40	R170714	170714, 471240, 471242	Fitting - Pressure Relief	2	
42	R453023	453023	Washer - Flat 1/4	4	

All original equipment manufacturers names and part numbers are used for identification purposes only, and we are in no way implying that our products are original equipment parts. Prices subject to change without notice.



Replaces Jacobsen Greens King V & VI

Parts

Verti-Cut Unit
Reel & Frame



Item No	R&R Part No.	OEM Part No.	Description	Qty Req	Order Quantity
43	R3253-3	3253-3, 446128, 446130	Washer - Lock 1/4	4	
45	R164144	1000480, 163397, 164144, 2000060	Housing - Reel Bearing	1	
<i>Tech Note: Includes R336962 Seal, R302-5 Zerk, R170714 Relief Fitting & R254-79 Cup:</i>					
45	R164146	163679, 164146	Housing - Reel Bearing - Motor End	1	
<i>Tech Note: Includes: 1 ea: R170714 Fitting, R254-79 Cup, R302-5 Fitting & R336962 Seal:</i>					
46	R458013	458013	Ring - Retaining	1	
47	R453009	3256-23, 452004, 452006, 452008, 453009	Washer - Flat 5/16 SAE	4	
48	R403751	403751	Bolt - Serrated Washer HD	2	
49	R1003467	1001102, 1003467	Seal - Spacer Assy	1	
50	R445722	445722	Nut - Serrated Washer	2	
52	R400104	400104	Bolt - Hex HD 1/4-20 x 1/2	2	
53	R4247911	162567, 337370, 4247911	Coupling - Hyd Motor - Glass Filled	1	
53	R3001720	3001720	Coupler - Iron - Hyd Motor	1	
55	R351521	351521	Rod - V-Cut Grass Shield	1	
56	R460026	460026	Pin - Cotter 1/8 x 3/4	2	

All original equipment manufacturers names and part numbers are used for identification purposes only, and we are in no way implying that our products are original equipment parts. Prices subject to change without notice.



Replaces Jacobsen Greens King V & VI

Parts

Verti-Cut Unit
Reel & Frame



Item No	R&R Part No.	OEM Part No.	Description	Qty Req	Order Quantity
57	R354083	354083, 361877, 4127335	Decal - Danger	1	
58	R285-14		Plug - Pipe Frame	2	
59	R122685	119245, 122685, 503325	Frame	1	
60	R351522	351522	Scraper - Rubber V-Cut	1	
61	R3010296	3010296	Pin - Motor Mounting	2	
62	R302-5	302-5, 471214, 471223, 471226	Fitting - Grease	2	
63	R131161	131161	Shaft - 22 in Vertical Mower	1	
64	R352221	352221	Spacer - Nylon V-Cut Shaft	76	
65	R352437	352437	Nut - V-Cut Shaft	1	
66	R412017	412017	Screw - Sq. HD Set	1	
67	R443106	443106	Nut - 5/16-18 Y/Zinc Plated	1	
69	R351526	351526	Retainer - Scraper	1	
70	R445260	445260	Nut - 1/4-20 Tinnerman	4	
71	R351520	351520	Clip - V-Cut Shield	3	
72	R409020	409020	Screw - NO.10 x 3/8 Slotted	6	
73	R335214	335214	Shield - Rear Grass	1	
74	R158823	158823	Shield - Front Grass V-Cut	1	
75	R315257	315257	Seal	1	

All original equipment manufacturers names and part numbers are used for identification purposes only, and we are in no way implying that our products are original equipment parts. Prices subject to change without notice.



Replaces Jacobsen Greens King V & VI

Parts

Verti-Cut Unit
Reel & Frame



Item No	R&R Part No.	OEM Part No.	Description	Qty Req	Order Quantity
76	R354928	354928	Stop - Mower	1	
77	R254-79	254-79, 4121175	Cup - Bearing	2	
<i>Tech Note: Use R254-79M installation mandrel to properly install race.:</i>					
78	R254-78	254-78, 385174, 4121174, 4135152	Tapered Bearing Cone	2	
79	R101525	101525	Spacer - Mower Mounting Assy	2	
80	R453011	453011	Washer - Flat 3/8 SAE Y/Zinc	2	
81	R3254-6	3254-6, 446140, 446142	Washer - Lock 3/8	2	
82	R101526	101526	Bolt - Hex HD 3/8-16 x 2-1/2 GR5	2	
83	R2810165	2810165, 2810166, 3010236, 3010636	Clip - Spring Motor	1	
84	R2810166	2810166, 3010637	Clip - Spring Motor	1	
85	R446136	446134, 446136	Washer - Lock 5/16 Zinc	10	

All original equipment manufacturers names and part numbers are used for identification purposes only, and we are in no way implying that our products are original equipment parts. Prices subject to change without notice.