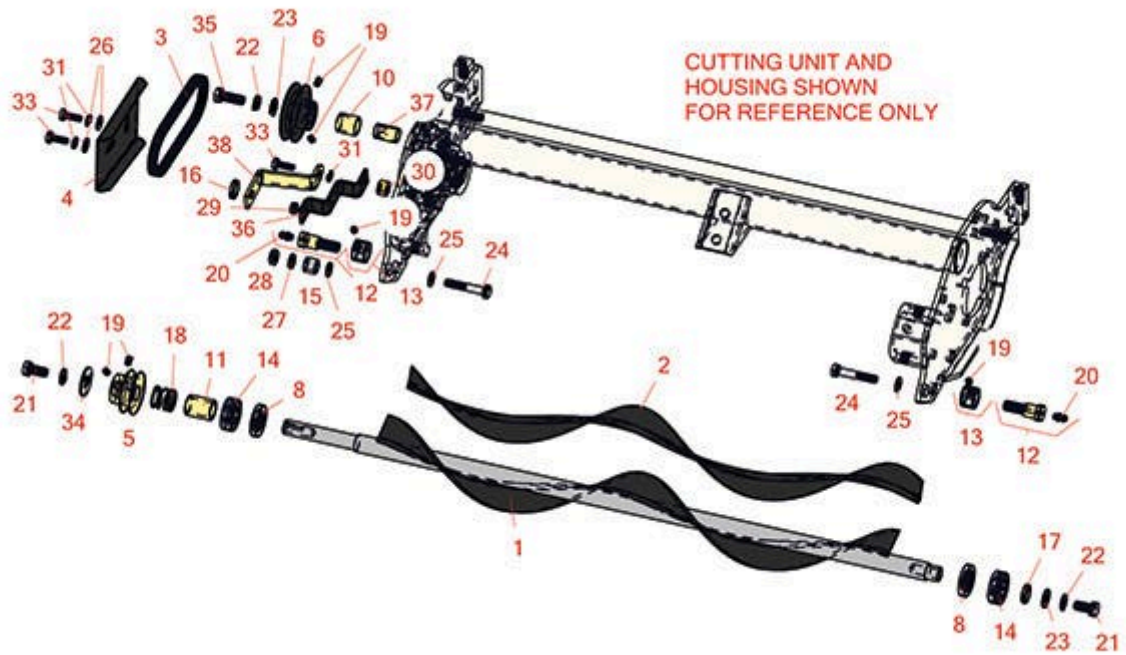




# Replaces Jacobsen GP400 Parts

Cutting Unit  
Rear Brush



All original equipment manufacturers names and part numbers are used for identification purposes only, and we are in no way implying that our products are original equipment parts. Prices subject to change without notice.



# Replaces Jacobsen GP400 Parts

Cutting Unit

Rear Brush



Item No	R&R Part No.	OEM Part No.	Description	Qty Req	Order Quantity
1	<b>R132216</b>	132216, 5002463	Brush - Spiral w/Shaft	1	
2	<b>R500775B</b>	340780	Brush - Spiral Fits R500775	1	
3	<b>R840958</b>	364120, 840958	Belt - Spiral Brush	1	
4	<b>R5001067</b>	5001067	Shield - Belt	1	
5	<b>R340836</b>	340836	Pulley - Spiral Brush Shaft	1	
6	<b>R338758</b>	338758	Pulley - 5/8 Reel Shaft End	1	
8	<b>R338763</b>	338763	Seal	2	
10	<b>R365295</b>	365295	Spacer - .840 Long	1	
11	<b>R365294</b>	365294	Spacer - 1-1/8 Long	1	
12	<b>R1002228</b>	1002228	Bolt - Roller	2	
13	<b>R3008039</b>	3008039	Nut - Eccentric Adjusting	2	
14	<b>R365229</b>	365229	Bearing	2	
15	<b>R3005970</b>	3005970	Spacer	1	
16	<b>R3005971</b>	3005971	Spacer	1	
17	<b>R365293</b>	365293	Spacer - .140 Long	1	
18	<b>R363818</b>	363818	Spring - Fits Sprial Brush	1	
19	<b>R415521</b>	415521, 415522	Screw - Set - 5/16-18 x 3/8	6	
20	<b>R302-5</b>	302-5, 471214, 471223, 471226	Fitting - Grease	2	
21	<b>R400258</b>	400258	Bolt - Hex HD 3/8-16 x 3/4	2	

All original equipment manufacturers names and part numbers are used for identification purposes only, and we are in no way implying that our products are original equipment parts. Prices subject to change without notice.



# Replaces Jacobsen GP400 Parts

Cutting Unit  
Rear Brush



Item No	R&R Part No.	OEM Part No.	Description	Qty Req	Order Quantity
22	<b>R3254-6</b>	3254-6, 446140, 446142	Washer - Lock 3/8	3	
23	<b>R453011</b>	453011	Washer - Flat 3/8 SAE Y/Zinc	2	
24	<b>R101344</b>	101344, 400194	Bolt - Hex HD 5/16-18 x 1-3/4	2	
25	<b>R453009</b>	3256-23, 452004, 452006, 452008, 453009	Washer - Flat 5/16 SAE	4	
26	<b>R453023</b>	453023	Washer - Flat 1/4	2	
27	<b>R446136</b>	446134, 446136	Washer - Lock 5/16 Zinc	2	
28	<b>R443106</b>	443106	Nut - 5/16-18 Y/Zinc Plated	2	
29	<b>R443102</b>	443102	Nut - 1/4-20 Yellow Zinc	1	
30	<b>R3004410</b>	3004410	Spacer - Medium	1	
31	<b>R3253-3</b>	3253-3, 446128, 446130	Washer - Lock 1/4	2	
33	<b>R321-4</b>	321-4, 400108	Bolt - Hex HD 1/4-20 x 3/4	3	
34	<b>R453013</b>	452008, 453013	Washer - Flat 7/16	1	
35	<b>R400298</b>	400298	Bolt - Hex HD 3/8-24 x 1	1	
36	<b>R364124</b>	364124	Bracket - Mounting Sprial Br	1	
37	<b>R365302</b>	365302	Spacer - Sprial Brush Pulley	1	
38	<b>R1002767</b>	1002767	Bracket - Spiral Brush Shield	1	

All original equipment manufacturers names and part numbers are used for identification purposes only, and we are in no way implying that our products are original equipment parts. Prices subject to change without notice.