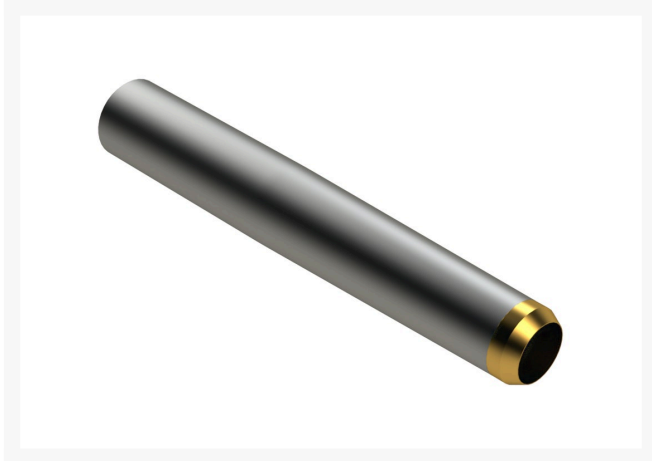




Alloy Hollow Tine with Carbide Tip - .750MT x 4.750L x .630OD R201512



Details

Carbide-Tipped Alloy Hollow Tine construction uses the same special high carbon alloy steel tubing and hardened to RC45-48 as the alloy hollow tines, with the addition of a carbide tip for even longer life. The advantage of using carbide-tipped tines is the ability to maintain your maximum aerating depth consistently over the life of the tines. You can expect these tines to last 6-8 times longer than the R&R Standard Hollow Tines. Carbide-tipped tines are not recommended in rocky soil conditions, as carbide, which is extremely wear resistant, can break when encountering hard impacts in rocks.

Replaces

R&R Products	R108-9143
Toro	108-9143

Specifications

Manufacturer	R&R Products
A - Tine Type	Alloy Hollow with Carbide Tip
B - Tine Mounting Dia.	.750 in (19mm)
C - Tine Length	4.75 in (121mm)
Carbide Tip	Carbide Tip
D - Tine Tip Outside (Hole) Dia.	.630 in (16mm)
E - Tine Tip Inside (Core) Dia.	.480 in (1.22mm)
F - Tine Wall Thickness	.072 in (1.8mm)

Fits Models

Jacobsen GA-24

Pekerti Jaya Sdn. Bad

45 Jalan Industri USJ 1/5, Taman Perindustrian USJ 1 Subang Jay, 47600
603-80216684

<https://pekertijaya.rrproducts.com/>



**Alloy Hollow Tine with Carbide Tip -
.750MT x 4.750L x .630OD
R201512**



Ryan Greensaire II
Toro Greens Aerator
Toro ProCore 1298
Toro ProCore 440
Toro ProCore 648
Toro ProCore 660
Toro ProCore 864
Toro ProCore 880
Toro ProCore 648s

Pekerti Jaya Sdn. Bad

45 Jalan Industri USJ 1/5, Taman Perindustrian USJ 1 Subang Jay, 47600
603-80216684

<https://pekertijaya.rrproducts.com/>