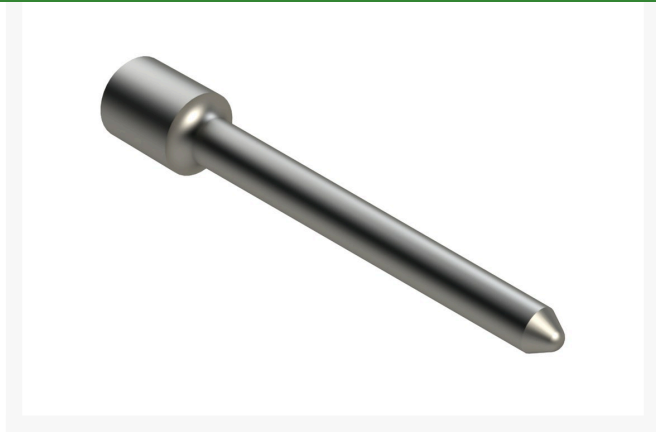




Alloy Solid Tine - .875MT x 5.500L x .4375OD R201409



Details

Alloy Solid Tines aerate without the work of cleaning up the mess of cores and debris left behind with conventional core aerating. R&R Solid Tines are manufactured from a special high-carbon steel bar and heat treated to RC45-48 in our own heat treatment facility. They are available in all standard sizes but are especially popular in the smaller diameters for aerating in the summer months to relieve the stress on greens by allowing water, air and nutrients to easily flow into the root zone. With the combination of small holes and no cores, play can be resumed immediately.

Replaces

Cushman 201409

Specifications

Manufacturer	R&R Products
A - Tine Type	Alloy Solid
B - Tine Mounting Dia.	.875 in (22mm)
C - Tine Length	5.500 in (140mm)
D - Tine Tip Outside (Hole) Dia.	.4375 in (11.1mm)

Fits Models

Cushman GA60
John Deere Aercore 1000
John Deere Aercore 1500
John Deere Aercore 2000
John Deere Aercore 800
Ryan GA30
Ryan GA60

Pekerti Jaya Sdn. Bad

45 Jalan Industri USJ 1/5, Taman Perindustrian USJ 1 Subang Jay, 47600
603-80216684

<https://pekertijaya.rrproducts.com/>