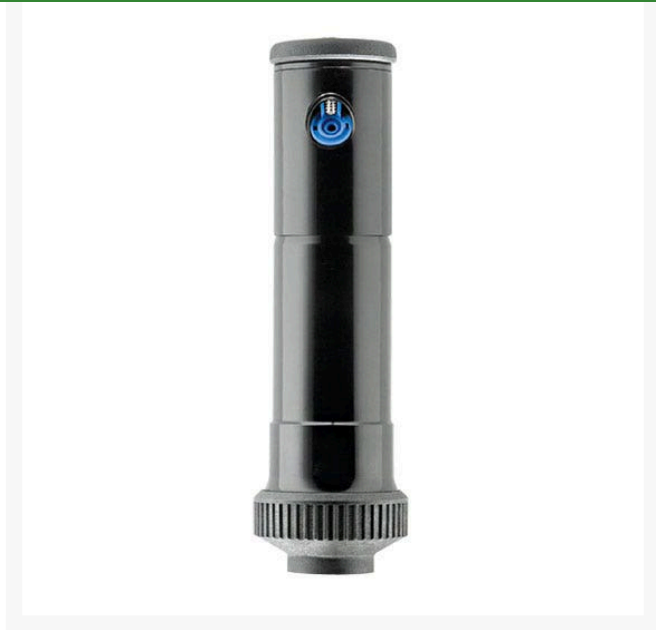




6000-PRO Shrub Head

RGW6001



Details

-The 6000 Pro series rotors are constructed of high impact plastic and all internal metal parts are made of stainless steel. -3/4" (2 cm) inlet -No tools are required to adjust the arc from 40 - 360 degrees by using the easy to use Click-Set disc. -This series comes with 8 interchangeable nozzles with a discharge range between 1.0 - 9.5 gpm (0.23 - 2.16 m³/hr). There is also a low angle nozzle tree available. -All models come with a rubber protective cap and an optional vandal resistant retaining screw. -The built in slip clutch protects the gears and motor from damage when adjusting for a part circle. If the rotor is manually moved out of position it will automatically reset to the defined pattern. -NIR2 (Nozzle Insertion / Radius Reduction) eliminates the need to remove the cap while fine tuning the radius and inserting the nozzle. -6000 comes in many various styles: shrub head version, heavy duty stainless version, 12" (30,5 cm) high pop version, anti-drain valve (ADV) version and the standard version.

Specifications

Manufacturer	Weathermatic
Body Height	7.5 in
Cap Diameter	2.875 in
Exposed Cap Diameter	1.875 in
Inlet Size	3/4 in
Maximum Pressure	75 psi
Pop-up Height	4 in
Quick Coupling Valve	Yellow locking cover
Cap Type	
Screen Mesh	.045 sq in
Spinkler Flow	1.0 - 9.5 gpm
Spray Trajectory	25 degrees
Sprinkler Operating Range	20 - 65 psi

Pekerti Jaya Sdn. Bad

45 Jalan Industri USJ 1/5, Taman Perindustrian USJ 1 Subang Jay, 47600
603-80216684

<https://pekertijaya.rrproducts.com/>



6000-PRO Shrub Head

RGW6001



Replacement Parts

RGW6095	6090 Low Angle 13 Degree Trajectory Nozzle For 6000 Series Only
RGW77576	6000 Pro Series 25 Degree Trajectory Nozzle Bag of 10

Pekerti Jaya Sdn. Bad

45 Jalan Industri USJ 1/5, Taman Perindustrian USJ 1 Subang Jay, 47600
603-80216684

<https://pekertijaya.rrproducts.com/>