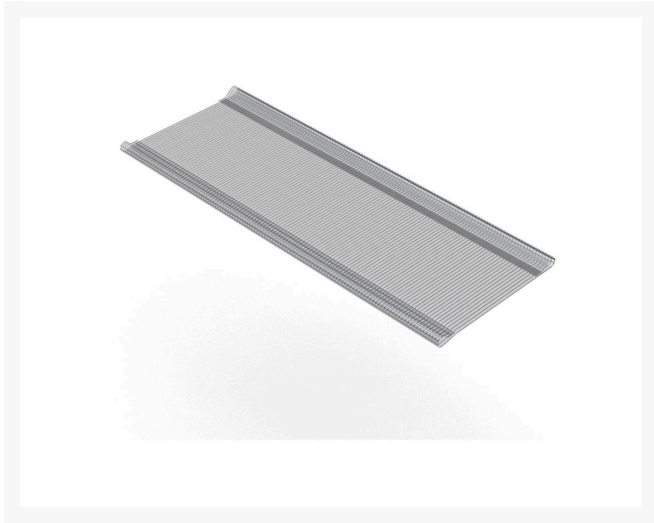




Keystone Steel Drag Mat - 6' x 3' to Fit Drag Frame

R08757



Details

Perfectly level and smooth the surface on dirt, gravel, clay or sand. Ideal for top dressing and breaking up aerification plugs on golf course greens and fairways, dragging baseball fields and track surfaces, sand trap raking, and debris removal before laying sod or grass seed. Rust resistant. Reversible. Rolls up like carpet for easy cleaning. Mesh size 1" x 1", Crimp 3/8" deep x .046" thick, 13 gauge (.0915") galvanized steel rods. Wt. 1.6 lbs/sq ft.

- Levels dirt, gravel, clay or sand
- Ideal for to dressing
- Breaks up aerification plugs
- Rakes sand traps
- Removes debris
- Rust resistant
- Reversible
- 1" x 1" mesh
- 13 gauge galvanized steel rods
- Frame not included

Replaces

Toro	08757
------	-------

Specifications

Manufacturer	Keystone
Dimensions	6 x 3 ft
Weight (lbs)	69 lb

Fits Models

Pekerti Jaya Sdn. Bad

45 Jalan Industri USJ 1/5, Taman Perindustrian USJ 1 Subang Jay, 47600
603-80216684

<https://pekertijaya.rrproducts.com/>



Keystone Steel Drag Mat - 6' x 3' to Fit Drag Frame

R08757



R&R Products Sand Max 516
R&R Products Sand Max 518
R&R Products Sand Max 521LP
Toro Groundsmaster 7200
Toro Groundsmaster 7210
Toro Sand Pro 3040
Toro Sand Pro 5040

Pekerti Jaya Sdn. Bad

45 Jalan Industri USJ 1/5, Taman Perindustrian USJ 1 Subang Jay, 47600
603-80216684

<https://pekertijaya.rrproducts.com/>