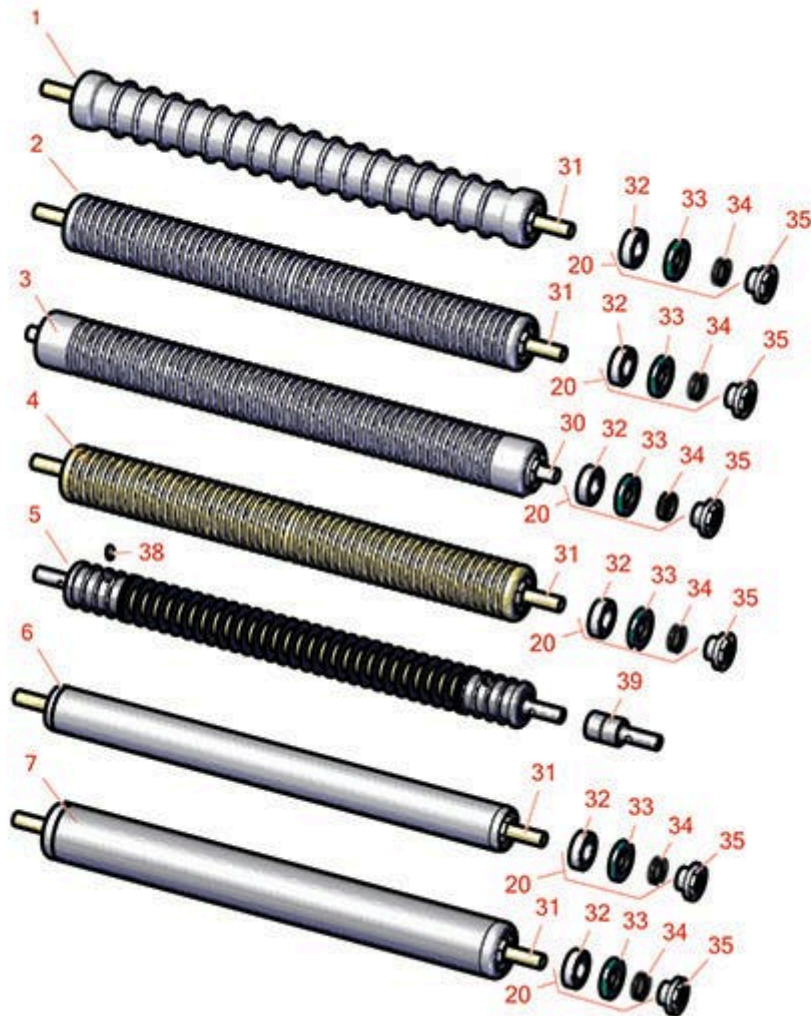




# Replaces Toro Greensmaster 3150-Q

## Parts

DPA Cutting Unit - Models 04618, 04619 & 04624  
Rollers



All original equipment manufacturers names and part numbers are used for identification purposes only, and we are in no way implying that our products are original equipment parts. Prices subject to change without notice.



# Replaces Toro Greensmaster 3150-Q Parts

DPA Cutting Unit - Models 04618, 04619 & 04624  
Rollers



Item No	R&R Part No.	OEM Part No.	Description	Qty Req	Order Quantity
---------	--------------	--------------	-------------	---------	----------------

## R&R Rollers

1	<b>R115-7386</b>	115-7386	Roller - Wide Grooved Machined Aluminum - 2-1/2 Dia	1	
---	------------------	----------	-----------------------------------------------------	---	--

*Detail Description: Constructed with a through shaft, this aluminum roller is machined with 1-1/8" wide grooves for the least amount of ground contact and uses ball bearings.:*

2	<b>R115-7360</b>	115-7360	Roller - Narrow Grooved Machined Aluminum - 2 1/2	1	
---	------------------	----------	---------------------------------------------------	---	--

*Detail Description: Constructed with a through shaft, this aluminum roller is machined with narrow grooves and uses ball bearings.:*

3	<b>R121-4675</b>	121-4675	Roller - Extended Machined Grooved	1	
---	------------------	----------	------------------------------------	---	--

4	<b>R107-3510</b>	107-3510	Grooved Steel Roller	1	
---	------------------	----------	----------------------	---	--

5	<b>R21-6540</b>	21-6540	Roller - Grooved Repairable Steel	1	
---	-----------------	---------	-----------------------------------	---	--

*Detail Description: Constructed with greasable "water-pump" style bearings, this roller can be repaired by unscrewing the ends and replacing the series of washers and spacers.:*

6	<b>R140-5560</b>	105-5776, 106-6945, 107-3509, 119-4093, 120-9595, 140-5560	Roller - Smooth 2 in Steel Rear	1	
---	------------------	---------------------------------------------------------------------------	---------------------------------	---	--

7	<b>R115-7388</b>	115-7388, 140-5681	Roller - Smooth Tubular Steel 2-1/2 in Dia	1	
---	------------------	-----------------------	--------------------------------------------	---	--

*Detail Description: Constructed with a through shaft, this steel roller uses a through shaft and ball bearings.:*

## Overhaul Kits

20	<b>R107-1594</b>	107-1594	Overhaul Kit - Roller	1	
----	------------------	----------	-----------------------	---	--

*Detail Description: Includes 2 ea.: R106-6941 Seals, R106-6942 V-Rings & R251-347 Bearings:*

## Other Parts Available

All original equipment manufacturers names and part numbers are used for identification purposes only, and we are in no way implying that our products are original equipment parts. Prices subject to change without notice.



# Replaces Toro Greensmaster 3150-Q Parts

*DPA Cutting Unit - Models 04618, 04619 & 04624  
Rollers*



Item No	R&R Part No.	OEM Part No.	Description	Qty Req	Order Quantity
30	<b>R120-5404</b>	120-5404	Shaft- Roller	1	
31	<b>R119-4090</b>	119-4090	Shaft - Roller - Hardened	1	
32	<b>R251-347</b>	251-347, 72-5690	Bearing - Ball	2	
33	<b>R106-6941</b>	106-6941	Seal - Double Lip	2	
34	<b>R106-6942</b>	106-6942	V-Ring - Roller	2	
35	<b>R114-3745</b>	106-6939, 108-3151, 114-3745, 114-5411	Locknut - Bearing - Stainless	2	
38	<b>R302-5</b>	21-6010, 302-11, 302-37, 302-47, 302-5, 302-57, 302-58, 302-6, 31-0300, 32-9660, 60-0800, 62-3880, 92-4181	Fitting - Grease	2	
39	<b>R52-3180</b>	21-6410, 52-3180	Bearing - Front Roller	2	

All original equipment manufacturers names and part numbers are used for identification purposes only, and we are in no way implying that our products are original equipment parts. Prices subject to change without notice.