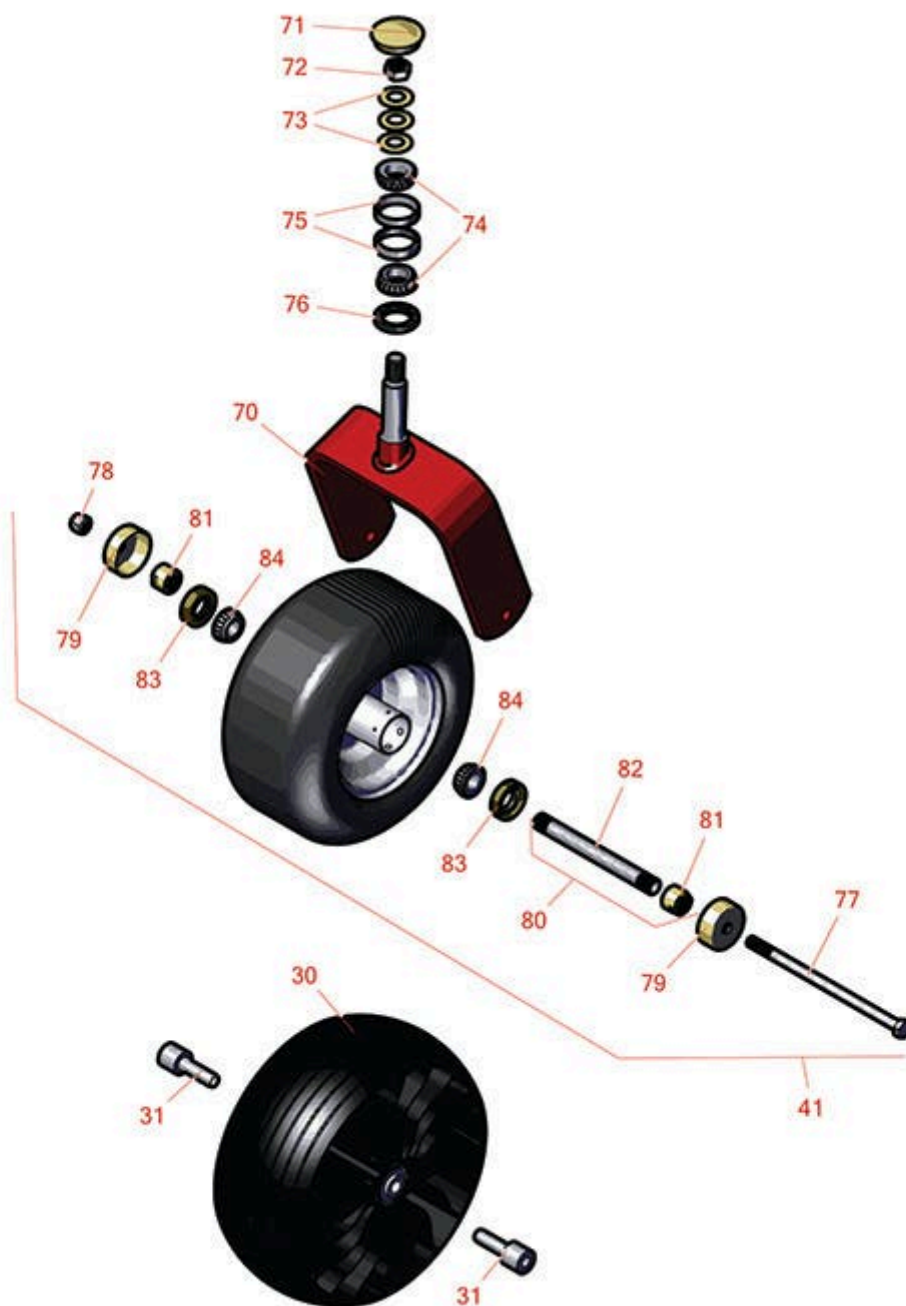




Replaces Toro Z Master Professional 7000 Parts

Zero Turn Mower with 72in Deck - Model 74274
Caster Wheel



All original equipment manufacturers names and part numbers are used for identification purposes only, and we are in no way implying that our products are original equipment parts. Prices subject to change without notice.



Replaces Toro Z Master Professional 7000 Parts

Zero Turn Mower with 72in Deck - Model 74274
Caster Wheel



Item No	R&R Part No.	OEM Part No.	Description	Qty Req	Order Quantity
---------	--------------	--------------	-------------	---------	----------------

Tires & Wheels

0	TIRES		Click Here to View Complete Tire Selection	0	
41	R109-9127	109-9124, 109-9125, 109-9127	Tire & Wheel - 13x6.50-6 Flat Free	2	
41	R127-9526	127-9526	Tire & Wheel - 13x6.50-6	2	

Optional Michelin Tweel Tires

30	RTMT73818	109-9127, 126-7592, 126-7753, 127-9526, 127-9528, 127-9540, 139-3604, 140-4896	Michelin X Tweel Turf Caster Grooved - 13x6.5N6 (5/8in Mount) 290 lb Max Load	2	
----	-----------	---	---	---	--

Detail Description: Michelin X Tweel Turf casters replace the existing front casters on zero turn radius mowers, and completely eliminate the risk of flat tires. They have a consistent hub height which helps ensure the mower deck produces an even cut, while the poly-resin spokes help dampen the ride for enhanced operator comfort, even when navigating over curbs and other bumps. They are designed to provide a long wear life.:

30	RTMT41011	109-9127, 126-7592, 126-7753, 127-9526, 127-9528, 127-9540, 139-3604, 139-3639, 140-4896	Michelin X Tweel Turf Caster Smooth - 13x6.5N6 (5/8in Mount) 290 lb Max Load	2	
----	-----------	--	--	---	--

Detail Description: Michelin X Tweel Turf casters replace the existing front casters on zero turn radius mowers, and completely eliminate the risk of flat tires. They have a consistent hub height which helps ensure the mower deck produces an even cut, while the poly-resin spokes help dampen the ride for enhanced operator comfort, even when navigating over curbs and other bumps. They are designed to provide a long wear life.:

31	RTMT40653		Michelin Spacer - 1/2in ID x 1in OD	4	
----	-----------	--	-------------------------------------	---	--

All original equipment manufacturers names and part numbers are used for identification purposes only, and we are in no way implying that our products are original equipment parts. Prices subject to change without notice.



Replaces Toro Z Master Professional 7000 Parts

Zero Turn Mower with 72in Deck - Model 74274
Caster Wheel



Item No	R&R Part No.	OEM Part No.	Description	Qty Req	Order Quantity
---------	--------------	--------------	-------------	---------	----------------

Other Parts Available

70	R116-8888	103-1474-01, 116-6707-01, 116-8888	Fork - Caster 7.875 in Inside	2	
71	R103-4882	103-4882	Grease Cap - Castor	2	
72	R3296-51	3296-51, 3296-81	Nut - Nylon Lock 3/4-10 Gr 8	2	
73	R1-633508	1-633508	Washer - Spring Disc	6	
74	R254-94	1-543509, 254-94, 32-8090, 32-8240, 32-9640, 40440, 62-3330	Tapered Bearing Cone	4	
75	R254-72	01-103-0050, 01-103-0120, 01-103-0140, 1-543508, 254-71, 254-72, 40439, 62-3340, 99-4511	Cup - Bearing	4	
76	R116-5647	116-5647	Seal - Grease	2	
77	R325-39	325-39	Bolt - Hx HD 1/2-13 x 9 1/2	2	
78	RF5003	32127-29, 32131-5, 32132-5, 3296-23	Locknut - ESNA 1/2-13	2	
79	R103-2768	103-2768	Guard - Seal	4	
80	R126-5361	126-5361	Axle Assy - with Bushing - Caster	2	
81	R103-3051	103-3051	Spacer - Nut - Hardened	4	

All original equipment manufacturers names and part numbers are used for identification purposes only, and we are in no way implying that our products are original equipment parts. Prices subject to change without notice.



Replaces Toro Z Master Professional 7000 Parts

*Zero Turn Mower with 72in Deck - Model 74274
Caster Wheel*



Item No	R&R Part No.	OEM Part No.	Description	Qty Req	Order Quantity
82	R103-5156	103-5156	Axle- Caster	2	
83	R103-0063	103-0063	Seal - Grease	4	
84	R254-78	01-102-0060, 01-102-0130, 1-633585, 254-78, 32-7790, 32-9580, 93-4813	Tapered Bearing Cone	4	

All original equipment manufacturers names and part numbers are used for identification purposes only, and we are in no way implying that our products are original equipment parts. Prices subject to change without notice.