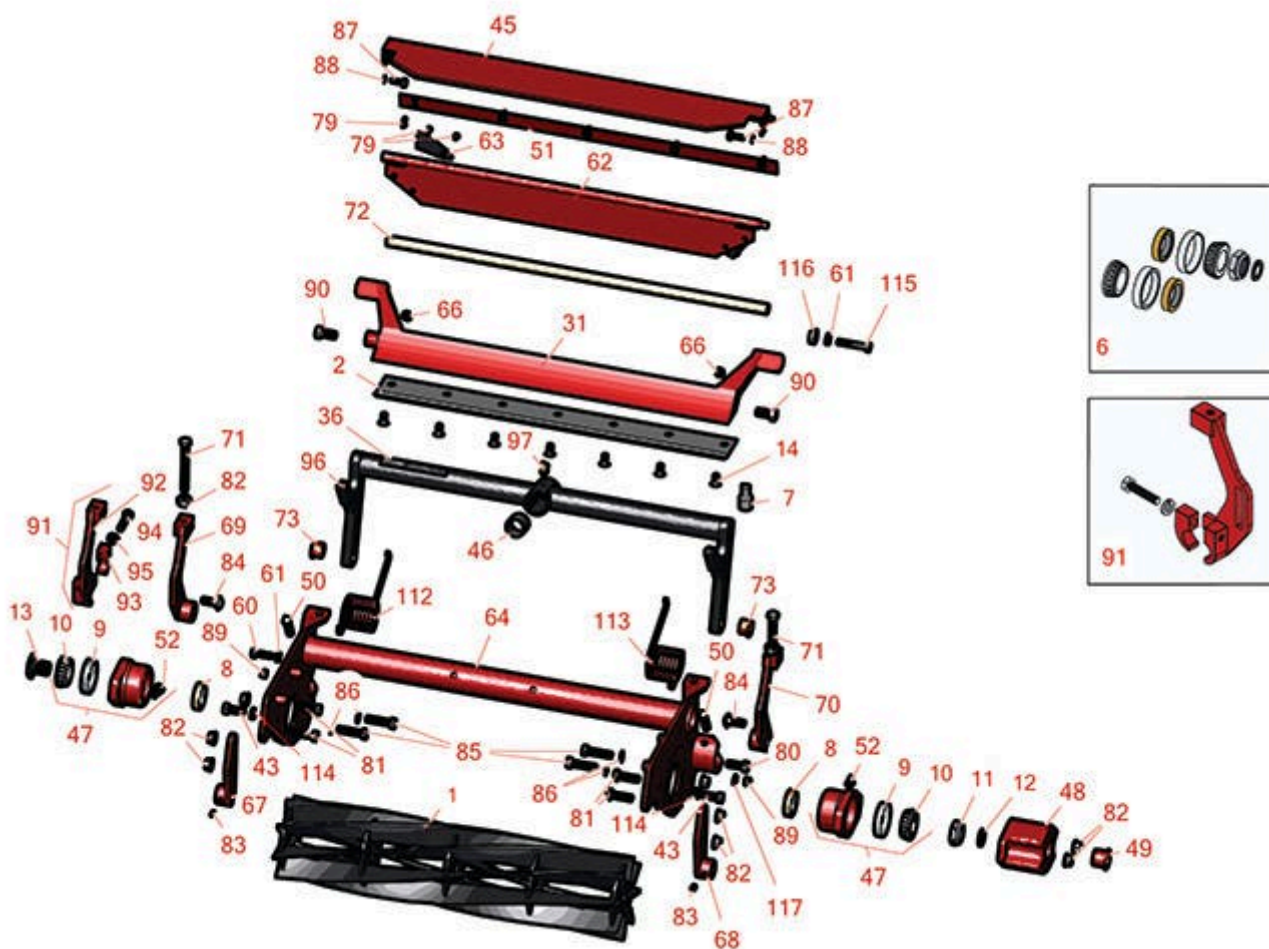




# Replaces Toro Reelmaster 5100-D Parts

Cutting Unit - Model 03505 & 03508

Reel & Bedknife



All original equipment manufacturers names and part numbers are used for identification purposes only, and we are in no way implying that our products are original equipment parts. Prices subject to change without notice.



# Replaces Toro Reelmaster 5100-D Parts

Cutting Unit - Model 03505 & 03508  
Reel & Bedknife



Item No	R&R Part No.	OEM Part No.	Description	Qty Req	Order Quantity
---------	--------------	--------------	-------------	---------	----------------

## R&R Reels, Lifetime Guaranteed

1	<b>R14-0659</b>	14-0659, 57-5300	Reel - 5 Blade Heavy Duty	1	
---	-----------------	---------------------	---------------------------	---	--

*Detail Description: R&R Reel blades are expertly crafted from premium high carbon-boron alloy steel, heat-treated to perfectly complement both R&R and OEM bedknives. Each reel undergoes precision cylindrical grinding on bearing surfaces, followed by relief grinding for optimal performance. Advanced computer balancing ensures extended reel and bearing life. Backed by our lifetime guarantee against defects in materials and craftsmanship under normal use, R&R Reels deliver unmatched durability and cutting precision you can trust.:*

1	<b>R14-0649</b>	14-0649	Reel - 8 Blade Heavy Duty	1	
---	-----------------	---------	---------------------------	---	--

*Detail Description: R&R Reel blades are expertly crafted from premium high carbon-boron alloy steel, heat-treated to perfectly complement both R&R and OEM bedknives. Each reel undergoes precision cylindrical grinding on bearing surfaces, followed by relief grinding for optimal performance. Advanced computer balancing ensures extended reel and bearing life. Backed by our lifetime guarantee against defects in materials and craftsmanship under normal use, R&R Reels deliver unmatched durability and cutting precision you can trust.:*

2	<b>R63-8610</b>	63-8610	Bedknife - Fairway Cut .375 - 1.00 HOC	1	
---	-----------------	---------	---	---	--

*Detail Description: R&R Bedknives are manufactured from high carbon-boron alloy steel and then hardened to RC46-49 to match the temper of our reel blades and original equipment reels. Bedknives are surface ground on the top and front edge and straightened three times before being packaged with oil for rust prevention. All R&R Bedknives now have an increased front edge grind for added life. All R&R Bedknives are guaranteed against defects in material and workmanship under normal use for the life of the part.:*

2	<b>R150462</b>	63-8610, 94-6396	Bedknife - 7 Hole Thick 5/16	1	
---	----------------	---------------------	------------------------------	---	--

*Detail Description: R&R Bedknives are manufactured from high carbon-boron alloy steel and then hardened to RC46-49 to match the temper of our reel blades and original equipment reels. Bedknives are surface ground on the top and front edge and straightened three times before being packaged with oil for rust prevention. All R&R Bedknives now have an increased front edge grind for added life. All R&R Bedknives are guaranteed against defects in material and workmanship under normal use for the life of the part.:*

2	<b>R150464</b>		Bedknife - Super Thick 7/16	1	
---	----------------	--	-----------------------------	---	--

All original equipment manufacturers names and part numbers are used for identification purposes only, and we are in no way implying that our products are original equipment parts. Prices subject to change without notice.



# Replaces Toro Reelmaster 5100-D Parts

Cutting Unit - Model 03505 & 03508

Reel & Bedknife



Item No	R&R Part No.	OEM Part No.	Description	Qty Req	Order Quantity
---------	--------------	--------------	-------------	---------	----------------

*Detail Description: R&R Bedknives are manufactured from high carbon-boron alloy steel and then hardened to RC46-49 to match the temper of our reel blades and original equipment reels. Bedknives are surface ground on the top and front edge and straightened three times before being packaged with oil for rust prevention. All R&R Bedknives now have an increased front edge grind for added life. All R&R Bedknives are guaranteed against defects in material and workmanship under normal use for the life of the part.:*

## Overhaul Kits & Service Tools

6	<b>R255-300</b>	107-1590	Overhaul Kit - Cutting Unit	0
---	-----------------	----------	-----------------------------	---

*Detail Description: Includes 2 ea: R253-96 Seals, R254-72 Cups, R254-94 Bearings; 1 ea: R253-61 Seal, R32127-46 Locknut:*

7	<b>R51-0880</b>	51-0880	Bedknife Screw Driver Tool	0
---	-----------------	---------	----------------------------	---

*Detail Description: Easily install and remove bed knife screws with the help of a ratchet with 3/8" drive. Tool manufactured with hardened alloy steel.:*

## Other Parts Available

8	<b>R253-96</b>	253-96	Seal - Oil Single Lip Reel	2
---	----------------	--------	----------------------------	---

9	<b>R254-72</b>	01-103-0050, 01-103-0120, 01-103-0140, 1-543508, 254-71, 254-72, 40439, 62-3340, 99-4511	Cup - Bearing	2
---	----------------	--	---------------	---

10	<b>R254-94</b>	1-543509, 254-94, 32-8090, 32-8240, 32-9640, 40440, 62-3330	Tapered Bearing Cone	2
----	----------------	---	----------------------	---

11	<b>R32127-46</b>	32127-46, 3296-60	Locknut	1
----	------------------	----------------------	---------	---

12	<b>R253-61</b>	253-61	Seal - Oil Reel	1
----	----------------	--------	-----------------	---

All original equipment manufacturers names and part numbers are used for identification purposes only, and we are in no way implying that our products are original equipment parts. Prices subject to change without notice.



## Replaces Toro Reelmaster 5100-D Parts

Cutting Unit - Model 03505 & 03508

Reel & Bedknife



Item No	R&R Part No.	OEM Part No.	Description	Qty Req	Order Quantity
13	<b>R93-1394</b>	93-1394	Nut - Splined RH Thrd .812 Long	1	
13	<b>R77-0340</b>	77-0340	Nut - Splined Reel	1	
14	<b>R150476</b>	3-3816, 3-6462, 57-4910	Screw - Bedknife 5/16-18 x 5/8	7	
31	<b>R10-4930</b>	10-4930, 10-4930-01	Bed Bar	1	
36	<b>R67-7960</b>	27-2890, 62-5070, 67-7960	Decal - Warning	1	
43	<b>R323-6</b>	01-150-0010, 01-178-0608, 20-47-AD, 20-47-AGD, 3224-2, 323-6, 49-3510, 908034P, 908332	Bolt - Hex HD 3/8-16 x 1 GR5 YZ	2	
45	<b>R75-1840</b>	75-1840	Shield - Grass	1	
46	<b>R67-1750</b>	67-1750	Bushing - 1 Long	2	
47	<b>R10-5120</b>	10-5120	Housing - Bearing Reel	2	
<i>Detail Description: Includes R253-96 &amp; R254-72:</i>					
48	<b>R10-5080</b>	10-5080, 10-5080-01	End - Cap Reel Brg Housing	1	
48	<b>R92-4080</b>	92-4080, 93-8732	Roller End - Cap Reel Bearing Housing	1	
<i>Detail Description: Includes sensor hole:</i>					
49	<b>R12-0460</b>	12-0460	Caplug - End Cap	1	
50	<b>R3243-13</b>	3243-13	Screw - Bed Bar Adjusting	4	

All original equipment manufacturers names and part numbers are used for identification purposes only, and we are in no way implying that our products are original equipment parts. Prices subject to change without notice.



## Replaces Toro Reelmaster 5100-D Parts

Cutting Unit - Model 03505 & 03508

Reel & Bedknife



Item No	R&R Part No.	OEM Part No.	Description	Qty Req	Order Quantity
51	<b>R36-7260</b>	36-7260	Bar - Cut Off Grass Shield	1	
52	<b>R302-60</b>	302-60	Zerk - Grease 90 Deg.	2	
52	<b>R700414</b>	302-11, 302-19, 302-4, 32-8170	Zerk - Grease 1/4-28 45 Deg	2	
60	<b>R322-5</b>	01-178-0508, 20-26-AD, 20-26-AGD, 30-9000, 322-5, 513341, 519755, 908019P, N/A	Bolt - Hex HD 5/16-18 x 1	1	
61	<b>R3253-4</b>	01-166-0110, 01-166-0510, 23-10-GD, 24-7170, 30-8520, 3253-4, 48-9350, 48-9360, 48-9570, 68-9420, 99-7577	Washer - Lock 5/16 Zinc	1	
62	<b>R75-1560</b>	75-1560	Deflector - Rear	1	
63	<b>R75-1720</b>	75-1720	Flap - Rubber Rear Deflector	2	
64	<b>R75-6660</b>	75-6660	Frame	1	
66	<b>R3256-49</b>	3256-49	Washer - Flat 3/16x9/16x18GA	14	
67	<b>R75-1960</b>	75-1960	Bracket - RH Front Roller	1	
68	<b>R75-1980</b>	75-1980	Bracket - LH Front Roller	1	
69	<b>R75-1610</b>	75-1610	Bracket - Rear HOC RH	1	

All original equipment manufacturers names and part numbers are used for identification purposes only, and we are in no way implying that our products are original equipment parts. Prices subject to change without notice.



## Replaces Toro Reelmaster 5100-D Parts

Cutting Unit - Model 03505 & 03508

Reel & Bedknife



Item No	R&R Part No.	OEM Part No.	Description	Qty Req	Order Quantity
70	<b>R75-1620</b>	75-1620	Bracket - Rear HOC LH	1	
71	<b>R323-49</b>	323-49	Bolt - HOC 3/8-16 x 3 1/2	2	
72	<b>R75-1710</b>	75-1710	Rod - Support Cutting Unit	1	
73	<b>R3-1506</b>	256-287, 3-1506, 75-2160, Apr-50	Bushing - Bronze	2	
79	<b>R32144-73</b>	104-2065, 32144-73	Screw - Machine Hex Washer Head	5	
80	<b>R323-2</b>	01-178-0604, 323-2	Bolt - Hex HD 3/8-16 x 1	1	
81	<b>R400264</b>	01-150-0180, 01-178-0610, 20-48-AD, 20-48-AGD, 32-9160, 3224-3, 323-29, 323-7, 400264, 908035P	Bolt - Hex HD 3/8-16 x 1-1/4	4	
82	<b>R3296-39</b>	32127-25, 32128-36, 3290-357, 3296-17, 3296-22, 3296-39, 915663P, 99-7443	Locknut - 3/8-16 Nylon	4	

All original equipment manufacturers names and part numbers are used for identification purposes only, and we are in no way implying that our products are original equipment parts. Prices subject to change without notice.



## Replaces Toro Reelmaster 5100-D Parts

Cutting Unit - Model 03505 & 03508

Reel & Bedknife



Item No	R&R Part No.	OEM Part No.	Description	Qty Req	Order Quantity
82	R321397	01-158-0480, 01-189-0616, 22-13-AJF, 22-13-AJFD, 32127-19, 32127-32, 32146-2, 32146-3, 32152-7, 32153-2, 32153-8, 3296-11, Aug-80	Nut - 3/8-16 ESNA	4	
83	R3242-2	3242-2	Screw - 5/16-18 x 1/2 Sq HD Set	4	
84	R3231-2	01-157-0170, 01-173-0608, 3231-2, 3231-22, 3231-28, 900063P	Bolt - Carriage 3/8-16 x 1	2	
85	R323-53	323-53, 57-3210	Bolt - Hex HD 3/8-16 x 1-3/4	2	
86	R3255-9	3255-9	Washer - Lock 3/8 Ext. Star	6	
87	R321-4	01-150-1030, 01-178-0406, 20-3-AGD, 321-4, 3222-1	Bolt - Hex HD 1/4-20 x 3/4	2	
88	R3253-3	01-166-0070, 01-166-0410, 23-9-GD, 24-7150, 3253-3, 3256-1, 352-167	Washer - Lock 1/4	2	

All original equipment manufacturers names and part numbers are used for identification purposes only, and we are in no way implying that our products are original equipment parts. Prices subject to change without notice.



## Replaces Toro Reelmaster 5100-D Parts

Cutting Unit - Model 03505 & 03508

Reel & Bedknife



Item No	R&R Part No.	OEM Part No.	Description	Qty Req	Order Quantity
88	R3256-22	24-9-BD, 3-1032, 3256-1, 3256-22, 93-0954, 93-0989	Washer - Flat 1/4 Yellow	2	
88	R453023	3256-1, 3256-22, 3256-72, 33094-00	Washer - Flat 1/4	2	
89	R301504	2296-42, 301504, 32127-24, 32128-33, 32146-17, 3296-16, 3296-42, 3296-42 , 915661P	Locknut - ESNA 1/4-20	2	
90	R315298	217-74, 31-1070	Bolt - Bed Bar	2	
91	R150430		Bracket - Assy Quick Release	1	
<i>Detail Description: Exclusively from R&amp;R! This R&amp;R bracket allows quick removal and replacement of rear rollers without removing brackets from the frame and having to reset the height of cut! Replace only L.H. bracket to use the system.:</i>					
92	R150431		Bracket - Only Quick Release	1	
93	R150432		Clamp - Quick Release Bkt	1	
94	R322-7	01-150-0750, 01-150-0760, 01-178-0512, 20-28-AD, 20-28-AGD, 322-7, 3223-4	Bolt - Hex HD 5/16-18 x 1-1/2	1	
95	R446136		Washer - Lock 5/16 Zinc	1	

All original equipment manufacturers names and part numbers are used for identification purposes only, and we are in no way implying that our products are original equipment parts. Prices subject to change without notice.





## Replaces Toro Reelmaster 5100-D Parts

Cutting Unit - Model 03505 & 03508

Reel & Bedknife



Item No	R&R Part No.	OEM Part No.	Description	Qty Req	Order Quantity
96	<b>R75-1600</b>	75-1600	Frame - Carrier Cutting Unit	1	
112	<b>R83-4720-01</b>	83-4720-01	Torsion Spring - RH	1	
113	<b>R83-4730-01</b>	83-4730-01	Torsion Spring - LH	1	
114	<b>R3253-21</b>	215-51, 30-8470, 3253-21, Jul-12	Washer - Lock 3/8	2	
115	<b>R19H3130</b>	322-9, 3223-5	Bolt - Hex HD 5/16-18 x 1-3/4	2	
116	<b>R251-259</b>	251-259, 251-307	Bearing - Ball	2	
117	<b>R3256-78</b>	3256-78	Washer - Flat	2	
118	<b>R353-585</b>	353-585, 353-587, 354-34, 72-4380, 75-1210, 75-1270, 92-8863, 92-8864	Seal - High Pressure - Reel Motor	1	

All original equipment manufacturers names and part numbers are used for identification purposes only, and we are in no way implying that our products are original equipment parts. Prices subject to change without notice.