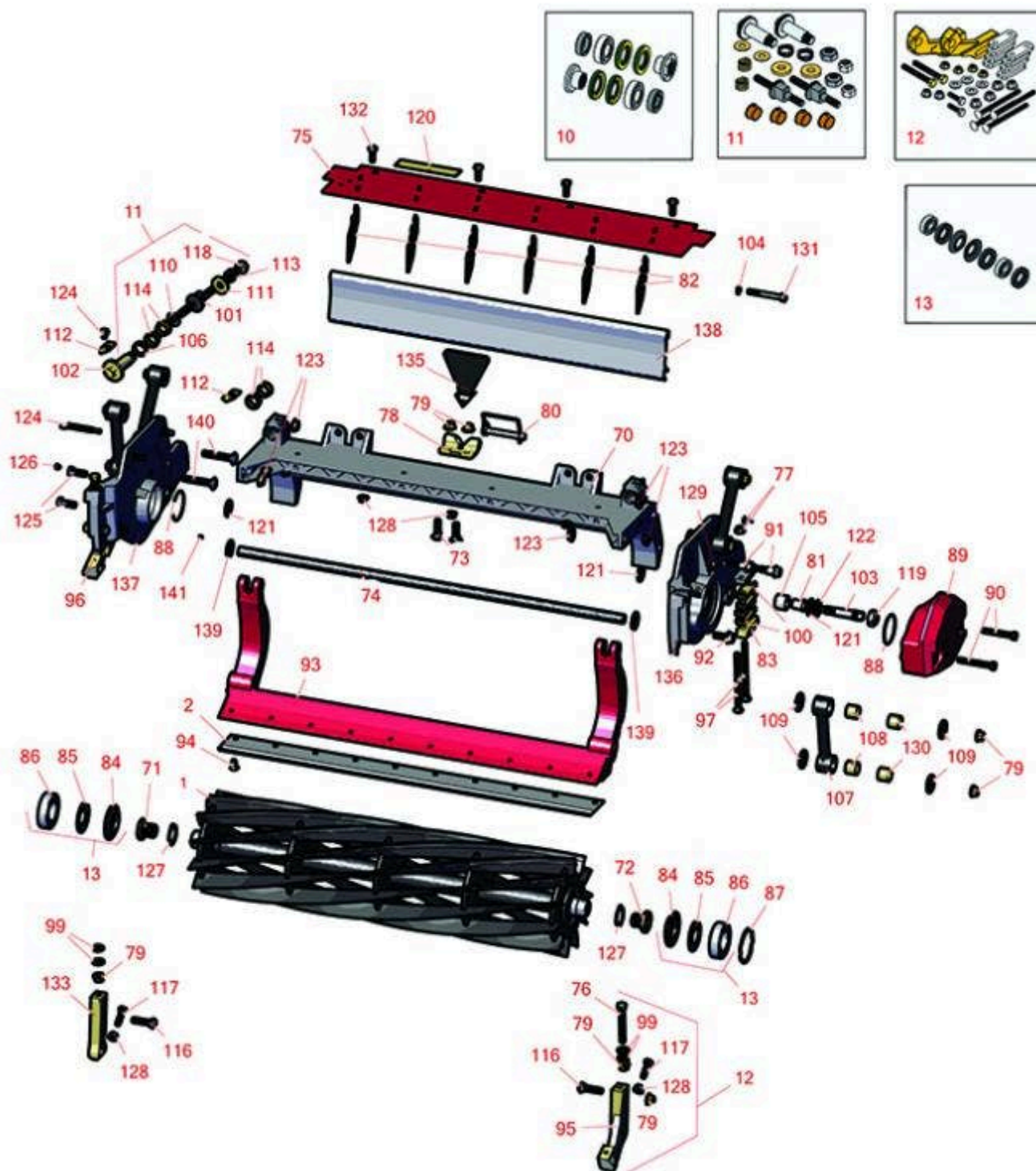




## Replaces Toro Reelmaster 3105-D Parts

27in DPA Cutting Unit - Models 03188, 03189 & 03190  
Reel & Bedknife



All original equipment manufacturers names and part numbers are used for identification purposes only, and we are in no way implying that our products are original equipment parts. Prices subject to change without notice.



## Replaces Toro Reelmaster 3105-D Parts

27in DPA Cutting Unit - Models 03188, 03189 & 03190  
Reel & Bedknife



Item No	R&R Part No.	OEM Part No.	Description	Qty Req	Order Quantity
---------	--------------	--------------	-------------	---------	----------------

### R&R Reels, Lifetime Guaranteed

1	<b>R133-0182</b>	133-0182	Reel - 5 Blade Razor Series Radial 27x7	1	
---	------------------	----------	---	---	--

*Detail Description: R&R Razor Reels are manufactured from a special high alloy steel and then hardened to RC48-51 to match the temper of our Razor bedknives and original equipment premium series bedknives. All R&R Reels are cylindrically ground on bearing surfaces, relief ground and precision computer balanced for extended bearing and reel life. R&R Products Reels are guaranteed against defects in material and workmanship for the life of the reel under normal use. You can expect up to double the life from Razor reels over standard reels.:*

1	<b>R137-8469</b>	137-8469	Reel - 5 Blade Razor Series Radial Low Drag (RR) w/Bearings and Seals 27x7	1	
---	------------------	----------	--	---	--

*Detail Description: R&R Razor Reels are manufactured from a special high alloy steel and then hardened to RC48-51 to match the temper of our Razor bedknives and original equipment premium series bedknives. All R&R Reels are cylindrically ground on bearing surfaces, relief ground and precision computer balanced for extended bearing and reel life. R&R Products Reels are guaranteed against defects in material and workmanship for the life of the reel under normal use. You can expect up to double the life from Razor reels over standard reels.:*

1	<b>R133-0184</b>	133-0184	Reel - 8 Blade Razor Series Radial 27x7	1	
---	------------------	----------	---	---	--

*Detail Description: R&R Razor Reels are manufactured from a special high alloy steel and then hardened to RC48-51 to match the temper of our Razor bedknives and original equipment premium series bedknives. All R&R Reels are cylindrically ground on bearing surfaces, relief ground and precision computer balanced for extended bearing and reel life. R&R Products Reels are guaranteed against defects in material and workmanship for the life of the reel under normal use. You can expect up to double the life from Razor reels over standard reels.:*

1	<b>R137-8470</b>	137-8470	Reel - 8 Blade Razor Series Radial (RR) w/Bearings and Seals 27x7	1	
---	------------------	----------	---	---	--

*Detail Description: R&R Reel blades are expertly crafted from premium high carbon-boron alloy steel, heat-treated to perfectly complement both R&R and OEM bedknives. Each reel undergoes precision cylindrical grinding on bearing surfaces, followed by relief grinding for optimal performance. Advanced computer balancing ensures extended reel and bearing life. Backed by our lifetime guarantee against defects in materials and craftsmanship under normal use, R&R Reels deliver unmatched durability and cutting precision you can trust.:*

1	<b>R133-8278</b>	133-8278	Reel - 11 Blade Razor Series Radial 27x7	1	
---	------------------	----------	--	---	--

All original equipment manufacturers names and part numbers are used for identification purposes only, and we are in no way implying that our products are original equipment parts. Prices subject to change without notice.



## Replaces Toro Reelmaster 3105-D Parts

27in DPA Cutting Unit - Models 03188, 03189 & 03190  
Reel & Bedknife



Item No	R&R Part No.	OEM Part No.	Description	Qty Req	Order Quantity
---------	--------------	--------------	-------------	---------	----------------

*Detail Description:* R&R Razor Reels are manufactured from a special high alloy steel and then hardened to RC48-51 to match the temper of our Razor bedknives and original equipment premium series bedknives. All R&R Reels are cylindrically ground on bearing surfaces, relief ground and precision computer balanced for extended bearing and reel life. R&R Products Reels are guaranteed against defects in material and workmanship for the life of the reel under normal use. You can expect up to double the life from Razor reels over standard reels.:

1	<b>R137-8471</b>	137-8471	Reel - 11 Blade Razor Series Radial (RR) w/Bearings and Seals 27x7	1	
---	------------------	----------	--	---	--

*Detail Description:* R&R Reel blades are expertly crafted from premium high carbon-boron alloy steel, heat-treated to perfectly complement both R&R and OEM bedknives. Each reel undergoes precision cylindrical grinding on bearing surfaces, followed by relief grinding for optimal performance. Advanced computer balancing ensures extended reel and bearing life. Backed by our lifetime guarantee against defects in materials and craftsmanship under normal use, R&R Reels deliver unmatched durability and cutting precision you can trust.:

### R&R Bedknives, Lifetime Guaranteed

2	<b>R114-9388</b>	114-9388	Bedknife - 27 in Unit - Standard	1	
---	------------------	----------	----------------------------------	---	--

*Detail Description:* R&R Bedknives are manufactured from high carbon-boron alloy steel and then hardened to RC46-49 to match the temper of our reel blades and original equipment reels. Bedknives are surface ground on the top and front edge and straightened three times before being packaged with oil for rust prevention. All R&R Bedknives now have an increased front edge grind for added life. All R&R Bedknives are guaranteed against defects in material and workmanship under normal use for the life of the part.:

2	<b>R114-9390</b>	114-9390	Bedknife - 27 in Unit - Heavy Duty	1	
---	------------------	----------	------------------------------------	---	--

*Detail Description:* R&R Bedknives are manufactured from high carbon-boron alloy steel and then hardened to RC46-49 to match the temper of our reel blades and original equipment reels. Bedknives are surface ground on the top and front edge and straightened three times before being packaged with oil for rust prevention. All R&R Bedknives now have an increased front edge grind for added life. All R&R Bedknives are guaranteed against defects in material and workmanship under normal use for the life of the part.:

### R&R Razor Tool Steel Bedknives, Lifetime Guaranteed

2	<b>R112-8910</b>	112-8910	Bedknife - Razor Tool Steel - 27 High Cut	1	
---	------------------	----------	--	---	--

All original equipment manufacturers names and part numbers are used for identification purposes only, and we are in no way implying that our products are original equipment parts. Prices subject to change without notice.



## Replaces Toro Reelmaster 3105-D Parts

27in DPA Cutting Unit - Models 03188, 03189 & 03190  
Reel & Bedknife



Item No	R&R Part No.	OEM Part No.	Description	Qty Req	Order Quantity
---------	--------------	--------------	-------------	---------	----------------

*Detail Description: R&R Razor bedknives are manufactured from premium alloy tool steel steel and then hardened to RC48-51 to match the temper of our Razor reel blades and original equipment premium series reels. Bedknives are surface ground on the top and front edge and specially packaged for rust prevention. All R&R Bedknives now have an increased front edge grind for added life. All R&R Bedknives are guaranteed against defects in material and workmanship under normal use for the life of the part. You can expect up to double the life over standard bedknives.:*

### Overhaul Kits

10	<b>R114-5430</b>	114-5430	Overhaul Kit - Roller	1	
<i>Detail Description: Includes 4 ea.: R112-7494 Seals; 2 ea.: R302-5 Grease Zerks, R114-3717 Seals, R112-5290 Bearings &amp; R114-3745 Locknuts:</i>					
11	<b>R120-7230</b>	120-7230	Overhaul Kit - Fits DPA Units	1	
<i>Detail Description: Incl 2 ea.: R108-0015, R115-7039, R119-4155, R120-5116, R120-5118, R120-5120, R3296-33, R3296-48 &amp; 4 ea: R106-5344:</i>					
12	<b>R110-9600</b>	110-9600	High HOC Kit	1	
<i>Detail Description: Includes 1 ea.: R120-0404, R120-0405 &amp; 2 ea: R112-7451, R322-16, R445722 &amp; 4 ea.: R106-9758, R104-8300, R453011, R104-8301 &amp; 8 ea: R106-3925:</i>					
13	<b>R131-3233</b>	131-3233	Groomer/Rrb Seal Kit	1	

### Other Parts Available

70	<b>R112-8935</b>	112-8935	Frame - Center - 27 in Unit	1	
71	<b>R127-7109</b>	127-7109	Insert-Threaded - 7 in Reel (RH)	1	
72	<b>R127-7111</b>	127-7111	Insert-Threaded - 7 in Reel (LH)	1	
73	<b>R3231-25</b>	01-173-0610, 30-9970, 3231-25, 3231-3, 900064P	Bolt - Carriage 3/8-16 x 1-1/4	2	
74	<b>R112-8936</b>	112-8936	Tube- Support - 27 in Units	1	

All original equipment manufacturers names and part numbers are used for identification purposes only, and we are in no way implying that our products are original equipment parts. Prices subject to change without notice.



## Replaces Toro Reelmaster 3105-D Parts

27in DPA Cutting Unit - Models 03188, 03189 & 03190  
Reel & Bedknife



Item No	R&R Part No.	OEM Part No.	Description	Qty Req	Order Quantity
75	<b>R112-8942</b>	112-8942	Front Grass Shield Assy - 27 in Units	1	
76	<b>R112-7451</b>	100-9429, 112-7451	Bolt - Hex Tap 3/8-16 x 2-3/4	2	
76	<b>R107-4026</b>	107-4026	Bolt - Hex Tap 3/8-16 x 3-3/4	2	
77	<b>R104-8300</b>	104-8300, 104-8300 , 119-4041	Locknut - 5/16-18 Flanged Y/Zinc	6	
78	<b>R110-4058</b>	110-4058	Bracket - Chain	1	
79	<b>R104-8301</b>	104-8301, 104-9301, 109-6658, 133-7570	Locknut - 3/8-16 Nylon Flanged	2	
80	<b>R107-7400</b>	107-7400	Pin - Lynch	1	
81	<b>R56-9520</b>	56-9520	Bushing - Nyliner	2	
82	<b>R110-1706</b>	110-1706	Deflector	6	
83	<b>R106-3924</b>	106-3924	Bracket - Rear Roller	2	
84	<b>R127-4284</b>	127-4284	Washer - Special	2	
85	<b>R115-3299</b>	115-3299	Seal- Flocked	2	
86	<b>R115-3296</b>	115-3296	Bearing	2	
87	<b>R105-5700</b>	105-5700, 115-5258	Wave Washer - Bearing	1	
88	<b>R112-6967</b>	112-6967	O-Ring	2	
89	<b>R119-0614-01</b>	119-0614-01	Weight	1	

All original equipment manufacturers names and part numbers are used for identification purposes only, and we are in no way implying that our products are original equipment parts. Prices subject to change without notice.



## Replaces Toro Reelmaster 3105-D Parts

27in DPA Cutting Unit - Models 03188, 03189 & 03190  
Reel & Bedknife



Item No	R&R Part No.	OEM Part No.	Description	Qty Req	Order Quantity
90	<b>R101526</b>	01-150-0970, 01-178-0620, 20-53-AGD, 321-11, 3224-8, 323-11, 323-12, 323-31, 323-4, 323-47	Bolt - Hex HD 3/8-16 x 2-1/2 GR5	2	
91	<b>R107-2979</b>	107-2979	Bolt - Shoulder	6	
92	<b>R3234-11</b>	3234-11	Bolt - Hex Washer HD	2	
93	<b>R112-8908-01</b>	112-8908-01	Bedbar - 27 in - Fits OEM Units Only	1	
94	<b>R119-4151</b>	119-4151	Screw - Bedknife 5/16-18 x 17/32	10	
95	<b>R120-0404</b>	120-0404	Bracket- High HOC - LH	1	
<i>Detail Description: Fits 2011 &amp; Newer:</i>					
96	<b>R120-0405</b>	120-0405	Bracket - High HOC - RH	1	
<i>Detail Description: Fits 2011 &amp; Newer:</i>					
97	<b>R3230-30</b>	3230-30	Bolt - Carriage 5/16x4 1/2	4	

All original equipment manufacturers names and part numbers are used for identification purposes only, and we are in no way implying that our products are original equipment parts. Prices subject to change without notice.





## Replaces Toro Reelmaster 3105-D Parts

27in DPA Cutting Unit - Models 03188, 03189 & 03190  
Reel & Bedknife



Item No	R&R Part No.	OEM Part No.	Description	Qty Req	Order Quantity
99	<b>R453011</b>	01-166-0100, 01-166-0120, 01-166-0270, 01-166-0500, 01-166-0600, 01-166-0620, 132-4593, 2356-3, 237-12, 24-10-AD, 24-11-AD, 24-11-BD, 24-12-AD, 24-12-BD, 30-9310, 32-8190, 3256-24, 3256-3, 3256-36, 3256-4, 453011, 47-9950, 48-9220, 513458, 7-0052	Washer - Flat 3/8 SAE Y/Zinc	4	
100	<b>R119-0626</b>	119-0626	Shim - Roller - 1/4 in - Slotted	8	
<i>Tech Note: 2011 &amp; Newer:</i>					
101	<b>R115-7039</b>	115-7039	Screw - Adjuster - Bedbar	2	
101	<b>R137-6130</b>	137-6130	Screw - Adjuster - Hardened - Bedbar	2	
102	<b>R120-5118</b>	120-5118	Shaft - Adjuster	2	
<i>Detail Description: 2012 &amp; Newer:</i>					
103	<b>R106-9623</b>	106-9623	Bolt - Bedbar	2	
104	<b>R3256-74</b>	3256-74	Washer - Flat	1	
105	<b>R106-9618</b>	106-9618	Bushing - Rubber	2	
106	<b>R120-5116</b>	120-5116	Washer - Wave	2	

All original equipment manufacturers names and part numbers are used for identification purposes only, and we are in no way implying that our products are original equipment parts. Prices subject to change without notice.



## Replaces Toro Reelmaster 3105-D Parts

27in DPA Cutting Unit - Models 03188, 03189 & 03190  
Reel & Bedknife



Item No	R&R Part No.	OEM Part No.	Description	Qty Req	Order Quantity
107	<b>R16-9759</b>	16-9759	Link Assy	4	
108	<b>R93-6981</b>	93-6981	Spacer	8	
109	<b>R93-8806</b>	93-8806	Washer-Hardened	16	
110	<b>R108-0015</b>	108-0015	Washer - Flat	2	
111	<b>R119-4155</b>	119-4155	Washer - Hardened	2	
112	<b>R99-2097</b>	99-2097	Detent - Bed Bar Adjuster	2	
113	<b>R120-5120</b>	120-5120	Spring - Compression	2	
114	<b>R106-5344</b>	106-5344	Bushing - Flanged and Keyed	4	
116	<b>R3231-4</b>	01-157-0440, 01-173-0612, 3231-4	Bolt - Carriage 3/8-16 x 1-1/2	2	
117	<b>R322-16</b>	322-16, Apr-00	Bolt - Hex HD 5/16-18 x 1-1/8	2	
118	<b>R3296-48</b>	119-4039, 32146-7, 3296-34, 3296-48	Locknut - 7/16-14 ESNA	2	
119	<b>R3296-33</b>	3296-33	Locknut - 5/8-18 ESNA Jam	12	
120	<b>R93-6688</b>	93-6688	Decal - Warning	1	
120	<b>R137-9706</b>	137-9706	Decal- Warning	1	
121	<b>R61-1950</b>	61-1950	Washer - Nylon - Bed Bar	4	

All original equipment manufacturers names and part numbers are used for identification purposes only, and we are in no way implying that our products are original equipment parts. Prices subject to change without notice.





## Replaces Toro Reelmaster 3105-D Parts

27in DPA Cutting Unit - Models 03188, 03189 & 03190  
Reel & Bedknife



Item No	R&R Part No.	OEM Part No.	Description	Qty Req	Order Quantity
122	<b>R453017</b>	01-166-0050, 01-166-0240, 01-166-0800, 24-13-AD, 24-14-AD, 32-8110, 3256-26, 3256-6, 453017, 69-8980, 87-7270	Washer - Flat 1/2	2	
123	<b>R32128-43</b>	30-8990, 32128-43, 3290-357	Nut - Flanged Whiz - 3/8-16	6	
123	<b>R3296-39</b>	32127-25, 32128-36, 3290-357, 3296-17, 3296-22, 3296-39, 915663P, 99-7443	Locknut - 3/8-16 Nylon	6	
124	<b>R107-7773</b>	107-7773	Bolt - Soc HD Cap 5/16-18 x 2-1/2	1	
125	<b>R323-6</b>	01-150-0010, 01-178-0608, 20-47-AD, 20-47-AGD, 3224-2, 323-6, 49-3510, 908034P, 908332	Bolt - Hex HD 3/8-16 x 1 GR5 YZ	2	

All original equipment manufacturers names and part numbers are used for identification purposes only, and we are in no way implying that our products are original equipment parts. Prices subject to change without notice.



## Replaces Toro Reelmaster 3105-D Parts

27in DPA Cutting Unit - Models 03188, 03189 & 03190  
Reel & Bedknife



Item No	R&R Part No.	OEM Part No.	Description	Qty Req	Order Quantity
126	<b>R302-5</b>	21-6010, 302-11, 302-37, 302-47, 302-5, 302-57, 302-58, 302-6, 31-0300, 32-9660, 60-0800, 62-3880, 92-4181	Fitting - Grease	2	
127	<b>R92-2601</b>	92-2601	Snap Ring	2	
128	<b>R445722</b>	30-8980, 32128-2, 32128-20, 32128-20	Nut - Serrated Washer	2	
129	<b>R170714</b>	302-34, 302-39, 62-3520	Fitting - Pressure Relief	2	
130	<b>R94-8945</b>	94-8945	Bushing - Bronze - Link Bar	8	
131	<b>R322-14</b>	01-150-0830, 01-178-0524, 30-8900, 322-14	Bolt - Hex HD 5/16-18 x 3 GR5	1	
132	<b>R3234-7</b>	3234-7	Bolt - Hex Washer HD 5/16-18 x 5/8	4	
133	<b>R125-2796</b>	125-2796	Bracket- Front HOC	2	
<i>Detail Description: Fits 2013 &amp; Newer:</i>					
135	<b>R110-4088-03</b>	110-4088-03, 119-8010-03	Kickstand	1	
136	<b>R137-5976</b>	137-5976	Side Plate Assy - 7 in LH Aluminum	1	

All original equipment manufacturers names and part numbers are used for identification purposes only, and we are in no way implying that our products are original equipment parts. Prices subject to change without notice.



## Replaces Toro Reelmaster 3105-D Parts

27in DPA Cutting Unit - Models 03188, 03189 & 03190  
Reel & Bedknife



Item No	R&R Part No.	OEM Part No.	Description	Qty Req	Order Quantity
137	<b>R137-5979</b>	137-5979	Side Plate Assy - 7 in RH Aluminum	1	
138	<b>R125-1997</b>	125-1997	Grass Shield - Rear 27 in Unit	1	
139	<b>R130-8094</b>	130-8094	Washer	2	
140	<b>R3231-40</b>	3231-40	Bolt - Carriage 3/8-16 x 2 1/4	8	
141	<b>R3245-35</b>	3245-35	Screw - Set 1/4-28 x 1/4	1	

All original equipment manufacturers names and part numbers are used for identification purposes only, and we are in no way implying that our products are original equipment parts. Prices subject to change without notice.