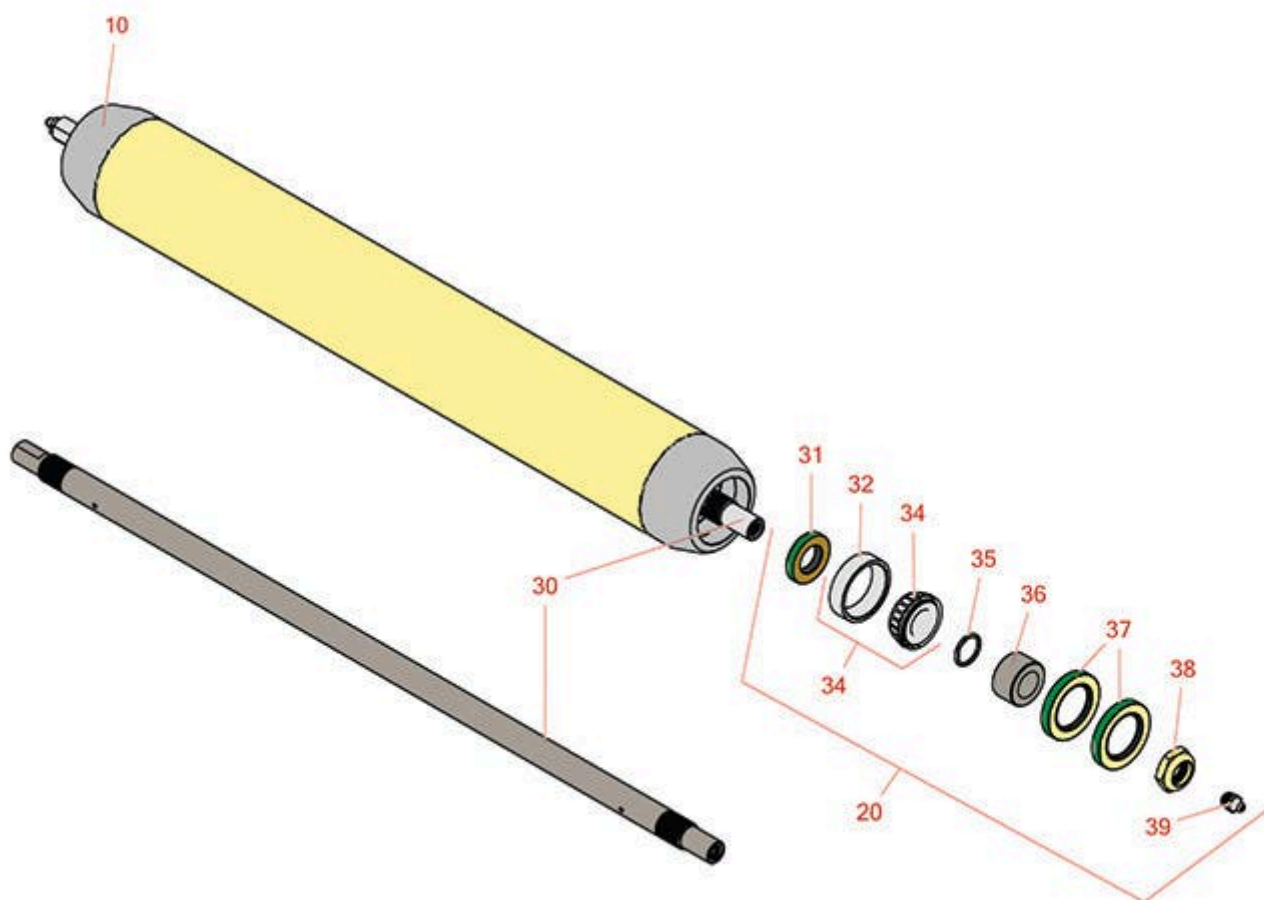




# Replaces John Deere 1420 Rotary Mower Parts

V-Flex 7-Iron Mower Deck - Model 9244  
Rear Roller



All original equipment manufacturers names and part numbers are used for identification purposes only, and we are in no way implying that our products are original equipment parts. Prices subject to change without notice.



# Replaces John Deere 1420 Rotary Mower Parts

V-Flex 7-Iron Mower Deck - Model 9244  
Rear Roller



Item No	R&R Part No.	OEM Part No.	Description	Qty Req	Order Quantity
---------	--------------	--------------	-------------	---------	----------------

## ***Roller***

10	<b>RAET11263</b>	AET11263, AMT2967	Roller - Smooth Tubular Steel	1	
----	------------------	----------------------	-------------------------------	---	--

*Detail Description: Constructed with a through shaft, this heavy duty roller uses greasable tapered bearings for extended life.:*

## ***Overhaul Kits***

20	<b>RAET10632</b>	AET10632	Overhaul Kit - Roller	1	
----	------------------	----------	-----------------------	---	--

*Detail Description: Includes 4 ea: RET15755 Seal; 2 ea: R237-54 O-Ring, R253-122 Seal, R254-78 Bearing, R254-79 Cup, R3296-15 Locknut, R471219 Grease Zerk, RET15726 Sleeve, RET15756 Seal:*

## ***Other Parts Available***

30	<b>RET17515</b>	ET17515	Shaft - Roller	1	
31	<b>RET15756</b>	ET15756, MT1739, MT739	Seal	2	
32	<b>R254-79</b>	JD8226	Cup - Bearing	2	

*Detail Description: Use R254-79M installation mandrel to properly install race.:*

33	<b>R254-78</b>	JD8188	Tapered Bearing Cone	2	
34	<b>R500534</b>		Bearing - with Cup	2	

*Detail Description: Kit includes: 1 ea R254-78- Bearing Cone & R254-79 Bearing Cone:*

35	<b>R237-54</b>	U46731, U6731	O-Ring - Small	2	
36	<b>RET15726</b>	ET15726, RET15726	Sleeve - Wear Hardened	2	
37	<b>RET15755</b>	ET15755	Seal - Oil	4	
38	<b>R3296-15</b>	N101345	Locknut - 3/4-16 Nylon Jam	2	

All original equipment manufacturers names and part numbers are used for identification purposes only, and we are in no way implying that our products are original equipment parts. Prices subject to change without notice.



# Replaces John Deere 1420 Rotary Mower Parts

V-Flex 7-Iron Mower Deck - Model 9244  
Rear Roller



Item No	R&R Part No.	OEM Part No.	Description	Qty Req	Order Quantity
39	R471219	471219, 471231, JD7759, JD7798	Zerk - Grease	2	

All original equipment manufacturers names and part numbers are used for identification purposes only, and we are in no way implying that our products are original equipment parts. Prices subject to change without notice.