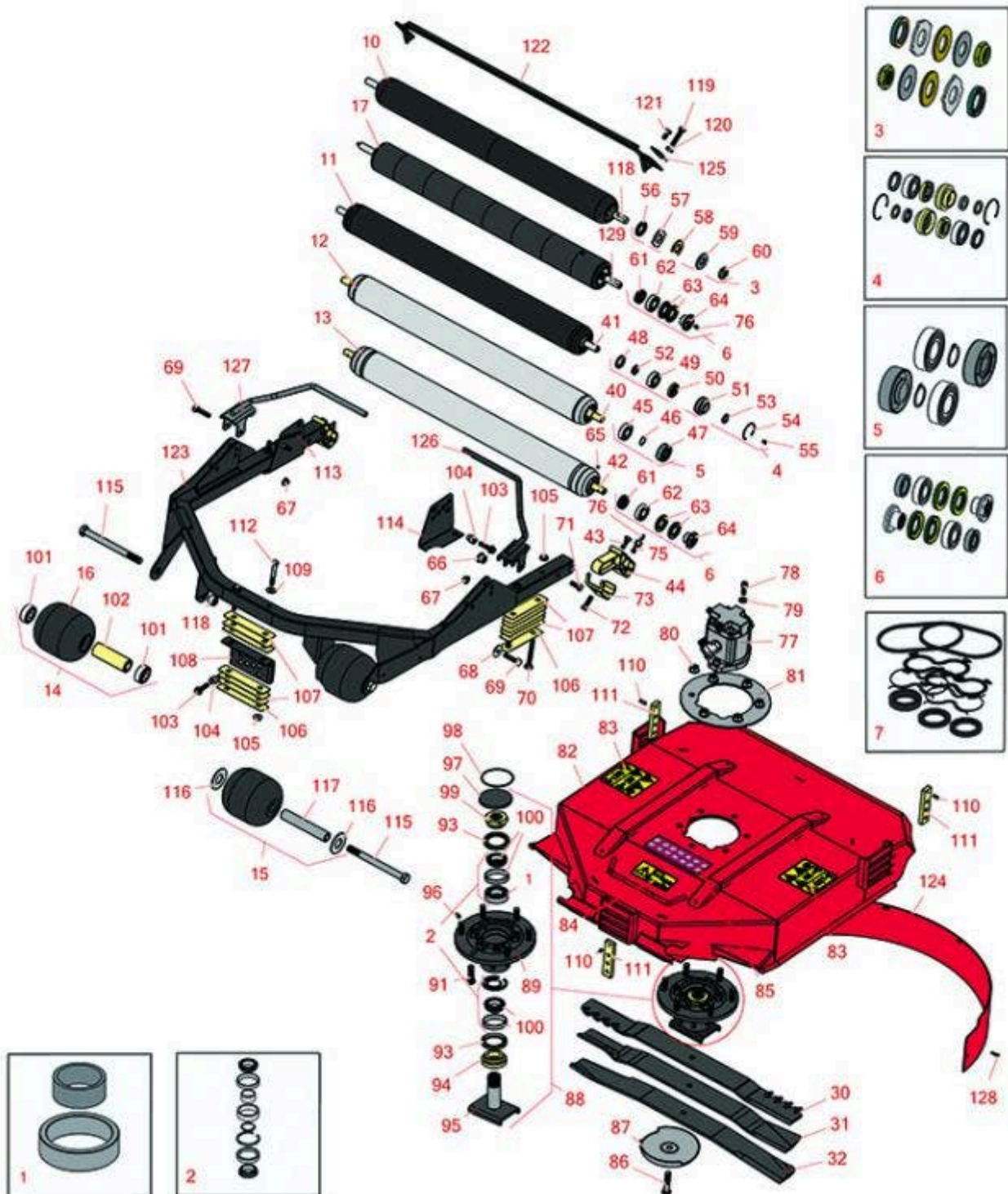
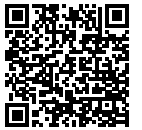




Replaces Toro Groundsmaster 3500-G Parts

Traction Unit - Model 30809
27in Rotary Unit - Model 30834



All original equipment manufacturers names and part numbers are used for identification purposes only, and we are in no way implying that our products are original equipment parts. Prices subject to change without notice.



Replaces Toro Groundsmaster 3500-G Parts

Traction Unit - Model 30809
27in Rotary Unit - Model 30834



| Item No | R&R Part No. | OEM Part No. | Description | Qty Req | Order Quantity |
|--|------------------|------------------------------------|-------------------------------------|---------|----------------|
| Overhaul Kits | | | | | |
| 1 | R100-5704 | 100-5704 | Spacer - Set Fits R100-5703 | 1 | |
| 2 | R100-5703 | 100-5703 | Bearing - w/Spacer Assy | 1 | |
| 3 | R101399 | | Overhaul Kit - UHMW 2 Pc Roller | 1 | |
| <i>Tech Note: Fits all R&R 2-1/2" - 3-1/2" Dia. Black UHMW Plastic Rollers that do not use ball bearings.. Includes 2 ea.: R1503230 Star Washers, R1503470 Seals, R150333 Thrust Washers, R3296-15 Locknuts, R1503471 Bronze Thrust Washers:</i> | | | | | |
| 4 | R106-9606 | 106-9606 | Overhaul Kit - Roller | 1 | |
| <i>Tech Note: Include 2 ea: R343667 Bearings, R253-70 Seals, R32120-62 Retaining Rings, R93-1251 Seals, R93-1252 Seals, R93-2931 Washers, R93-3007 Seals:</i> | | | | | |
| 5 | R107-1595 | 107-1595 | Overhaul Kit - Roller | 1 | |
| <i>Tech Note: Includes 2 ea.: R251-347 Bearings, R32120-15 Snap Rings & R150614 Seals:</i> | | | | | |
| 6 | R114-5430 | 114-5430 | Overhaul Kit - Roller | 1 | |
| <i>Tech Note: Includes 4 ea.: R112-7494 Seals; 2 ea.: R302-5 Grease Zerks, R114-3717 Seals, R112-5290 Bearings & R114-3745 Locknuts:</i> | | | | | |
| 7 | R117-0235 | 117-0235 | Seal Kit - Fits R117-5141 Hyd Motor | 1 | |
| R&R Rollers | | | | | |
| 10 | R1013902 | | Roller - Smooth UHMW Polyethylene | 1 | |
| <i>Tech Note: Machined from solid UHMW, this low maintenance roller uses a 1" solid stainless steel shaft and requires no grease. UHMW material prevents build-up of debris.:</i> | | | | | |
| 11 | R107-1996 | 107-1996, 112-5273, 112-5291 | Roller - Regreasable | 1 | |
| 12 | R105-6772 | 105-1227, 105-6772 | Roller - Smooth 3in | 1 | |

All original equipment manufacturers names and part numbers are used for identification purposes only, and we are in no way implying that our products are original equipment parts. Prices subject to change without notice.



Replaces Toro Groundsmaster 3500-G Parts

Traction Unit - Model 30809
27in Rotary Unit - Model 30834



| Item No | R&R Part No. | OEM Part No. | Description | Qty Req | Order Quantity |
|---|---------------------|--|---|---------|----------------|
| 13 | R112-5265 | 112-5265, 112-5272 | Roller Assy - Regreasable | 1 | |
| 14 | R136-2908 | 104-1092, 115-3418, 136-2908 | Roller Assy - Cast Iron | 2 | |
| 15 | R150495 | | Roller - Smooth UHMW Polyethelyne Front 5 in Dia | 2 | |
| 16 | R104-1093 | 104-1093 | Roller - Cast Iron | 2 | |
| 17 | R1013910 | | Roller - Fusion Smooth UHMW Polyethylene | 1 | |
| <i>Tech Note: Machined from solid UHMW plastic that prevents build-up of debris. This roller turns on precision stainless ball bearings.:</i> | | | | | |
| 30 | RRB4065-2700 | 107-0235-03 | Mower Blade - Mulcher 27 x 2.5in x 1/2 Mt Hole | 1 | |
| 31 | R108-9026-03 | 108-9026-03 | Mower Blade - 27 in Combo | 1 | |
| 32 | R100-5754-03 | 100-5754, 100-5754-03, 105-9810-03 | Mower Blade | 1 | |
| Other Part Available | | | | | |
| 40 | R104-9480 | 104-9480 | Shaft - Roller | 1 | |
| 41 | R107-1984 | 107-1984 | Shaft - Roller | 1 | |
| 42 | R112-5266 | 112-5266 | Shaft- Long - Rear Roller | 1 | |
| 42 | R117-5100 | 117-5100 | Shaft- Long - Rear Roller - Hardened | 1 | |

All original equipment manufacturers names and part numbers are used for identification purposes only, and we are in no way implying that our products are original equipment parts. Prices subject to change without notice.



Replaces Toro Groundsmaster 3500-G Parts

Traction Unit - Model 30809
27in Rotary Unit - Model 30834



| Item No | R&R Part No. | OEM Part No. | Description | Qty Req | Order Quantity |
|---------|------------------|--|---------------------------------|---------|----------------|
| 43 | R323-6 | 01-150-0010, 01-178-0608, 20-47-AD, 20-47-AGD, 3224-2, 323-6, 49-3510, 908034P, 908332 | Bolt - Hex HD 3/8-16 x 1 GR5 YZ | 2 | |
| 44 | R112-5268 | 100-5768, 100-5768-01, 104-9487, 105-3991, 112-5268 | Mount - Roller - Rotary Deck | 2 | |
| 45 | R251-347 | 251-347, 72-5690 | Bearing - Ball | 2 | |
| 46 | R32120-15 | 32120-15 | Ring - Snap | 2 | |
| 47 | R150614 | 99-3842 | Seal | 2 | |
| 48 | R93-3007 | 93-3007 | Seal | 2 | |
| 49 | R343667 | 109966, 251-6, 38-7820 | Bearing - Ball | 2 | |
| 50 | R93-1251 | 93-1251 | Seal | 2 | |
| 51 | R93-1252 | 93-1252 | Seal - Outer | 2 | |
| 52 | R253-70 | 253-70 | Seal | 2 | |
| 53 | R93-2931 | 93-2931 | Washer - Roller Seal | 2 | |
| 54 | R32120-62 | 32120-62 | Ring - Retaining | 2 | |
| 55 | R1851 | 107-1997 | Fitting - Grease - Flush | 2 | |
| 56 | R1503470 | | Seal - Inner Wiper | 2 | |
| 57 | R1503230 | | Washer - Thrust Outer Keyed | 2 | |

All original equipment manufacturers names and part numbers are used for identification purposes only, and we are in no way implying that our products are original equipment parts. Prices subject to change without notice.



Replaces Toro Groundsmaster 3500-G Parts

Traction Unit - Model 30809
27in Rotary Unit - Model 30834



| Item No | R&R Part No. | OEM Part No. | Description | Qty Req | Order Quantity |
|---------|------------------|--|---------------------------------|---------|----------------|
| 58 | R1503471 | | Washer - Thrust SAE660 Bronze | 2 | |
| 59 | R150333 | | Washer - Flat Keyed Outer SS | 2 | |
| 60 | R3296-15 | 116-7306, 32118-5, 32127-23, 32127-47, 3296-15 | Locknut - 3/4-16 Nylon Jam | 2 | |
| 61 | R114-3717 | 114-3717 | Seal | 2 | |
| 62 | R112-5290 | 112-5290, 251--346, 251-346, 72-5430 | Bearing - Stainless | 2 | |
| 63 | R112-7494 | 112-7494 | Seal | 4 | |
| 64 | R114-3745 | 114-3745, 114-5411 | Locknut - Bearing - Stainless | 2 | |
| 65 | R150690 | 108-0989 | Screw - Set 1/4-20 x 1/4 | 2 | |
| 66 | R95-8803 | 95-8803 | Bushing - Flange | 2 | |
| 67 | R104-8301 | 104-8301, 104-9301, 109-6658, 133-7570 | Locknut - 3/8-16 Nylon Flanged | 2 | |
| 68 | R93-8806 | 93-8806 | Washer-Hardened | 2 | |
| 69 | R323-11 | 01-150-1440, 01-178-0618, 20-52-AD, 3224-7, 323-11 | Bolt - 3/8-16 x 2 1/4 GR5 | 6 | |
| 70 | R3231-9 | 3231-9 | Bolt - Carriage 3/8-16 x 2 3/4" | 4 | |
| 71 | R3234-11 | 3234-11 | Bolt - Hex Washer HD | 4 | |

All original equipment manufacturers names and part numbers are used for identification purposes only, and we are in no way implying that our products are original equipment parts. Prices subject to change without notice.



Replaces Toro Groundsmaster 3500-G Parts

Traction Unit - Model 30809
27in Rotary Unit - Model 30834



| Item No | R&R Part No. | OEM Part No. | Description | Qty Req | Order Quantity |
|---------|------------------|--|------------------------------|---------|----------------|
| 72 | R400264 | 01-150-0180, 01-178-0610, 20-48-AD, 20-48-AGD, 32-9160, 3224-3, 323-29, 323-7, 400264, 908035P | Bolt - Hex HD 3/8-16 x 1-1/4 | 2 | |
| 73 | R107-7816 | 107-7816 | Bracket-Skid | 2 | |
| 75 | R112-5270 | 112-5270 | Screw Assy - Roller Shaft | 2 | |
| 76 | R302-5 | 21-6010, 302-11, 302-37, 302-47, 302-5, 302-57, 302-58, 302-6, 31-0300, 32-9660, 60-0800, 62-3880, 92-4181 | Fitting - Grease | 2 | |
| 77 | R117-5141 | 105-9820, 105-9872, 117-5141 | Hydraulic Motor | 1 | |
| 78 | R3274-7 | 3247-7, 3274-7 | Bolt - Soc HD Cap 3/8-16 x 1 | 2 | |

Tech Note: 2002 to 2012 only:

All original equipment manufacturers names and part numbers are used for identification purposes only, and we are in no way implying that our products are original equipment parts. Prices subject to change without notice.



Replaces Toro Groundsmaster 3500-G Parts

Traction Unit - Model 30809
27in Rotary Unit - Model 30834



| Item No | R&R Part No. | OEM Part No. | Description | Qty Req | Order Quantity |
|--------------------------------------|---------------------|--|------------------------------|---------|----------------|
| 79 | R453011 | 01-166-0100, 01-166-0120, 01-166-0270, 01-166-0500, 01-166-0600, 01-166-0620, 132-4593, 2356-3, 237-12, 24-10-AD, 24-11-AD, 24-11-BD, 24-12-AD, 24-12-BD, 30-9310, 32-8190, 3256-24, 3256-3, 3256-36, 3256-4, 453011, 47-9950, 48-9220, 513458, 7-0052 | Washer - Flat 3/8 SAE Y/Zinc | 2 | |
| <i>Tech Note: 2002 to 2012 only:</i> | | | | | |
| 80 | R32128-49 | 32128-49 | Nut - 1/2-13 Hex Flange | 6 | |
| 81 | R104-1051-03 | 104-1051-03 | Plate- Spindle | 1 | |
| 82 | R127-6389 | 115-3479, 127-6389 | Deck Chamber Assy | 1 | |
| 83 | R117-4764 | 117-4764 | Decal - Danger | 2 | |
| 84 | R93-7818 | 93-7818 | Decal - Blade Torque | 1 | |
| 85 | R121-3627 | 104-1086, 121-3627 | Decal - HOC | 1 | |
| 86 | R92-5816 | 92-5816 | Bolt - Hex HD 1/2-20 x 2-1/4 | 1 | |

All original equipment manufacturers names and part numbers are used for identification purposes only, and we are in no way implying that our products are original equipment parts. Prices subject to change without notice.



Replaces Toro Groundsmaster 3500-G Parts

Traction Unit - Model 30809
27in Rotary Unit - Model 30834



| Item No | R&R Part No. | OEM Part No. | Description | Qty Req | Order Quantity |
|---|------------------|---|-----------------------------------|---------|----------------|
| 87 | R72-9361 | 27-1000, 27-1001, 72-9360, 72-9361 | Cup - Anti-Scalp | 1 | |
| 88 | R115-3435 | 100-5700, 115-3435 | Spindle Assy | 1 | |
| <i>Tech Note: Ser# 311000001-319999999:</i> | | | | | |
| 88 | R121-3666 | 121-3666 | Spindle Assy | 1 | |
| <i>Tech Note: Ser# 405700000-406999999:</i> | | | | | |
| 89 | R115-3434 | 100-5701, 115-3434 | Housing - Spindle | 1 | |
| 91 | R10-6830 | 10-6830, 75-9440 | Stud - Wheel 1/2-20 x 1 3/4 | 6 | |
| <i>Tech Note: 2012 & Newer:</i> | | | | | |
| 91 | R325-5 | 01-150-0250, 01-178-0810, 19-8000, 20-86-AGD, 3226-1, 325-5, 513375 | Bolt - Hex HD 1/2-13 x 1-1/4 | 6 | |
| <i>Tech Note: Up to 2012:</i> | | | | | |
| 93 | R253-154 | 253-154 | Seal - Spindle | 2 | |
| 94 | R92-9800 | 69-6950, 69-6980, 92-9800 | Spacer - Spindle | 1 | |
| 94 | R138-6416 | 138-6416 | Spacer - Spindle Shaft | 3 | |
| 95 | R100-5705 | 100-5705 | Spindle Assy | 1 | |
| 96 | R302-62 | 302-62 | Fitting - Grease - Extended Shank | 2 | |

All original equipment manufacturers names and part numbers are used for identification purposes only, and we are in no way implying that our products are original equipment parts. Prices subject to change without notice.



Replaces Toro Groundsmaster 3500-G Parts

Traction Unit - Model 30809
27in Rotary Unit - Model 30834



| Item No | R&R Part No. | OEM Part No. | Description | Qty Req | Order Quantity |
|---|---------------------|-----------------------------------|---|---------|----------------|
| 97 | R94-2703 | 94-2703 | Plug - Plastic Spindle Housing | 1 | |
| 98 | R237-161 | 237-161 | O-Ring | 1 | |
| 99 | R100-5709 | 100-5709 | Nut - Special Spindle | 1 | |
| 100 | R49-8320 | 26-1730, 49-8320 | Bearing Assy - Spindle Set | 2 | |
| <i>Tech Note: Includes Retaining Rings, Spacers, Bearings & Cups:</i> | | | | | |
| 101 | R108-9017 | 108-9017, 120-3366 | Bearing-Stainless | 4 | |
| 101 | R93-4237 | 93-4237 | Bearing | 4 | |
| 102 | R100-5762 | 100-5762 | Spacer - Bearing Roller | 2 | |
| 103 | R3234-24 | 3234-24, 3234-8, 66-9301 | Bolt - Hex Ser Was HD 3/8-16 x 1-1/4 | 6 | |
| 104 | R105-9226 | 105-9226 | Spacer-HOC | 6 | |
| 104 | R121-3575 | 121-3575 | Spacer - HOC | 6 | |
| 105 | R32128-43 | 30-8990, 32128-43, 3290-357 | Nut - Flanged Whiz - 3/8-16 | 6 | |
| 106 | R104-4641 | 104-4641 | Shim - HOC - .030 | 3 | |
| 107 | R100-5799 | 100-5799 | Shim - HOC .060 | 18 | |
| 108 | R104-1052-03 | 104-1052-01, 104-1052-03 | Bracket- HOC - Front | 1 | |
| 109 | R80-6990 | 80-6990 | Washer - Hardened | 2 | |
| 110 | R158 | 32121-3 | Pin - Roll 3/16 x 3/4 | 3 | |
| 111 | R105-9225 | 105-9225 | Plate Assy - HOC | 3 | |

Tech Note: Ser# 316000001-403200000:

All original equipment manufacturers names and part numbers are used for identification purposes only, and we are in no way implying that our products are original equipment parts. Prices subject to change without notice.



Replaces Toro Groundsmaster 3500-G Parts

Traction Unit - Model 30809
27in Rotary Unit - Model 30834



| Item No | R&R Part No. | OEM Part No. | Description | Qty Req | Order Quantity |
|---|---------------------|--|----------------------------------|---------|----------------|
| 111 | R136-2921 | 136-2921 | HOC Plate Assy | 3 | |
| <i>Tech Note: Ser# 403200001-406999999:</i> | | | | | |
| 112 | R101526 | 01-150-0970, 01-178-0620, 101526, 20-53-AGD, 321-11, 3224-8, 323-11, 323-12, 323-31, 323-4, 323-47 | Bolt - Hex HD 3/8-16 x 2-1/2 GR5 | 2 | |
| 112 | R3274-50 | 3274-50 | Screw-Hsh | 2 | |
| 113 | R100-5797-03 | 100-5797-01, 100-5797-03 | Bracket - HOC - RH | 1 | |
| 114 | R104-4624-03 | 104-4624-01, 104-4624-03 | Bracket - H.O.C. - LH | 1 | |
| 115 | R327-15 | 327-15 | Bolt - Axle | 2 | |
| 116 | R150497 | R7R ONLY | Washer - Fits R150495 Only | 2 | |
| 117 | R150496 | | Wear Sleeve - Fits R150495 Only | 1 | |
| 118 | R1013831 | | Shaft - 1in Stainless Steel | 1 | |
| 119 | R323-53 | 323-53, 57-3210 | Bolt - Hex HD 3/8-16 x 1-3/4 | 2 | |
| 120 | R3217-7 | 01-188-0616, 1441, 22-13-AJD, 3217-7, 513296, 513415, 513425, 915113P | Nut - 3/8-16 Hex Plated | 2 | |

All original equipment manufacturers names and part numbers are used for identification purposes only, and we are in no way implying that our products are original equipment parts. Prices subject to change without notice.



Replaces Toro Groundsmaster 3500-G Parts

Traction Unit - Model 30809
27in Rotary Unit - Model 30834



| Item No | R&R Part No. | OEM Part No. | Description | Qty Req | Order Quantity |
|---------|---------------------|--|---------------------------------------|---------|----------------|
| 121 | R400258 | 01-150-0800, 01-178-0600, 01-178-0606, 20-45-AD, 31-0200, 31-9910, 3224-1, 323-4, 400258 | Bolt - Hex HD 3/8-16 x 3/4 | 2 | |
| 122 | R104-9492-03 | 104-9492-03 | Scraper - Rear Roller | 1 | |
| 123 | R100-5780-03 | 100-5780-01, 100-5780-03 | Deck Frame Assy | 1 | |
| 124 | R108-9025-01 | 108-9025-01 | Baffle - Mulching - 27 in Deck | 1 | |
| 125 | R105-1230-03 | 105-1230-03 | Plate - Scraper | 2 | |
| 126 | R112-9902-03 | 112-9902-03 | Foot Guard Assy - LH | 1 | |
| 127 | R112-9901-03 | 112-9901-03 | Foot Guard Assy - RH | 1 | |
| 128 | R3274-31 | 3274-31, 3274-68, 46-8560 | Screw - Button HD Soc CS 1/4-20 x 5/8 | 5 | |
| 129 | R1013911 | 1013911 | Shaft | 1 | |

All original equipment manufacturers names and part numbers are used for identification purposes only, and we are in no way implying that our products are original equipment parts. Prices subject to change without notice.