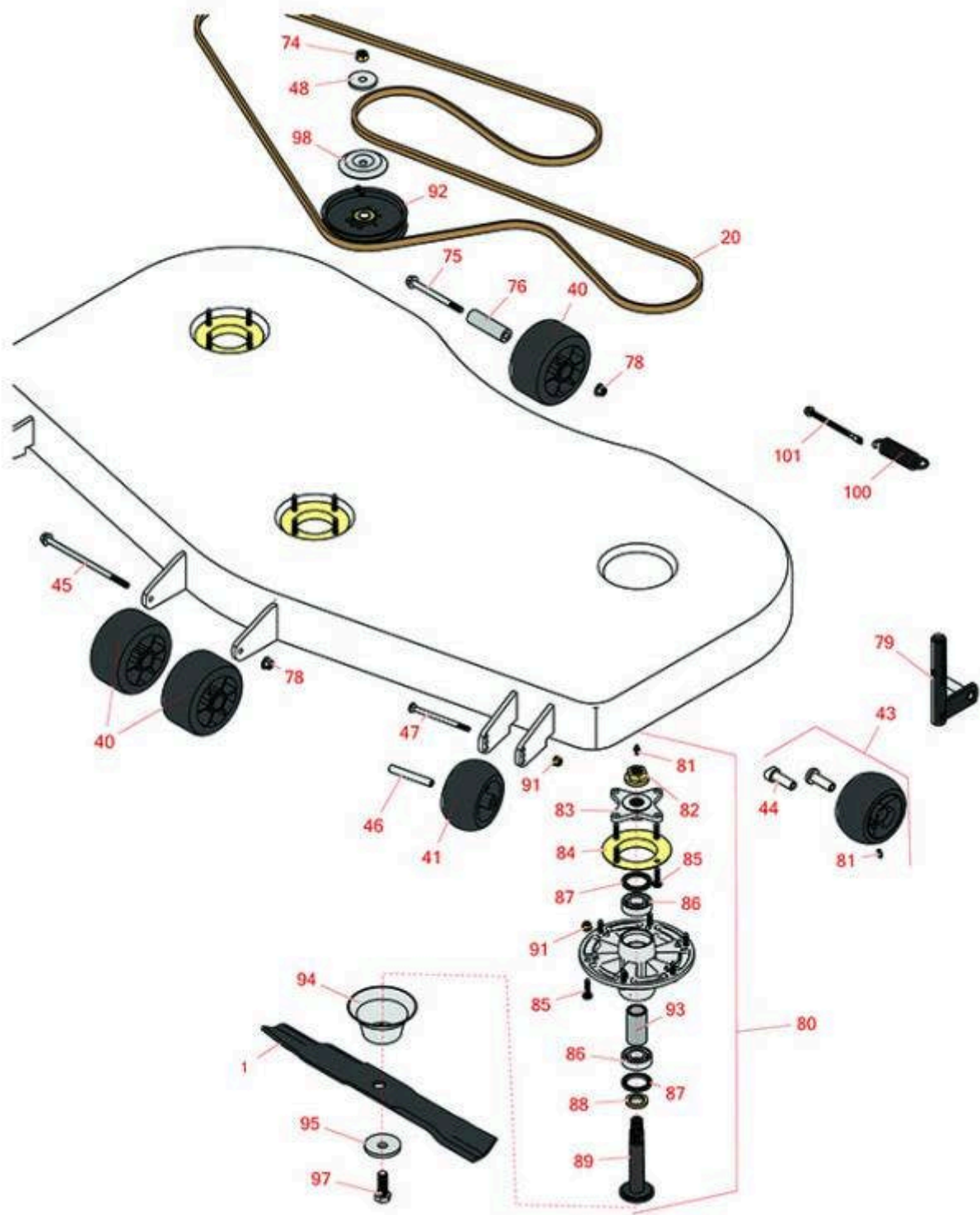




# Replaces John Deere 1585 Rotary Mower Parts

Traction Unit  
60in Deck Parts



All original equipment manufacturers names and part numbers are used for identification purposes only, and we are in no way implying that our products are original equipment parts. Prices subject to change without notice.



# Replaces John Deere 1585 Rotary Mower Parts

Traction Unit  
60in Deck Parts



Item No	R&R Part No.	OEM Part No.	Description	Qty Req	Order Quantity
<b>Rotary Blades</b>					
1	<b>RM168223</b>	M168223	Rotary Blade - 21"	3	
<b>Belts &amp; Pullies</b>					
20	<b>RTC32986</b>	TCU32986	Belt - V - 60 in Deck	1	
<b>Other Parts Available</b>					
40	<b>RTC34060</b>	TCU34060	Roller - 5 1/2 x 3	3	
41	<b>RTC18744</b>	TCU18744, UC28193	Wheel - 5 in x 2 3/4	2	
43	<b>RAM125172</b>	AM125172	Wheel Kit - Gage Wheel	2	
44	<b>RM111490</b>	M111490	Bushing - Concave	1	
45	<b>R19M10348</b>	19M10348	Bolt- M10 x 200 w/Washer	1	
46	<b>RTC19299</b>	TCU19299	Axle Bushing	2	
47	<b>R03M7268</b>	03M7268	Bolt - M8 x 120 Carriage 8.8	2	
48	<b>RM132309</b>	M132309	Spacer	2	
74	<b>R14M7401</b>	14M7401	Locknut - 12mm x 1.75	2	
75	<b>R19M7944</b>	19M7944	Bolt - M10-1.5 x 120 Hx HD Fl Cl 10.9	4	
76	<b>RTC28739</b>	TCU28739	Axle	1	
78	<b>R14M7465</b>	14M7465	Lock Nut - M10-1.50 Fl	10	
79	<b>RAM129501</b>	AM129501	Arm	1	
80	<b>RTCA24881</b>	TCA24881	Spindle - Includes RM134305; Sub For TCA51058; Housing Assembly	3	
81	<b>R471217</b>	JD7803	Fitting - Grease	4	
82	<b>RM123569</b>	M123569	Flange Nut	3	

All original equipment manufacturers names and part numbers are used for identification purposes only, and we are in no way implying that our products are original equipment parts. Prices subject to change without notice.



# Replaces John Deere 1585 Rotary

## Mower Parts

*Traction Unit*

*60in Deck Parts*



Item No	R&R Part No.	OEM Part No.	Description	Qty Req	Order Quantity
83	<b>RTC38142</b>	TCU38142	Hub - Sub For TCU51119 Or TCU14182	3	
84	<b>RTC51223</b>	TCU51223	Deflector - Grass	3	
85	<b>R19M7868</b>	19M7868	Bolt - M8-1.25 x 30 HHF	18	
86	<b>RM88251</b>	M169375, M88251	Bearing - Spindle	6	
87	<b>RM127198</b>	M127198	Seal	6	
88	<b>RM163060</b>	M133398, M163060	Washer - Replaces RM133398	3	
89	<b>RM134382</b>	M134382	Spindle - 25 mm w/M12-1.75 Blade Bolt Thrd	3	
89	<b>RM163059</b>	M163059	Spindle - 25 mm w/M16-2.0 Blade Bolt Thrd	3	
91	<b>R14M7396</b>	14M7396	Locknut - Flanged Nyloc	20	
92	<b>RTCA17524</b>	TCA17524	Idler Pulley - 5 in Flat Dia with .75 in Brg ID	1	
93	<b>RM163058</b>	M127517, M163058	Bushing - Sub For M127517	3	
94	<b>RM163053</b>	M163053	Grass Deflector - Spindle	3	
95	<b>RM123522</b>	M123522	Washer - Belleville - Blade Bolt	3	
97	<b>R19M7489</b>	19M7489	Bolt Hex HD - M16 x 45 Gr 10.9	3	
98	<b>RM133598</b>	M133598	Shield	2	
100	<b>RM136044</b>	M136044	Spring - Extension	1	
101	<b>RM141764</b>	M141764	Eyebolt - Includes Flanged Locknut	1	

All original equipment manufacturers names and part numbers are used for identification purposes only, and we are in no way implying that our products are original equipment parts. Prices subject to change without notice.