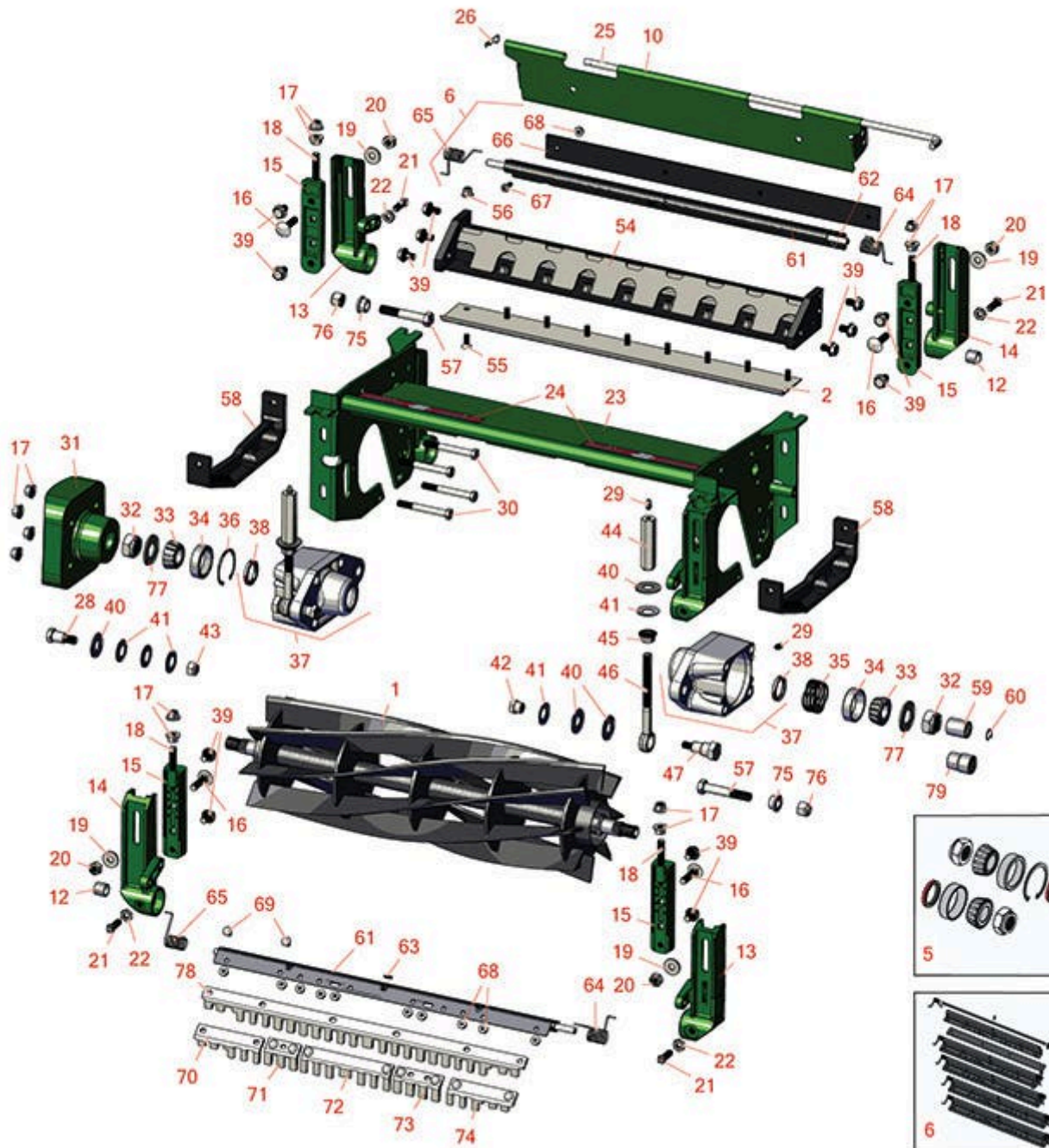




# Replaces John Deere 3235 Reel Mower

## Parts

Heavy Cutting Unit  
Reel & Bedknife



All original equipment manufacturers names and part numbers are used for identification purposes only, and we are in no way implying that our products are original equipment parts. Prices subject to change without notice.



# Replaces John Deere 3235 Reel Mower Parts

Heavy Cutting Unit  
Reel & Bedknife



Item No	R&R Part No.	OEM Part No.	Description	Qty Req	Order Quantity
---------	--------------	--------------	-------------	---------	----------------

## R&R Reels, Lifetime Guaranteed

1	<b>RAET11159</b>	AMT2893	Reel - 8 Blade	1
---	------------------	---------	----------------	---

*Detail Description: R&R Reel blades are expertly crafted from premium high carbon-boron alloy steel, heat-treated to perfectly complement both R&R and OEM bedknives. Each reel undergoes precision cylindrical grinding on bearing surfaces, followed by relief grinding for optimal performance. Advanced computer balancing ensures extended reel and bearing life. Backed by our lifetime guarantee against defects in materials and craftsmanship under normal use, R&R Reels deliver unmatched durability and cutting precision you can trust.:*

1	<b>RAMT2895</b>	AMT2895	Reel - 5 Blade	1
---	-----------------	---------	----------------	---

*Detail Description: R&R Reel blades are expertly crafted from premium high carbon-boron alloy steel, heat-treated to perfectly complement both R&R and OEM bedknives. Each reel undergoes precision cylindrical grinding on bearing surfaces, followed by relief grinding for optimal performance. Advanced computer balancing ensures extended reel and bearing life. Backed by our lifetime guarantee against defects in materials and craftsmanship under normal use, R&R Reels deliver unmatched durability and cutting precision you can trust.:*

1	<b>RAMT2894</b>	AMT2894	Reel - 10 Blade	1
---	-----------------	---------	-----------------	---

*Detail Description: R&R Reel blades are expertly crafted from premium high carbon-boron alloy steel, heat-treated to perfectly complement both R&R and OEM bedknives. Each reel undergoes precision cylindrical grinding on bearing surfaces, followed by relief grinding for optimal performance. Advanced computer balancing ensures extended reel and bearing life. Backed by our lifetime guarantee against defects in materials and craftsmanship under normal use, R&R Reels deliver unmatched durability and cutting precision you can trust.:*

## R&R Bedknives, Lifetime Guaranteed

2	<b>RET17751</b>	ET17751	Bedknife - Standard 12mm	1
---	-----------------	---------	--------------------------	---

*Detail Description: R&R Bedknives are manufactured from high carbon-boron alloy steel and then hardened to RC46-49 to match the temper of our reel blades and original equipment reels. Bedknives are surface ground on the top and front edge and straightened three times before being packaged with oil for rust prevention. All R&R Bedknives now have an increased front edge grind for added life. All R&R Bedknives are guaranteed against defects in material and workmanship under normal use for the life of the part.:*

2	<b>RMT1928</b>	MT1928	Bedknife - 9.5mm (3/8)	1
---	----------------	--------	------------------------	---

All original equipment manufacturers names and part numbers are used for identification purposes only, and we are in no way implying that our products are original equipment parts. Prices subject to change without notice.



# Replaces John Deere 3235 Reel Mower

## Parts

Heavy Cutting Unit  
Reel & Bedknife



Item No	R&R Part No.	OEM Part No.	Description	Qty Req	Order Quantity
---------	--------------	--------------	-------------	---------	----------------

*Detail Description: R&R Bedknives are manufactured from high carbon-boron alloy steel and then hardened to RC46-49 to match the temper of our reel blades and original equipment reels. Bedknives are surface ground on the top and front edge and straightened three times before being packaged with oil for rust prevention. All R&R Bedknives now have an increased front edge grind for added life. All R&R Bedknives are guaranteed against defects in material and workmanship under normal use for the life of the part.:*

2	<b>RMT3983</b>	MT3983	Bedknife - 6.3 mm (1/4)	1	
---	----------------	--------	-------------------------	---	--

*Detail Description: R&R Bedknives are manufactured from high carbon-boron alloy steel and then hardened to RC46-49 to match the temper of our reel blades and original equipment reels. Bedknives are surface ground on the top and front edge and straightened three times before being packaged with oil for rust prevention. All R&R Bedknives now have an increased front edge grind for added life. All R&R Bedknives are guaranteed against defects in material and workmanship under normal use for the life of the part.:*

### R&R Razor Tool Steel Bedknives, Lifetime Guaranteed

2	<b>R130135</b>		Bedknife - Razor Tool Steel - 22 High Cut	1	
---	----------------	--	---	---	--

*Detail Description: R&R Razor bedknives are manufactured from premium alloy tool steel steel and then hardened to RC48-51 to match the temper of our Razor reel blades and original equipment premium series reels. Bedknives are surface ground on the top and front edge and specially packaged for rust prevention. All R&R Bedknives now have an increased front edge grind for added life. All R&R Bedknives are guaranteed against defects in material and workmanship under normal use for the life of the part. You can expect up to double the life over standard bedknives.:*

2	<b>RTC32581</b>	TCU32581	Bedknife - Razor Tool Steel - 1/4 in HOC - Extended	1	
---	-----------------	----------	---	---	--

### Overhaul Kits

5	<b>R100174</b>		Overhaul Kit - Cutting Unit	0	
---	----------------	--	-----------------------------	---	--

*Detail Description: Includes 2 ea.: R254-90 Bearing Cups, RJD8960 Bearing Cones, RMT1115 Seals, RMT1211 Locknuts; 1 ea.: R32120-65 Retaining Ring:*

6	<b>RBM17684</b>	BM17684	Scraper Kit - Solid Roller SET/5	0	
---	-----------------	---------	----------------------------------	---	--

*Detail Description: Includes 20 ea: R03M7221 Bolt, R14M7303 Nut; 5 ea: R34M7010 Pin, R500571 Scraper Bar, RET17629 LH Spring, RET17630 RH Spring, RET17757 Pin, RMT2595 Scraper Blade:*

All original equipment manufacturers names and part numbers are used for identification purposes only, and we are in no way implying that our products are original equipment parts. Prices subject to change without notice.



# Replaces John Deere 3235 Reel Mower Parts

Heavy Cutting Unit  
Reel & Bedknife



Item No	R&R Part No.	OEM Part No.	Description	Qty Req	Order Quantity
---------	--------------	--------------	-------------	---------	----------------

## Other Parts Available

10	RET17753	ET17753	Shield - Rear	1	
12	RMT74	MT74	Bushing - Roller Bkt	4	
13	RMT6595	MT6595	Adjuster - L. Front / R. Rear	2	
13	RET17633	ET17633	Adjuster - L. Front / R. Rear	2	
14	RAMT100	AMT100, ET17632	Adjuster - R. Front / L. Rear	2	
15	RAET11311	AET11311	Clamp - Roller Bkt	4	
16	R03M7194	03M7194	Bolt	4	
17	R14M7296	14M7296	Nut - 10mm x 1.5 Flanged	8	
18	RET17646	ET17646	Stud - Clamp	4	
19	R24H1308	24H1308	Washer	4	
20	R14M7400	14M7400	Locknut - 10mm	4	
21	RH138435	H138435	Screw - Set	2	
22	R14M7152	14M7152	Nut - 10mm x 1.5 Jam	2	
23	RAET11305	AET11305	Frame	1	
24	RMT6517	MT6517	Label - Warning	2	
25	RET17759	ET17759	Pin	1	
26	RR50647	J16931, R50647	Pin - Hair Cotter	2	
28	RMT6338	MT6338	Bolt - Shoulder	2	
29	R302-5	JD7797, JD7842, JD7844	Fitting - Grease	4	

All original equipment manufacturers names and part numbers are used for identification purposes only, and we are in no way implying that our products are original equipment parts. Prices subject to change without notice.



# Replaces John Deere 3235 Reel Mower Parts

*Heavy Cutting Unit  
Reel & Bedknife*



Item No	R&R Part No.	OEM Part No.	Description	Qty Req	Order Quantity
30	<b>R19M8197</b>	19M8197	Bolt - Hx HD	8	
31	<b>RMT761</b>	MT761	Weight	1	
32	<b>RMT1211</b>	MT1211	Locknut - 7/8-14 All Metal	2	
33	<b>RJD8960</b>	JD8960	Tapered Bearing Cone	2	
34	<b>R254-90</b>	JD8239	Tapered Bearing Cup	2	
35	<b>RET17510</b>	ET17510	Spring	1	
36	<b>R32120-65</b>	N51168	Ring - Retaining	1	
37	<b>RAMT683</b>	AMT683	Housing - Bearing w/Zerk and Seal	2	
38	<b>RMT1115</b>	MT1115	Seal - Reel	2	
39	<b>R19M7783</b>	19M7783	Screw - Bed Bar Mount	14	
40	<b>RET16424</b>	ET16424	Washer	6	
41	<b>RET16678</b>	ET16678	Washer - Spring	10	
42	<b>RET16572</b>	ET16572	Nut - Hex	2	
43	<b>RA31867</b>	A31867	Locknut	2	
44	<b>RAET10880</b>	AET10880, AMT2965	Adjuster - Reel	2	
45	<b>RET17361</b>	ET17361	Nut - Flanged Eyebolt	2	
46	<b>RET16897</b>	ET16897	Eyebolt	2	
47	<b>RET16896</b>	ET16896	Bolt - Shoulder	2	
54	<b>RAMT2973</b>	AMT2973	Backing Bar - Bed Knife	1	
55	<b>R19M7573</b>	19M7573	Screw - Bedknife M8-1.25 x 20	9	
56	<b>R14M7396</b>	14M7396	Locknut - Flanged Nyloc	9	

All original equipment manufacturers names and part numbers are used for identification purposes only, and we are in no way implying that our products are original equipment parts. Prices subject to change without notice.



# Replaces John Deere 3235 Reel Mower Parts

*Heavy Cutting Unit  
Reel & Bedknife*



Item No	R&R Part No.	OEM Part No.	Description	Qty Req	Order Quantity
57	<b>R19H1820</b>	19H1820	Cap Screw - 1/2-13 x 3	2	
58	<b>RMT2527</b>	MT2527	Shoe - Skid	2	
59	<b>RTCA12581</b>	TCA12581	Coupling - Reel 11 Tooth	1	
60	<b>RMT2745</b>	MT2745	Snap Ring	1	
61	<b>R500571</b>	MT2369	Bar - Scraper	2	
62	<b>RET17757</b>	ET11757, ET17757	Pin - Scraper	2	
63	<b>R34M7010</b>	34M7010	Pin - Spring	2	
64	<b>RET17629</b>	ET17629	Spring - Torsion LH	2	
65	<b>RET17630</b>	ET17630	Spring - Torsion RH	2	
66	<b>RMT2595</b>	MT2595, MT2895	Scraper Blade - Solid Roller	1	
67	<b>R21M7246</b>	21M7246	Screw	4	
68	<b>R14M7303</b>	14M7303	Nut - 6mm x 1.0 Flanged	10	
69	<b>R03M7251</b>	03M7251	Bolt - Gr. Roller Scraper	10	
70	<b>RMT5158</b>	MT5158	Scraper - Fits J.D. RH End	1	
71	<b>RMT2342</b>	MT2342	Section - Grooved Scraper 3 Tooth	1	
72	<b>RMT2340</b>	MT2340	Scraper - Fits J.D. Center	1	
73	<b>RMT2341</b>	MT2341	Section - Grooved Scraper 4 Tooth	1	
74	<b>RMT5159</b>	MT5159	Scraper - Fits J.D. LH End	1	
75	<b>RM71076</b>	M71076	Bushing	2	

All original equipment manufacturers names and part numbers are used for identification purposes only, and we are in no way implying that our products are original equipment parts. Prices subject to change without notice.



# Replaces John Deere 3235 Reel Mower Parts

*Heavy Cutting Unit  
Reel & Bedknife*



Item No	R&R Part No.	OEM Part No.	Description	Qty Req	Order Quantity
76	<b>RK40014</b>	K40014	Locknut - 1/2-13 All Metal Top Lock	2	
77	<b>RM81551</b>	M81551	Washer - 1.840 OD	2	
78	<b>R500558</b>		Scraper - Grooved Roller	1	
<i>Detail Description: 1 Piece Scraper fits OEM AET11262 &amp; AMT2966 Grooved Roller:</i>					
79	<b>RMT7067</b>	MT7067	Coupling - Splined 9/11 Tooth	1	

All original equipment manufacturers names and part numbers are used for identification purposes only, and we are in no way implying that our products are original equipment parts. Prices subject to change without notice.